



OUR COLLECTION

Autumn/winter directory 2025

N
NEPTUNE

Inspiration for every season
@neptunehomeofficial | neptune.com



CONTENTS

Introduction	3
Your local Neptune store	4
Living	11
Dining	75
Bedroom	123
Bathroom	147
Decorating, colours & fabrics	157
Lighting	177
Accessories	209



A warm welcome

Our directory is home to thousands of timeless designs. It's a collection of everything we do, clearly organised by room and function, with every size and style option easy to identify. A source of inspiration. Your trusty handbook, and a faithful reference point.

We hope this Neptune directory is your next step towards creating a joyful home.

A little bit about us...

We're a British-born and raised interiors and lifestyle brand who design and make pieces for your whole home. From solid timber kitchens to accessories that will complete your room scheme, everything we create is built to last for 100 years and to be enjoyed for generations to come.

We do what we do in our collections and design services, to make your life a little easier, the decorating process more joyful and your home a place you'll always want to be.

It's lovely to meet you.



Bath



Belfast



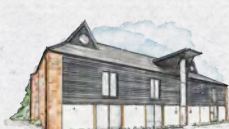
Bristol



Bury St Edmunds



Cambridge



Canterbury



Cheltenham



Chesham

Stores with a difference

From converted mills and pubs to an old tram service depot, we have over 30 unique Neptune stores, and over 40 partner stores, across the UK and Europe.



Chester



Chichester



Chiswick



Colchester



Edgbaston



Farnham



Fulham



Guildford



Hailsham



Hove



Knutsford



Reading



Southport



Tonbridge



Weybridge



Wimbledon



Winchester



York

More like homes than showrooms, each store brings our collections to life, and allows you to imagine our designs in your own home. Whether it's opening our solid timber cabinets, sinking into one of our sofas or feeling the weight of a mouthblown glass in your hands.

Seeing us in person is simply the best way to get to know our designs.

So, while we hope you enjoy flicking through our directory, we look forward to meeting you in person, too. To find your nearest store, simply enter your location at

neptune.com/our-stores



Berlin



Fellbach



Paris



Paris Ouest



Tegernsee



Redbrick



Wiltshire Outlet



Our design services

Our approach to design is about creating timeless interiors that are tailored to you and your home. Whether that's the services we provide or the designs within our furniture collections, Neptune is for every home.

Visit one of our stores and you'll find inspiration all around you or read the latest articles on our online journal and in Stories magazine. If you have a vision and are ready to bring it to life, our design experts are here to help.



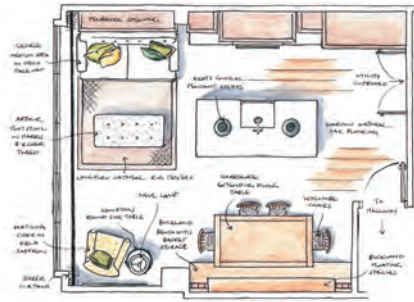


Kitchen design

Your kitchen is likely to be one of the biggest investments you'll make for your home. Our end-to-end Kitchen Design Service alleviates the stress of embarking on a new project, giving you confidence and reassurance throughout the process. Our team of designers, project managers and installers provide dedicated support at every stage of your journey, from the initial free consultation to the detailed design presentation. And with installation from our expert team, you'll also have peace of mind of our lifetime guarantee.

You'll find kitchen designers in each of our stores, to get started simply book a free design consultation online, or visit your local store.

neptune.com/kitchen-design



Design schemes

Our complimentary Home Design Service offers expert, on-the-spot advice to help you create a cohesive room scheme. Whether you need advice on colour palettes, furniture or fabrics, we've developed four signature Neptune design styles to inspire you. Each style guide provides the perfect starting point for our design consultants to help you achieve your desired look.

Visit your local store to meet our team and book a free consultation.

neptune.com/design-schemes



Interior design

Our comprehensive Interior Design Service helps you create the home you have always dreamed of. Whether you're furnishing one room or styling a whole house, our expert designers will work alongside you, providing sketches, renderings and home visits to create a space that embodies Neptune's timeless aesthetic while reflecting your own taste and budget.

This service is available exclusively in our Cambridge, Chester, Colchester, Hailsham, Hove, Southport, Tonbridge, Weybridge and Winchester stores, as well as select Neptune partner locations.

neptune.com/interior-design



LIVING

As we continue to blur the boundaries between different rooms of the home, what we mean by 'living space' is increasingly fluid. It's more important than ever to carve out corners for curling up with a good book or catching up on a new documentary. From stools that can also be coffee tables, to classic sofas and concealed media cabinets, our living collection is for homes that don't want to compromise on beauty or utility.

Sofas & armchairs	14
Occasional armchairs	24
Footstools	30
Ottomans & blanket boxes	34
Occasional tables	36
Storage	46
Bookcases	50
Chawton	52
Pembroke	58
Media cabinets	62
Coat racks & shelves	66
Desks	70
Workstations	72



Made to order

The foundations of every upholstered piece we make are the same: solid timber, tried and tested joinery, and comfortable yet durable fillings. It's the fabric that makes each sofa or footstool feel uniquely beautiful. Our curated collection of wools, linens and velvets allows you to customise our furniture to suit your home.

 You will see this symbol next to all made to order pieces available in a custom fabric.

All our upholstery is available in a standard fabric and leg finish.

Sofas, armchairs (excluding Audley) and footstools

Fabric: Heavyweight Linen Pale Oat or
Signature Linen Calico

Leg finish: Natural Oak

Headboards

Fabric: Linara Natural

Dining chairs

Fabric: Heavyweight Linen Spelt
Leg finish: Natural Oak

You can choose to have many of our upholstered pieces in a custom fabric from our collection. Turn to page 165 to view all our fabrics or visit us online to see which fabric options are suitable for your chosen piece of furniture.

Leg finishes

Once you've chosen your fabric, it's time to think about the leg finish. We offer two oak finishes for our upholstered designs, Natural Oak and Darkened Oak.



Natural
Oak



Darkened
Oak

Upholstery

From classic, upright styles to relaxed loose covered designs, all our upholstered pieces are made using the finest fillings and traditional techniques.



ELIZA

The minimalist aesthetic of Eliza, featuring a tulipwood frame and turned oak legs, focuses on deeper proportions and a comfortable single seat cushion you can curl up on. Also available as a loose cover design for a more relaxed feel.

Design details

- Features:** Made from solid kiln-dried tulipwood with solid oak wood legs.
 Seat cushion has a comfortable feather and fibre wrapped foam core.
 Back and bolster cushions are filled with feather and fibre mix.
 Removable seat cushion.



NEW Armchair

ELI-ARM-[]
 W: 86cm D: 91cm H: 77cm
 Seat height: 50cm

From 1,795 €



Two-seater sofa

ELI-SOF2-[]
 W: 175cm D: 95cm H: 82cm
 Seat height: 50cm

From 3,595 €



Two-seater loose cover sofa

ELI-SOF2-COV-SIG-MO
 W: 175cm D: 95cm H: 82cm
 Seat height: 50cm

4,350 €



Three-seater sofa

ELI-SOF3-[]
 W: 210cm D: 105cm H: 82cm
 Seat height: 50cm

From 4,350 €



Three-seater loose cover sofa

ELI-SOF3-COV-SIG-MO
 W: 210cm D: 105cm H: 82cm
 Seat height: 50cm

5,150 €



Four-seater sofa

ELI-SOF4-[]
 W: 230cm D: 105cm H: 82cm
 Seat height: 50cm

From 4,750 €



Four-seater loose cover sofa

ELI-SOF4-COV-SIG-MO
 W: 230cm D: 105cm H: 82cm
 Seat height: 50cm

5,850 €





LONG ISLAND

Long Island is all about laid-back living with removeable loose linen slip covers and generous proportions.

Design details

Features: Precision-made loose covers.
Removeable cushions.
Serpentine sprung seat.
Available as 100% feather-fill, made to order.

Armchair

LIS-CHA-[]
W: 80cm D: 95cm H: 82cm
Seat height: 49cm
From 2,250 €



Loveseat

LIS-CHA-LOV-[]
W: 118cm D: 104cm H: 82cm
Seat height: 49cm
From 2,895 €



Two-seater sofa

LIS-SOF2-[]
W: 175cm D: 95cm H: 81.5cm
Seat height: 49cm
From 3,995 €



Three-seater sofa

LIS-SOF3-[]
W: 210cm D: 105cm H: 81.5cm
Seat height: 49cm
From 4,895 €



Four-seater sofa

LIS-SOF4-[]
W: 235cm D: 105cm H: 81.5cm
Seat height: 49cm
From 5,295 €



Four-seater modular sofa

Made to order only
LIS-SOF5-[]
W: 310cm D: 105cm H: 81.5cm
Seat height: 49cm
From 6,550 €



Six-seater modular sofa

Made to order only
LIS-SOF6-[]
W: 370cm D: 105cm H: 81.5cm
Seat height: 49cm
From 7,350 €



Five-seater corner sofa

Made to order only
LIS-COR-SET4-[]
W: 260cm D: 260cm H: 81.5cm
Seat height: 49cm
From 9,195 €



Seven-seater corner sofa

Made to order only
LIS-COR-SET5-[]
W: 290cm D: 290cm H: 81.5cm
Seat height: 49cm
From 9,995 €



Four-seater L-shape corner sofa

Made to order only
LIS-COR-SET1L/R-[]
W: 220cm D: 260cm H: 81.5cm
Seat height: 49cm
Left or right configuration
From 7,595 €



Five-seater L-shape corner sofa

Made to order only
LIS-COR-SET2L/R-[]
W: 220cm D: 290cm H: 81.5cm
Seat height: 49cm
Left or right configuration
From 7,995 €



Six-seater L-shape corner sofa

Made to order only
LIS-COR-SET3L/R-[]
W: 260cm D: 290cm H: 81.5cm
Seat height: 49cm
Left or right configuration
From 9,595 €



LOTTIE

A contemporary take on the classic Chesterfield, the Lottie sofa is distinguished by its deep buttoning and high armrests.

Design details

Features: Upholstered by hand.
Serpentine sprung seat.
Tapering oak legs.



Two-seater sofa
LOT-SOF2-[]
W: 175cm D: 90cm H: 80cm
Seat height: 48cm



From 3,450 €



Four-seater sofa
LOT-SOF4-[]
W: 220cm D: 90cm H: 80cm
Seat height: 48cm



From 4,650 €



EVA

Eva's deep seat and downswept armrests give it a sculptural profile, which is highlighted by the traditional studded outline.

Design details

Features: Upholstered by hand.
Removeable cushions.
Serpentine sprung seat.
Studded perimeter.



Two-seater sofa
EVA-SOF2-[]
W: 175cm D: 100cm H: 95cm
Seat height: 50cm



From 3,695 €



Three-seater sofa
EVA-SOF3-[]
W: 205cm D: 100cm H: 95cm
Seat height: 50cm



From 4,495 €



Armchair
EVA-CHA-ARM-[]
W: 84cm D: 100cm H: 95cm
Seat height: 50cm



From 2,395 €



GEORGE

With its pin-tuck tailoring and brass castors, George is stately yet elegant with a reduced depth that will tuck into narrower spaces.

Design details

- Features:**
- Upholstered by hand.
 - Serpentine sprung seat.
 - Turned oak legs with brass castors.
 - Removable seat cushion.



Armchair

GEO-CHA-ARM-[]

W: 87cm D: 92cm H: 83cm

Seat height: 50cm

From 1,850 €



Two-seater sofa

Made to order only

GEO-SOF2-[]

W: 175cm D: 92cm H: 83cm

Seat height: 50cm

From 2,895 €



Three-seater sofa

Made to order only

GEO-SOF3-[]

W: 205cm D: 92cm H: 83cm

Seat height: 50cm

From 3,595 €



Four-seater sofa

Made to order only

GEO-SOF4-[]

W: 235cm D: 92cm H: 83cm

Seat height: 50cm

From 3,995 €





OLIVIA

Olivia is quintessentially English in style, with a sweeping arched backrest and a luxuriously deep seat.

Design details

- Features:**
- Upholstered by hand.
 - Serpentine sprung seat.
 - Turned oak legs with brass castors.
 - Removable seat cushion.

Armchair

OLI-CHA-ARM-[]

W: 86cm D: 105cm H: 88cm

Seat height: 43cm

From 1,995 €



Loveseat

OLI-CHA-LOV-[]

W: 121cm D: 110cm H: 88cm

Seat height: 44cm

From 2,550 €



Two-seater sofa

OLI-SOF2-[]

W: 170cm D: 105cm H: 88cm

Seat height: 43cm

From 3,295 €



Three-seater sofa

OLI-SOF3-[]

W: 202cm D: 105cm H: 88cm

Seat height: 43cm

From 3,995 €



Four-seater sofa

OLI-SOF4-[]

W: 225cm D: 110cm H: 88cm

Seat height: 43cm

From 4,495 €



Five-seater sofa

Made to order only

OLI-SOF5-[]

W: 245cm D: 110cm H: 88cm

Seat height: 43cm

From 5,150 €





SHOREDITCH

The Shoreditch collection ranges from a compact armchair to a generous L-Shape sofa, with the same streamlined, contemporary proportions throughout.

Design details

Features: Upholstered by hand.
Removeable cushions.
Serpentine sprung seat.

Armchair

SHO-CHA-ARM-02-[]

W: 79cm D: 98cm H: 82cm

Seat height: 52cm

From 1,750 €



Two-seater sofa

SHO-SOF2-02-[]

W: 165cm D: 98cm H: 82cm

Seat height: 52cm

From 2,795 €



Three-seater sofa

SHO-SOF3-02-[]

W: 200cm D: 98cm H: 82cm

Seat height: 52cm

From 3,450 €



Four-seater chaise sofa

Made to order only

SHO-COR-SET2L/R-[]

W: 287cm D: 163cm H: 82cm

Seat height: 52cm

From 6,050 €



Four-seater L-shape sofa

Made to order only

SHO-COR-SET3L/R-[]

W: 285cm D: 198cm H: 82cm

Seat height: 52cm

From 7,195 €



Five-seater L-shape sofa

Made to order only

SHO-COR-SET1-02-[]

W: 285cm D: 285cm H: 82cm

Seat height: 52cm

From 8,650 €





Occasional chairs

Spindled profiles, feminine slipper chairs,
and everything in between. Our collection
of occasional chairs offers something for
every room in the home.

CLEO

Built around a strong tulipwood frame, Cleo appears to float atop a hidden metal plinth base allowing a 360° swivel.

Design details

- Finish:** Boucle Ecu as standard
Signature Linen Calico as standard
- Features:** Made from strong kiln-dried tulipwood.
Crafted using traditional halving joints.
Sits on a metal swivel base.



NEW Swivel chair
CEO-SWIV-CHA-[]
W: 76cm D: 85cm H: 82cm
Seat height: 47cm



From 1,595 €



WALTER

Drawing inspiration from mid-century designs, Walter has gently titled back and armrests that create a cocooning shape, perfect for relaxing.

Design details

- Finish:** Signature Linen Moss as standard
Signature Linen Trellis as standard
- Features:** Made from a kiln-dried tulipwood frame.
Seat cushion filled with feather and fibre wrapped foam.
Serpentine sprung seat.



Armchair

WAL-CHA-ARM-[]

W: 73cm D: 85cm H: 85cm

Seat height: 49cm

From 1,350 €

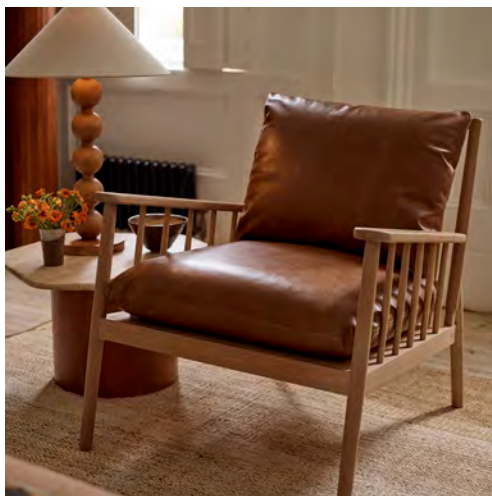


CASEY

Taking cues from Arts & Crafts design principles, Casey has spindled profiles, turned details and cushions that provide all the comfort of an upholstered piece.

Design details

- Features:** Solid oak frame protected with Natural IsoGuard®.
Refined proportions, spindled profiles and turned details.
Seat cushions filled with feather-wrapped foam.



Armchair

CAS-CHA-ARM-[]

W: 75cm D: 80cm H: 77cm

Seat height: 45 cm

From 1,450 €



AUDLEY

Influenced by Mid-century modern Scandinavian design, our Audley chair is a stand-alone piece that is designed as a striking accent chair for any room.

Design details

Finish: Natural Oak and Signature Linen Moss cushions as standard

Features: Traditionally crafted using tenon joints.
Comes with upholstered foam-feather filled seat pad.



Armchair

AUL-CHA-ARM-CUS-[]

W: 70cm D: 76cm H: 69cm

Seat height: 37cm

From 1,450 €



AUDREY

Audrey's petite stature and feminine curves bring soft seating to smaller spaces, while the studded border adds traditional detail to this otherwise pared-back chair.

Design details

Features: Upholstered by hand.
Serpentine sprung seat.
Turned oak legs.
Studded perimeter.



Armchair

AUD-CHA-[]

W: 74cm D: 90cm H: 75cm

Seat height: 42.5cm

From 1,350 €



MADELEINE

Madeleine is a classic slipper chair, with a deeply scrolled backrest and no arms. Perfect for bringing luxurious seating to a bedroom or bathroom.

Design details

- Features:
- Upholstered by hand.
 - Serpentine sprung seat.
 - Turned oak legs with brass castors.



Armchair
MAD-CHA-ARM-[]
W: 55cm D: 69cm H: 73cm
Seat height: 40cm
From 595 €



MATILDA

Compact yet supremely comfortable, Matilda's outswept armrests and deep seat make it a cosy armchair for smaller spaces.

Design details

- Features:
- Upholstered by hand.
 - Seat cushion filled with feather-wrapped foam.
 - Serpentine sprung seat.



Armchair
MAT-CHA-ARM-[]
W: 81cm D: 80cm H: 83cm
Seat height: 44cm
From 1,350 €





The Matilda armchair is also available in Fermoie Flag (from 1,950 €).

See page 169 for more details.

THEO

Theo's deep seat and sloping armrests reference classic British upholstery, with solid oak legs resting over brass castors.

Design details

- Features:**
- Upholstered by hand.
 - Seat cushion filled with feather-wrapped foam.
 - Serpentine sprung seat.



Armchair

THO-CHA-ARM-[]

W: 66cm D: 81cm H: 90cm

Seat height: 41cm

From 1,195 €



WYCOMBE

This timber armchair offers welcome contrast to upholstery, with an oak frame and woven rush seat that reflect Arts & Crafts design principles.

Design details

- Finish:** Natural Oak
- Features:**
- Traditional mortise-and-tenon joinery.
 - Rush seat with water-resistant wax coating.



WYC-CHA-ARM-IN

W: 66cm D: 74cm H: 75cm

Seat height: 41cm

995 €



Footstools & ottomans

Busy homes call for footstools that work as coffee tables, and storage boxes that double as window seats.



OPHELIA

Marrying form and function, the Ophelia footstool hides two solid oak trays beneath its elegant, cushioned frame.

Design details

- Features:**
- Solid oak frame protected with Natural IsoGuard®.
 - Two oak trays concealed under stool as drawers.
 - Cushion is foam and feather filled for support.



NEW Footstool, small

OPH-STO-SML-[]

W: 116cm L: 70cm H: 42cm

From 1,395 €



The Ophelia footstools are also available in Fermoie Flag (from 1,750 €).

See page 169 for more details.

Footstool, large

OPH-STO-LRG-[]

W: 116cm L: 96cm H: 42cm

From 1,950 €



RUPERT

Rupert blends classic influences with contemporary style. Its tall, slender proportions are well-suited to the end of the bed or beneath a window.

Design details

- Features:**
- Upholstered by hand.
 - Cushion is foam-filled for support.
 - Tapering solid oak legs.



Footstool

RUP-STO-[]

W: 38cm L: 125cm H: 45cm

From 525 €



ARTHUR

Arthur is a traditional low ottoman, with a buttoned top supported over turned legs and brass castors.

Design details

- Features:
- Upholstered by hand.
 - Cushion is foam-filled for support.
 - Solid oak legs on metal castors.



Footstool, medium
ART-STO-[]
W: 55cm L: 120cm H: 40cm
From 795 €



Footstool, large
ART-STO-80-[]
W: 80cm L: 120cm H: 40cm
From 925 €



LONG ISLAND

Inspired by the laid-back Belgian chic look, the Long Island footstool features a removable loose linen slipcover, flowing skirt and corner kick pleats.

Design details

- Features:
- Upholstered by hand.
 - Foam-filled for support.
 - Removeable loose cover.



Footstool
LIS-MOD-STO-[]
W: 73cm L: 90cm H: 53cm
From 1,350 €



MILO

Milo's round shape and fabric cover soften a room, while its flat surface and robust structure allow you to use it as a stool, coffee or side table.

Design details

- Features:**
- Upholstered by hand.
 - Foam-filled for support.
 - Removeable cover.



Footstool
MLO-STO-[]
Dia: 38cm H: 45cm
From 330 €



Footstool
MLO-STO3-[]
Dia: 70cm H: 40cm
From 575 €



ALEX

Alex is a contemporary take on classical silhouettes, with a deep cushion supported over a solid oak cross-frame base.

Design details

- Features:**
- Upholstered by hand.
 - Cushion is foam-filled for support.
 - Made with traditional halving joints.



Footstool
ALE-STO-[]
W: 42cm L: 72cm H: 46cm
From 430 €





ELOISE

For a pared-back, elegant storage box that will sit neatly beneath a window or at the foot of the bed, look no further than Eloise.

Design details

- Finish: Linara Natural as standard
- Features: Upholstered by hand.
Soft-close lid.
Timber frame with foam filling.
Cotton lined.

Ottoman
ELO-OTT-[]
W: 45cm D: 125cm H: 45cm
From 925 €



HENLEY

This solid oak storage box features traditional mouldings and carved skirting, with a spacious interior for keeping essentials out of sight.

Design details

Finish: Classic Oak

Features: Traditional mortise-and-tenon joinery.
Soft-close lid stays open at any angle.
Timber protected with IsoGuard®.



Wide storage box
HEN-BLA-BOX-120
W: 120cm D: 39cm H: 45cm
1,350 €



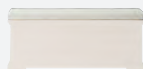
Henley storage box cushion

Finish: Linara Natural as standard

Features: Foam-filled for comfortable support.
Comes with a non-slip mat.



Cushion
HEN-BOX-CUS-120-[]
L: 120cm D: 39cm H: 5cm
From 320 €





Occasional tables

Coffee, console and side tables are the unsung heroes of our living spaces. They ensure there's always somewhere to rest your mug, display a favourite lamp, or store a magazine collection.

FROME

Frome is a contemporary take on classic regency designs, with slim proportions, rounded corners and a beautifully woven undershelf. Choose between two finishes.

Design details

Finish: Natural Oak
Warm Black

Features: Made from strong solid oak.
Woven honey-coloured undershelf.



Frome is also available as a versatile freestanding cabinet, see page 47.

Side table
Natural Oak
FRO-TAB-LAM-IN
W: 55cm D: 42cm H: 62cm
925 €



Side table
Warm Black
FRO-TAB-LAM-WBO
W: 55cm D: 42cm H: 62cm
925 €



Coffee table
Natural Oak
FRO-TAB-COF-120-IN
W: 120cm D: 70cm H: 40cm
1,350 €



Coffee table
Warm Black
FRO-TAB-COF-120
L: 120cm D: 70cm H: 40cm
1,350 €



Console table
Natural Oak
FRO-CON-150-IN
W: 150cm D: 46cm H: 73cm
1,850 €



Console table
Warm Black
FRO-CON-150-WBO
W: 150cm D: 46cm H: 73cm
1,850 €





CHALFORD

Crafted from solid oak using traditional turning techniques, Chalford pairs Edwardian inspiration with modern detailing.

Design details

- Finish: Natural Oak
Darkened Oak
- Features: Made from solid oak.
Crafted using traditional turning techniques.
Timber protected with IsoGuard®.



NEW Side table
Natural Oak
CHAL-TAB-SID-0450-IN
Dia: 45cm H: 57cm
295 €



NEW Side table
Darkened Oak
CHAL-TAB-SID-0450-DO
Dia: 45cm H: 57cm
295 €



THORNBURY

A recessed top, three-legged base and sculptural turned detail give this traditional pedestal table a contemporary feel.

Design details

- Finish: Natural Oak
Darkened Oak
- Features: Made from solid oak.
Crafted using traditional mortise and tenon joinery.
Timber protected with IsoGuard®.



NEW Side table
Natural Oak
THY-TAB-SID-0450-IN
Dia: 45cm H: 57cm
260 €



NEW Side table
Darkened Oak
THY-TAB-SID-0450-DO
Dia: 45cm H: 57cm
260 €



EDINBURGH

These tables feature turned column supports and tongue-and-groove undershelves. Choose Edinburgh where your home needs the warmth and texture of solid oak.

Design details

Finish: Vintage Oak

Features: Oak is brushed to highlight the grain.
Timber protected with IsoGuard®.



Square side table

EDIL-TAB-LAM-042

W: 42cm D: 42cm H: 50cm

525 €



Rectangular side table

EDIL-TAB-LAM-070

W: 70cm D: 30cm H: 50cm

595 €



Small coffee table

EDIL-TAB-COF-110

L: 110cm D: 70cm H: 43cm

1,295 €



Large coffee table

EDIL-TAB-COF-180

L: 180cm D: 70cm H: 43cm

1,850 €



Square coffee table

EDIL-TAB-COF-SQU-110

L: 110cm D: 110cm H: 43cm

1,750 €



Small console table

EDIL-CON-122

W: 122cm D: 36cm H: 73cm

1,050 €



Large console table

EDIL-CON-168

W: 168cm D: 45cm H: 84cm

2,350 €



HENLEY

Strong solid oak, elegant turned legs, and subtle under-tabletop mouldings. Our Henley occasional tables are as classic as it gets.

Design details

Finish: Classic Oak

Features: Traditional mortise-and-tenon joinery.
Timber protected with IsoGuard®.



Round side table
HENL-TAB-SID-060
Dia: 60cm H: 60cm
575 €



Rectangular side table
HENL-TAB-LAM-065
W: 65cm D: 47cm H: 50cm
525 €



Large coffee table
HENL-TAB-COF-160
L: 160cm D: 90cm H: 40cm
1,650 €



Small coffee table
HENL-TAB-COF-120
L: 120cm D: 65cm H: 40cm
1,150 €



Console table
HEND-CON-005
W: 130cm D: 38cm H: 77cm
1,795 €



WYCOMBE

Wycombe's pared-back profile and small footprint suit the most compact living spaces, while its oak frame and woven shelf reference Arts & Crafts design.

Design details

- Finish: Natural Oak
- Features: Made from strong solid oak.
Timber protected with IsoGuard®.
Woven shelf with a water-resistant wax finish.



Coffee table
WYC-TAB-COF-120
L: 120cm D: 70cm H: 42cm
1,150 €



ARUNDEL

Made from solid oak with a simple architectural construction, this console table celebrates natural materials and quality craftsmanship.

Design details

- Finish: Natural Oak
- Features: Oak is brushed to highlight the grain.
Timber protected with IsoGuard®.



Medium console table
ARUL-CON-120
W: 120cm D: 40cm H: 75cm
1,050 €



Large console table
ARUL-CON-170
W: 170cm D: 45cm H: 82cm
1,350 €



ALDWYCH

Aldwych is a versatile collection that complements any setting, with simple Shaker-inspired proportions and a unique tray-like tabletop.

Design details

Finish: Snow

Features: Traditional mortise-and-tenon joinery.

Tall side table

ALD-TAB-LAM-052-SN

W: 52cm D: 42cm H: 65cm

695 €



Rectangular side table

ALD-TAB-LMP-REC-056-SN

W: 56cm D: 28cm H: 53cm

465 €



Small console table

ALD-CON-082-SN

W: 82cm D: 33cm H: 72cm

925 €



Large console table

ALD-CON-122-SN

W: 122cm D: 38cm H: 80cm

1,350 €



CHICHESTER

Georgian-inspired Chichester brings relaxed country style to the home. It's console table has a solid oak tabletop and a tongue-and-groove undershelf.

Design details

Finish: Shingle with Natural Oak

Features: Traditional mortise-and-tenon joinery.

Oak protected with IsoGuard®.



Console table

CHI-CON-HG

W: 122cm D: 40cm H: 76cm

1,595 €



CONISTON

Streamlined Coniston may look pared-back from afar, but a closer look reveals delicate ring-turnings to the legs and gently tapering feet.

Design details

- Finish:** Black Bronze & glass
Features: Made from powder-coated steel.
Tempered glass shelves.

Tall side table
CONI-TAB-TALL-SID-0430
Dia: 43cm H: 58cm
795 €



Low round coffee table
CONI-TAB-COF-0755
Dia: 76cm H: 46cm
1,350 €



Rectangular coffee table
CONI-TAB-COF-1400
L: 140cm D: 70cm H: 45cm
1,850 €



Drinks trolley
CONI-DRI-TRO
W: 69cm D: 35cm H: 80cm
1,350 €



Console table
CONI-TAB-CON-1200
W: 120cm D: 40cm H: 70cm
1,750 €



KESWICK

The Keswick occasional tables nod to refined Art Deco glamour, each with an angular metal frame and a gleaming brass finish.

Design details

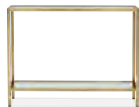
- Finish:** Brushed Brass & glass
Features: Made from strong steel.
Tempered glass shelves.



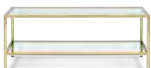
Rectangular side table
KES-TAB-REC-SID-0530
W: 53cm D: 27cm H: 54cm
750 €



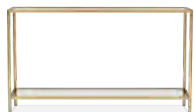
Medium console table
KES-TAB-CON-1000
W: 100cm D: 35cm H: 75cm
1,550 €



Coffee table
KES-TAB-COF-1200
L: 120cm D: 60cm H: 45cm
1,450 €



Large console table
KES-TAB-CON-1400
W: 140cm D: 40cm H: 80cm
2,050 €





Storage

Glass-fronted cabinets, traditional wooden dressers, and customisable cabinetry are the unsung heroes of our living spaces. They provide the perfect places to display favourite glassware, accessories, and books, or to simply tuck away objects in drawers.



FROME

Frome's contemporary take on classic regency design and adjustable shelving make it a versatile storage solution from living room to bedroom.

Design details

- Finish:** Natural Oak
Warm Black Oak
- Features:** Made from strong solid oak.
Adjustable shelves.
Woven honey-coloured undershelf.



Cabinet

Warm Black Oak
FRO-CAB-WBO
W: 105cm D: 45cm H: 170cm
3,295 €



Cabinet

Natural Oak
FRO-CAB-IN
W: 105cm D: 45cm H: 170cm
3,295 €



Frome is also available as a collection of occasional tables, see page 37.

PORTOBELLO

Portobello's timeless design makes it incredibly versatile; use it as a bathroom cabinet or in a sitting room with treasured collectibles inside.

Design details

- Finish:** Driftwood exterior
Silver Birch interior
- Features:** Adjustable shelves.
Single drawer on soft-close runners.



Glazed cabinet
PORT-CAB-LH/RH-DR-SI
W: 55cm D: 40cm H: 162cm
Available in left or right configuration.

1,850 €







HENLEY

Stately Henley harnesses the natural beauty and strength of solid oak. With deep adjustable shelves, it's cabinetry to cherish for a lifetime.

Design details

Finish: Classic Oak

Features: Adjustable shelves.

Timber protected with IsoGuard®.

4ft bookcase

HEND-WIN-019

W: 122cm D: 38cm H: 87cm

2,195 €



CHICHESTER

Whether you prefer your books on display or behind closed doors, Chichester offers traditional, Georgian-style storage for any room size.

Design details

Finish: Shingle exterior

Shell interior with Natural Oak

Features: Adjustable zig-zag shelving.

Tongue-and-groove back panel.

Oak protected with IsoGuard®.



3ft open bookcase base

CHI-BOO-OPN-3FT-HG

W: 80cm D: 36cm H: 87cm

1,250 €



Full height bookcase

CHI-BOO-FUL-HG

W: 111cm D: 43cm H: 209cm

2,850 €



3ft original bookcase

CHI-BOO-STD-HG

W: 103cm D: 49cm H: 209cm

3,345 €



6ft grand bookcase

CHI-BOO-GND-HG

W: 193cm D: 49cm H: 209cm

5,845 €



3ft original bookcase base

CHI-BOO-STD-B-HG

W: 94cm D: 49cm H: 75cm

1,595 €



6ft grand bookcase base

CHI-BOO-GND-B-HG

W: 183cm D: 49cm H: 75cm

2,850 €





CHAWTON

Modular components designed to bring your dream run of cabinetry to life. Start with smart sideboards and finish with wine racks and ladders.

Design details

Finish: Snow with Vintage Oak

Features: Sliding doors.

Soft-close drawers.

Adjustable shelves.

Timber protected with IsoGuard®.

Sideboards

Open sideboard/bookshelf

CHW-SID-OPN-SNG-SN

W: 90cm D: 46cm H: 74cm

1,530 €



Tall sideboard

CHW-SID-DRW-SNG-SN

W: 90cm D: 46cm H: 91cm

2,455 €



Sideboard with drawers

CHW-SID-3FT-6DRW-SN

W: 90cm D: 46cm H: 74cm

2,730 €



Double open sideboard/bookshelf

CHW-SID-OPN-DBL-SN

W: 180cm D: 46cm H: 74cm

3,060 €



Tall double sideboard

CHW-OPN-DBL-CAB

W: 180cm D: 46cm H: 91cm

4,885 €



Double sideboard with drawers

CHW-SIDB-DBL-SN-01

W: 180cm D: 46cm H: 74cm

4,590 €

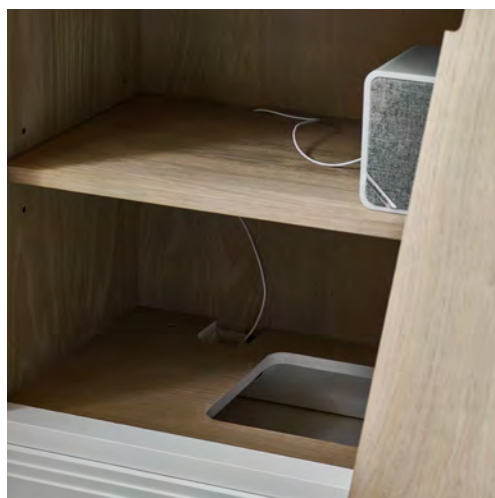


Double cabinet with drawers

CHW-DBL-CAB

W: 180cm D: 46cm H: 91cm

6,440 €



Dressers & TV cabinets

Open low single dresser
CHW-LOW-OPN-DRS-SN
W: 90cm D: 46cm H: 144cm
3,315 €



Open single dresser
CHW-CLA-LOW-SING-SN
W: 90cm D: 46cm H: 185cm
3,815 €



Contemporary dresser
CHW-CON-DBL-SN
W: 180cm D: 46cm H: 223cm
10,465 €



Low triple dresser
CHW-CLA-LOW-TRI-SN
W: 270cm D: 46cm H: 185cm
12,890 €



Low double dresser
CHW-CLA-LOW-DBL-SN
W: 180cm D: 46cm H: 185cm
8,775 €



Tall double dresser
CHW-CLA-TALL-DBL-SN
W: 180cm D: 46cm H: 261cm
11,520 €



Classic tall triple dresser
CHW-CLA-TRI-SID-DRW-SN
W: 270cm D: 46cm H: 202cm
15,665 €



Tall triple dresser with ladder
CHW-CLA-TALL-TRI-SN
W: 270cm D: 46cm H: 261cm
17,130 €



TV cabinet with open base
CHW-105-TV-OPN-SN
W: 180cm D: 46cm H: 184cm
6,170 €



TV cabinet with storage
CHW-105-TV-TRI-OPN-SN
W: 360cm D: 46cm H: 185cm
14,400 €





Cabinets

A Single-height cabinet – open
CHW-TOP-38-OP-SN
W: 90cm D: 46cm H: 38cm
925 €

B Single-height cabinet – glazed
CHW-TOP-38-GLS-SN
W: 90cm D: 46cm H: 38cm
1,195 €

C Double-height cabinet – open
CHW-TOP-71-OP-SN
W: 90cm D: 46cm H: 72cm
1,250 €

D Double-height cabinet – glazed
CHW-TOP-71-GLS-SN
W: 90cm D: 46cm H: 72cm
1,495 €

E TV top cabinet
CHW-TOP-TV-CAB-SN
W: 180cm D: 46cm H: 105cm
2,750 €

F Triple-height cabinet – open
CHW-TOP-105-OP-SN
W: 90cm D: 46cm H: 105cm
1,750 €

G Triple-height cabinet – glazed
CHW-TOP-105-GLS-SN
W: 90cm D: 46cm H: 105cm
2,050 €

H Sideboard drawer
CHW-SID-BRD-DRW-90-SN
W: 90cm D: 48cm H: 17cm
925 €

I Base cabinet – drawers
CHW-BAS-90-6DRW-SN
W: 90cm D: 50cm H: 72cm
2,595 €

J Base cabinet – open
CHW-BAS-90-OPN-SN
W: 90cm D: 50cm H: 72cm
1,395 €

K Base cabinet – sliding doors
CHW-BAS-90-2DR-SN
W: 90cm D: 50cm H: 72cm
1,750 €

L Base cabinet – glazed
CHW-BAS-90-2DR-GLS-SN
W: 90cm D: 50cm H: 72cm
1,895 €

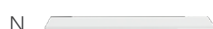
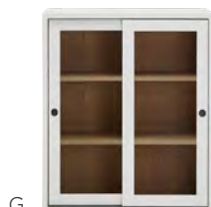
Additions

M Cornice
CHW-COR-90-SN
W: 90cm D: 39cm H: 6cm
180 €

N Dresser top
CHW-DRE-90-TOP-SN
W: 90cm D: 50cm H: 2cm
135 €

O Double sideboard top
CHW-SID-180-TOP-SN
W: 180cm D: 50cm H: 2cm
245 €

P Sideboard top
CHW-SID-90-TOP-SN
W: 90cm D: 50cm H: 2cm
135 €





PEMBROKE

Pembroke is our modular shelving system, designed to bring clever fitted storage to anywhere from kitchen to home office.

Design details

- Finish:** Shingle exterior, Shell interior
Driftwood exterior, Silver Birch interior
- Features:** Soft-close drawers.
Adjustable zig-zag shelving.
Tongue-and-groove end panels.
Oak protected with IsoGuard®.



1450 fitted storage

PEM-STO-1450

W: 1580mm D: 337mm H: 2220mm

4,895 €



2450 fitted storage

PEM-STO-2450

W: 2580mm D: 337mm H: 2220mm

7,550 €



2450 fitted storage

PEM-STO-2450-6DRW-02

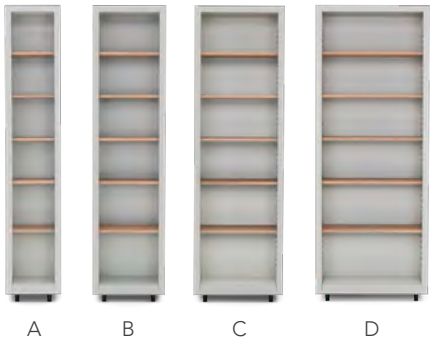
W: 2580mm D: 337mm H: 2220mm

10,450 €



Cabinets

A	400mm PEM-BOO-FIT-400-DR/HG W: 400mm D: 333mm H: 2170mm 1,350 €
B	525mm PEM-BOO-FIT-525-DR/HG W: 525mm D: 333mm H: 2170mm 1,495 €
C	650mm PEM-BOO-FIT-650-DR/HG W: 650mm D: 333mm H: 2170mm 1,695 €
D	825mm PEM-BOO-FIT-825-DR/HG W: 825mm D: 333mm H: 2170mm 2,050 €
End panel PEM-BOO-EP-DR/HG W: 12mm D: 360mm H: 2170mm 155 €	
Cornice PEM-COR-270-DR/HG W: 2700mm D: 60mm 160 €	
Skirting PEM-SKT-270-DR/HG W: 2700mm D: 20mm 130 €	



Spare shelves

400mm (2pc) PEM-SHE-400-2PC W: 342mm D: 296mm H: 20mm 135 €
525mm (2pc) PEM-SHE-525-2PC W: 467mm D: 296mm H: 20mm 165 €
650mm (2pc) PEM-SHE-650-2PC W: 592mm D: 296mm H: 20mm 195 €
825mm (2pc) PEM-SHE-825-2PC W: 767mm D: 296mm H: 20mm 245 €

Drawers

650 base shelf PEM-BAS-SHE-650-HG-02 W: 550mm D: 310mm H: 40mm 130 €
650mm drawer cabinet PEM-DRW-650-HG-02 W: 550mm D: 220mm H: 240mm 350 €
825mm base shelf PEM-BAS-SHE-825-HG-02 W: 720mm D: 310mm H: 40mm 105 €
825mm drawer cabinet PEM-DRW-825-HG-02 W: 720mm D: 220mm H: 260mm 385 €



Your local store can help you design the right Pembroke configuration for you. They will also be able to arrange for professional installation. Because of the configurable nature of this collection, it is only available to view, not purchase, online.

If your configuration includes drawers, you can choose a handle design and finish in store. There's also the option to add a pair of our wall lights for subtle shelf lighting. Skirting and corning are fitted during installation.

neptune.com/our-stores

Media cabinets

Our media cabinets and TV mirrors allow you to have screens close at hand but out of sight.



HENLEY

The Henley TV cabinets share the same traditional features as the rest of the collection, just with the addition of subtle cable management and ventilation features.

Design details

- Finish:** Smoke with Classic Oak exterior
Mist interior
- Features:** Adjustable zig-zag shelving.
Timber protected with IsoGuard®.



3ft6 corner TV cabinet
HEND-AV-3FT6-COR
W: 103cm D: 45cm H: 75cm
Max. TV size: 42"
2,050 €



4ft corner TV cabinet
HEND-AV-4FT-COR
W: 122cm D: 51cm H: 75cm
Max. TV size: 50"
2,595 €



5ft TV cabinet
HEND-AV-5FT-CAB
W: 153cm D: 49cm H: 75cm
Max. TV cabinet: 60"
3,295 €



5ft TV dresser
HEND-AV-5FT-DRE
W: 162cm D: 49cm H: 209cm
Max. TV size: 55"
6,590 €



LYNTON

Lynton can house a large television within its painted timber frame, yet when it's turned off it looks just like a mirror.

Design details

Finish: Snow

Features: Straps secure the screen in place.



43" TV mirror

LYN-MIR-03-SN

W: 110cm H: 69cm D: 9cm

Max TV size:

W 96.4cm H 56.7cm D 5.7cm

1,050 €



55" TV mirror

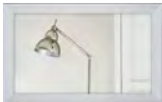
LYN-MIR-04-SN

W: 136cm H: 84cm D: 9cm

Max TV size:

W 124.2cm H 71.9cm D 6cm

1,595 €

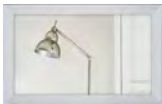


55" TV mirror with articulating wall mount

LYN-MIR-04-SN-K

W: 136cm H: 84cm D: 9cm

3,265 €



AV wall mount

AV-TV-MNT-SML

W: 42cm H: 7cm D: 7 – 47cm

130 €



View our collection of Chawton
fitted storage, including media
cabinets, on page 54.





Coat racks & shelves

Somewhere to retire your coat at the end of the day, put away dog leads after a long walk, or hang the washing while it waits to be ironed.

CHICHESTER

With a flat upper surface, hanging rail and pegs, Chichester offers three storage options in one traditional shelf.

Design details

Finish: Shell with Natural Oak

Features: French cleat fixing supplied.
Oak protected with IsoGuard®.

Five peg laundry shelf
CHIK-LAU-SHELF-960
W: 96cm D: 26cm H: 27cm
490 €



Seven peg laundry shelf
CHIK-LAU-SHELF-1300
W: 130cm D: 26cm H: 27cm
650 €



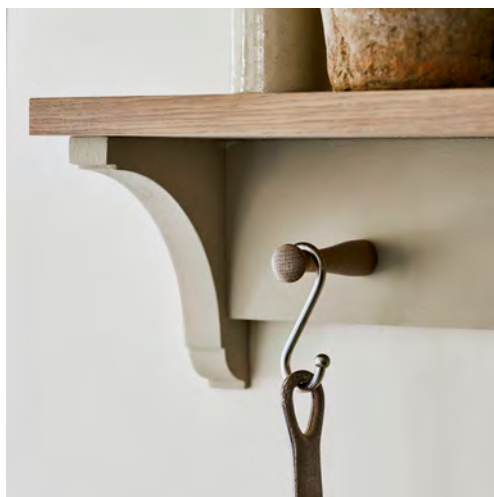
SUFFOLK

An oak shelf and pegs set within a simple painted timber frame. A must-have feature anywhere from kitchen to laundry room.

Design details

Finish: Silver Birch with Seasoned Oak

Features: Keyhole fixings supplied.
Oak protected with IsoGuard®.



3ft coat rack
SUF-SHE-3FT-SI
W: 83cm D: 16cm H: 15cm
295 €



4ft coat rack
SUF-SHE-4FT-SI
W: 122cm D: 16cm H: 15cm
350 €




BUCKLAND

This floating shelf will look like it's been there forever, allowing whatever you choose to display on it to have full attention.


Design details

- Finish: Salt
Natural Oak
- Features: Mounting brackets supplied.
Oak shelf protected with IsoGuard®.

Buckland is also available as a print ledge.
See page 272.



Floating shelf, Salt
BUC-SHE-2200-ST
W: 220cm D: 25cm H: 4cm
465 €



Floating shelf, Natural Oak
BUC-SHE-2200
W: 220cm D: 25cm H: 4cm
795 €

EDINBURGH


The Edinburgh coat rack is made from oak, with bronze double hooks which make it easy to hang anything from coats to bags.

Design details

- Finish: Vintage Oak
- Features: Keyhole fixings supplied.
Oak is brushed to highlight the grain.
Timber protected with IsoGuard®.




3ft coat rack
EDIL-COA-0900-VO
W: 90cm D: 3cm H: 9cm



165 €

4ft coat rack
EDIL-COA-1200-VO
W: 120cm D: 3cm H: 9cm



195 €



WARDLEY

Wardley's clean-lined shape and tapering oak pegs pay homage to the Shaker principles of beauty and utility.

Design details

Finish: Natural Oak

Features: Keyhole fixings supplied.
Oak protected with IsoGuard®.

3ft coat rack
WARD-COA-830
W: 83cm D: 3cm H: 13cm
175 €



4ft coat rack
WARD-COA-1220
W: 122cm D: 3cm H: 13cm
210 €



Home Office

Dedicated home office one day
and craft studio the next. From
last-minute meetings to writing
an epic novel. Our desks and
workstations cater to
ever-evolving lives.



ARDINGLY

Ardingly's slender proportions cater to compact spaces, with a folding design that takes it from console table to desk in a few swift movements.

Design details

- Finish:** Lily with Natural Oak
- Features:** Pull-out oak work surface.
Discreet cable management.
Timber finished with IsoGuard®.



Desk
ARD-DES-LI
W: 90cm D: 48cm H: 87cm
1,395 €



HEBDEN

Our take on a traditional trestle table, with A-frame supports and a simple tabletop. Ideal for using as a desk in a home office or studio.

Design details

- Finish:** Chalked Oak
- Features:** Traditional mortise-and-tenon joinery.
Timber protected with IsoGuard®.



Desk
HEBD-TAB-150-IC-IC
L: 150cm W: 80cm H: 74cm
1,825 €



CHICHESTER

A compact home office within a beautiful, Georgian-style dresser. Chichester considers every detail, from the pull-out work surface to the lockable drawer.

Design details

- Finish:** Shingle with Natural Oak exterior
Shell interior
- Features:** Adjustable shelves.
Cable management features.
Lockable drawer and filing drawer.
Timber protected with IsoGuard®.



4ft workstation
CHI-WKS-4FT-HG
W: 131cm D: 53cm H: 208cm
6,045 €



4ft workstation base
CHI-WKS-4FT-BASE-HG
W: 122cm D: 53cm H: 87cm
3,395 €



With a simple, Georgian-style design, the Chichester writing desk will happily double as a console table when not in use.

Design details

- Finish:** Shell with Natural Oak
- Features:** Single drawer.
Timber protected with IsoGuard®.

Writing desk
CHI-DRS-HE
W: 115cm D: 45cm H: 76cm
1,195 €



LARSSON

Larsson's pretty, Gustavian-inspired design means this writing desk won't look out of place in a bedroom or sitting room.

Design details

- Finish:** Antique Salt
- Features:** Raised upstand.
Single drawer.



Writing desk
LAR-DRS-SL
W: 120cm D: 53cm H: 79cm
975 €





DINING

Whether yours is part of an open plan kitchen or a separate room entirely, take the time to create a truly inviting dining space. All our designs are crafted using the very best materials and tried-and-tested joinery, so you can count on them for decades to come. Once you have chosen a table and chairs, look to freestanding pieces like dressers and chopping blocks to complete the space.

Tables	76
Dining chairs & bar stools	88
Upholstered dining chairs	96
Storage	104
Kitchen freestanding	116



Tables

Dining tables bear witness to family dinners, working from home, arts and crafts and everything in between. That's why we make ours from solid timber using time-honoured joinery techniques.

BATTERSEA

Influenced by iconic 20th Century British architectural design, the Battersea dining table celebrates quality craftsmanship with simple, classic lines and pillar details.

Design details

Finish: Natural Oak

Features: Made from solid oak.

Crafted using traditional mortise and tenon joints.

Timber protected with IsoGuard®.

NEW Six-seater round table

Natural Oak

BATT-TAB-RND-150-IN

Dia: 150cm H: 75cm

2,250 €



NEW Eight-seater rectangular table

Natural Oak

BATT-TAB-245-IN

L: 245cm W: 100cm H: 75cm

2,850 €



Pair with our Tilbury dining chair, page 89, or Shoreditch carver chairs, see page 97.

ARUNDEL

Crafted from oak, Arundel is an immensely strong dining table. Its striking architectural design doesn't compromise on style, either.

Design details

- Finish:** Natural Oak
- Features:** Reinforced mortise-and-tenon joints.
Oak is brushed to highlight the grain.
- Extending:** Opens on solid timber rails.
Spring-loaded latches secure the tabletop and leaves.
Store the leaves in the pouch provided when not in use.



Four-seater round table
ARUD-TAB-RND-120-IN-01
Dia: 120cm H: 74cm
2,150 €



Six-seater round table
ARUD-TAB-RND-150-IN-01
Dia: 150cm H: 74cm
3,195 €



Six-seater table
ARUD-TAB-184
L: 184cm W: 90cm H: 74cm
2,250 €



Eight-seater table
ARUD-TAB-245
L: 245cm W: 100cm H: 74cm
3,050 €



Ten-seater table
ARUD-TAB-305
L: 305cm W: 100cm H: 74cm
3,850 €



6-10 seater extending table
ARUD-TAB-184-EXT
L: 184 – 274cm W: 95cm H: 74cm
3,850 €



Pair with our Wardley dining chairs, page 90 or Arundel bench seating, page 99.



BOROUGH

A masterful blend of Mid-century Scandinavian design and distinctive British flair, Borough offers both elegance and practicality.

Design details

- Finish: Natural Oak
- Features: Made from strong solid oak.
Specialist joinery for strength and longevity.
Timber protected with IsoGuard®.



NEW Six-seater rectangular table
Natural Oak
BTN-TAB-180-IN
L: 180cm W: 85cm H: 75cm
1,750 €



NEW Eight-seater rectangular table
Natural Oak
BTN-TAB-230-IN
L: 230cm W: 95cm H: 75cm
2,150 €



Pair with our Borough dining chairs, see page 89.

STRATFORD

The Stratford round and elliptical dining tables celebrate the sculptural beauty of solid oak, with unique castellated bases and profiled tabletops.

Design details

Finish: Natural Oak

Features: Made from strong solid oak.
Specialist joinery for strength and longevity.
Protected with IsoGuard®.



Six-seater elliptical table
Natural Oak
STRAT-TAB-ELLI-210-IN
L: 190cm W: 120cm H: 73cm
3,250 €



Four-seater round table
Natural Oak
STRAT-TAB-RND-120-IN
Dia: 120cm H: 73cm
2,650 €



Six-seater round table
Natural Oak
STRAT-TAB-RND-150-IN
Dia: 150cm H: 73cm
3,695 €



Pair with our
Kenilworth, Wycombe
or Shoreditch dining
chairs, see page 88.



WYCOMBE

A contemporary update on Arts & Crafts style, the oak Wycombe dining tables come in round, rectangular, and extending designs.

Design details

Finish: Natural Oak

Features: Traditional mortise-and-tenon joinery.
Height-adjustable feet for levelling.
Timber protected with IsoGuard®.

Extending: Extends on two rack-and-pinions.
Legs move out with the tabletop.
Leaves stored within table.

Four-seater round table

WYC-TAB-110-IN

Dia: 110cm H: 74cm

1,350 €



Six-seater table

WYC-TAB-150-IN

L: 150cm W: 85cm H: 75cm

1,995 €



Eight-seater table

WYC-TAB-210-IN

L: 210cm W: 100cm H: 75cm

2,650 €



6-10 seater extending table

WYC-TAB-210-EXT

L: 210 – 300cm W: 100cm H: 75cm

3,995 €



Pair with our Wycombe dining chair, stool and benches. See page 100.

BALMORAL

Balmoral's shapely baluster legs and thick tabletop make it a statement dining table. Choose between round and rectangular styles to suit your space.

Design details

Finish: Natural Oak

Features: Traditional mortise-and-tenon joinery.
Oak is brushed to highlight the grain.
Timber protected with IsoGuard®.

Extending: Tabletop extends from each end on timber tails.
Leaves stored separately.
Spring-loaded latches secure the tabletop.



Four-seater round table

BAM-TAB-120-ROU-NI

Dia: 120cm H: 75cm

3,050 €



Six-seater round table

BAM-TAB-160-ROU-NI

Dia: 160cm H: 75cm

4,650 €



Eight-seater table

BAM-TAB-240-REC-NI

L: 240cm W: 95cm H: 75cm

4,295 €



Ten-seater table

BAM-TAB-320-REC-NI

L: 320cm W: 100cm H: 75cm

5,295 €



6-10 seater extending table

BAM-TAB-185-REC-EXT-NI

L: 275cm W: 100cm H: 75cm

4,950 €



Pair with our Mowbray dining chairs. See page 98.

SHELDRAKE

Ranging from intimate two-seaters to designs that seat up to 12, these extending tables are not only versatile but also classically beautiful.

Design details

Finish: Natural Oak

Features: Timber protected with IsoGuard®.

Extending: Tabletop moves out on timber extension rails.

Leaves stored separately.

Brass toggle latches secure the tabletop.



Four-seater table
SHED-TAB-RND-092-NI
Dia: 92cm H: 76cm
1,050 €



4-6 seater extending table
SHED-TAB-110-EXT-NI
L: 165cm W: 110cm H: 74cm
2,150 €



4-10 seater extending table
INT-TAB-SHE-270-NI
L: 270cm W: 110cm H: 74cm
2,650 €



4-12 seater extending table
SHED-TAB-165-EXT-NI
L: 365cm W: 110cm H: 74cm
3,995 €



Pair with our Wardley dining chairs. See page 90.

HARROGATE

Harrogate combines an oak tabletop with painted pedestal legs. The extending version pulls out from each end to maximise leg room.

Design details

- Finish: Natural Oak
- Features: Timber protected with IsoGuard®.
- Extending: Extends on timber extension rails.
Leaves stored within table.

6-seater extending table
Natural Oak
HAR-TAB-REC-170-IN
L: 170cm W: 90cm H: 73cm
1,995 €



6-10 seater extending table
Natural Oak
HAR-TAB-260-IN
L: 260cm W: 90cm H: 73cm
2,650 €



Pair with our Suffolk dining chairs, see page 93.

SUFFOLK

Suffolk is a relaxed farmhouse-style table, with an oak tabletop and signature turned legs. The two extending sizes make sure you are always prepared for extra guests.

Design details

Finish: Silver Birch & Seasoned Oak

Features: Timber protected with IsoGuard®.

Extending: Extends on a rack-and-pinion mechanism.

Leaves stored within table.

Brass toggle latches secure the tabletop.



Four-seater table

SUF-TAB-150-REC-SI

L: 150cm W: 90cm H: 76cm

1,350 €



Six-seater table

SUF-TAB-200-REC-SI

L: 200cm W: 90cm H: 76cm

1,750 €



4-8 seater extending table

SUF-TAB-230-EXT-SI

L: 150 – 230cm W: 90cm H: 76cm

2,650 €



6-10 seater extending table

SUF-TAB-300-EXT-SI

L: 180 – 300cm W: 90cm H: 76cm

2,995 €



Pair with our Suffolk dining chairs, see page 93 or Wardley dining chairs, page 90.



Chairs, benches & bar stools

Classic upholstered dining chairs,
timeless timber designs, and relaxed
stools for the kitchen island.

BOROUGH

Crafted from solid oak, Borough's petite, sculptural profile is paired with an inset cushion for added comfort.

Design details

- Finish:** Natural Oak
- Features:** Crafted from solid oak.
Ergonomically contoured backrest.
Timber protected with IsoGuard®.



Dining chair
BTN-CHA-SIG-MO-IN
W: 50.5cm D: 51.5cm H: 79.5cm
Seat height: 47cm
From 470 €



TILBURY

Inspired by a chair you might find on the porch of a Mediterranean home, Tilbury sits just as comfortably on its own as it does as a collection around the table.

Design details

- Finish:** Natural Oak
- Features:** Hand-woven rattan seat and traditional oak frame.
Traditionally crafted using mortise and tenon joinery

Dining chair
TIL-CHA-IN
W: 53cm D: 57cm H: 88cm
Seat height: 45cm
525 €



NEW Carver chair
TIL-CAR-CHA-IN
W: 60cm D: 58cm H: 88cm
Seat height: 45cm
750 €



Bar stool
TIL-BAR-IN
H: 92cm W: 42cm D: 43cm
Seat height: 65cm
675 €



WARDLEY

Wardley embodies pared-back Shaker style, from the spindled backrest to the swallowtail joint that secures it.

Design details

- Finish: Shingle
Natural Oak
- Features: Curved seat for comfort.
Oak version protected with IsoGuard®.



Dining chair, Shingle
WAR-CHA-HG
W: 51cm D: 55cm H: 93cm
Seat height: 46cm
465 €



Dining chair, Natural Oak
WAR-CHA-IN
W: 52cm D: 56cm H: 94cm
Seat height: 46cm
525 €



Bar stool, Shingle
WAR-CHA-BAR-HG
H: 102cm W: 48cm D: 51cm
Seat height: 67cm
595 €



Carver chair, Natural Oak
WAR-CAR-CHA-IN
W: 57cm D: 46cm H: 94cm
Seat height: 46cm
875 €



Bar stool, Natural Oak
WAR-CHA-BAR-IN
H: 102cm W: 52cm D: 48cm
Seat height: 67cm
675 €



WYCOMBE

The Arts & Crafts influence is clear in Wycombe's woven rush seat and solid oak frame.

Design details

Finish: Natural Oak

Features: Traditional mortise-and-tenon joinery.

Rush seat with water-resistant wax coating.

Timber protected with IsoGuard®.



Dining chair

WYC-CHA-IN

W: 51cm D: 42cm H: 86cm

Seat height: 47cm

525 €



Two-seater bench with back

WYC-BEN-BCK-111-IN

L: 111cm D: 51cm H: 86cm

Seat height: 47cm

1,050 €



Bar stool

WYC-BAR-IN

H: 100cm W: 47cm D: 46cm

Seat height: 68cm

675 €



Wycombe is also available as a coffee table, see page 42 or as a bench, page 100.

KENILWORTH

Kenilworth marries contemporary design with classic craftsmanship. Customise it in a paint colour of your choice and place it at your dining table, dressing table or desk.

Design details

- Finish:** Silver Birch with Chalked Oak
- Features:** Birch wood frame with profiled legs.
Mortise and tenon joinery.
Profiled oak seat pad.
Oak protected with IsoGuard®.
Discreet glides under feet.



Dining chair
KEN-DIN-CHA-SI
W: 58cm D: 49cm H: 88cm
Seat height: 46cm
595 €



SUFFOLK

This chair is inspired by an antique original, with three spheres across the backrest adding unique detail to the otherwise simple design.

Design details

- Finish:** Shell
Silver Birch
Natural Oak
Seasoned Oak
- Features:** Curved seat for comfort.
Oak version protected with IsoGuard®.



Bar stool, Shell
INT-CHA-BAR-SUF-HE
H: 103cm W: 44cm D: 48cm
Seat height: 67cm
575 €



Dining chair, Silver Birch
INT-CHA-SUF-SI
W: 47cm D: 57cm H: 93cm
Seat height: 46cm
465 €



Bar stool, Seasoned Oak
INT-CHA-BAR-SUF-WOA
H: 103cm W: 44cm D: 49cm
Seat height: 67cm
650 €



Dining chair, Seasoned Oak
INT-CHA-SUF-WOA
W: 47cm D: 57cm H: 93cm
Seat height: 46cm
525 €



Seat cushions

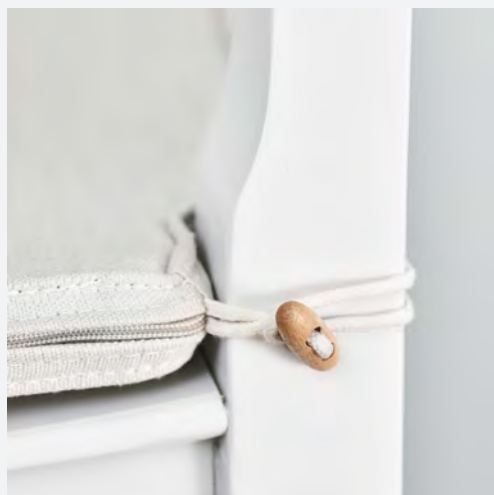
- Finish:** Linara Natural as standard
- Features:** Concealed zip.
Foam-filled for support.
Timber toggle for securing to chair.

Suffolk dining
INT-CHA-CUS-SUF-[]

From 95 €

Suffolk bar stool
INT-CHA-BAR-CUS-SUF-[]

From 95 €



HAVANA

Havana is woven from Lloyd Loom with an elegant skirted design. The woven material contrasts beautifully with timber furniture and brings a relaxed feel to dining.

Design details

- Finish:** Driftwood
Charcoal
- Features:** Lloyd Loom over a rattan frame.
Discreet glides protect floors.

Dining chair
Driftwood
INT-CHA-LOM-HAV-DR
W: 46cm D: 59cm H: 94cm
Seat height: 46cm
435 €



Dining chair
Charcoal
INT-CHA-LOM-HAV-CH
W: 46cm D: 59cm H: 94cm
Seat height: 46cm
435 €



Carver chair
Driftwood
INT-CHA-LOM-HAV-ARM-DR
W: 63cm D: 65cm H: 89cm
Seat height: 46cm
675 €



Carver chair
Charcoal
INT-CHA-LOM-HAV-ARM-CH
W: 63cm D: 65cm H: 89cm
Seat height: 46cm
675 €



Seat cushions

- Finish:** Linara Natural as standard
- Features:** Concealed zip.
Foam-filled for support.

Havana dining INT-CHA-CUS- LOM-HAV-[]	Havana carver INT-CHA-CUS- LOM-HAV-ARM-[]	Montague INT-CHA-CUS- LOM-MON-[]
From 75 €	From 95 €	From 90 €



MONTAGUE

Montague's simple silhouette is defined by its gently curved seat and backrest. These chairs are made from Lloyd Loom with solid timber legs.

Design details

Finish: Driftwood
Charcoal

Features: Durable Lloyd Loom over a rattan frame.
Discreet glides under the legs protect flooring.



Dining chair

Driftwood
INT-CHA-LOM-MON-DR
W: 47cm D: 56cm H: 96cm
Seat height: 47cm
390 €



Dining chair

Charcoal
INT-CHA-LOM-MON-CH
W: 47cm D: 56cm H: 96cm
Seat height: 47cm
390 €



Bar stool

Driftwood
INT-CHA-BBAR-MON-DR
H: 70cm W: 38cm D: 35cm
Seat height: 68cm
330 €



Bar stool

Charcoal
INT-CHA-BBAR-MON-CH
H: 70cm W: 38cm D: 35cm
Seat height: 68cm
330 €



High back bar stool

Driftwood
INT-CHA-BAR-MON-DR
H: 98cm W: 41cm D: 48cm
Seat height: 65cm
525 €



High back bar stool

Charcoal
INT-CHA-BAR-MON-CH
H: 98cm W: 41cm D: 48cm
Seat height: 65cm
525 €





Made to order

You can choose to have many of our upholstered pieces in a custom fabric from our collection and a choice of two leg finishes – turn to page 165 to see all our textiles.

SHOREDITCH

Shoreditch has a simple and contemporary look, with smart metal studs at the top of each leg. Combine the dining and carver chairs for a gathering-ready suite.

Design details

Features: Foam-filled for comfort and support.
Serpentine sprung seat.
Studded details.



Dining chair
SHO-CHA-[]
W: 47cm D: 60cm H: 86cm
Seat height: 48cm
From 325 €



Bar stool
SHO-BAR-[]
H: 70cm W: 40cm D: 36cm
Seat height: 70cm
From 330 €



Carver chair
SHO-CHA-CAR-[]
W: 60cm D: 60cm H: 86cm
Seat height: 48cm
From 525 €



High back bar stool
SHO-BARL-[]
H: 99cm W: 42cm D: 50cm
Seat height: 70cm
From 525 €



MOWBRAY

Combining the comfort of upholstery with the sculptural beauty of a solid oak frame, Mowbray is all about classic lines and ergonomic support.

Design details

- Features:** Foam-filled for comfort and support.
Serpentine sprung seat.
Oak legs protected with IsoGuard®.



Dining chair
MOW-CHA-[]
W: 48cm D: 62cm H: 90cm
Seat height: 48cm

From 390 €



Carver chair *made to order only*
MOW-CAR-CHA-[]
W: 61cm D: 62cm H: 90cm
Seat height: 48cm

From 595 €



MILLER

Miller is our most understated dining chair, with a generous seat and a subtle rake to the backrest for comfort.

Design details

- Features:** Foam-filled for comfort and support.
Serpentine sprung seat.
Oak legs protected with IsoGuard®.



Dining chair
INT-CHA-MIL-[]
W: 47cm D: 59cm H: 87cm
Seat height: 49cm

From 340 €



ARUNDEL

For relaxed dining, look no further than our benches. Made from strong solid oak, these ones share the same architectural design as our Arundel tables.

Design details

Finish: Natural Oak

Features: Reinforced mortise-and-tenon joints.
Oak is brushed to highlight the grain.



Two-seater bench

ARUD-BEN-150

L: 150cm D: 36cm H: 42cm

695 €



Three-seater bench

ARUD-BEN-220

L: 220cm D: 36cm H: 42cm

925 €



Four-seater bench

ARUD-BEN-280

L: 280cm D: 36cm H: 42cm

1,050 €



Arundel bench cushion

Finish: Linara Natural as standard

Features: Foam-filled for comfortable support.
Includes non-slip mat.



150cm	220cm	280cm
ARUD-CUS-150-[]	ARUD-CUS-220-[]	ARUD-CUS-280-[]
From 295 €	From 390 €	From 465 €



WYCOMBE

With a woven rush seat and oak frame, this bench is a natural companion for our Wycombe table. It's just as useful outside of the dining room, too.

Design details

- Finish:** Natural Oak
- Features:** Traditional mortise-and-tenon joinery.
Rush seat with water-resistant wax coating.
Timber protected with IsoGuard®.

Two-seater bench with back
WYC-BEN-BCK-111-IN
L: 111cm D: 51cm H: 86cm
Seat height: 47cm
1,050 €



Two-seater bench
WYC-BEN-111-IN
L: 112cm D: 42cm H: 45cm
675 €



Three-seater bench
WYC-BEN-160-IN
L: 160cm D: 42cm H: 46cm
875 €



Wycombe is also available as a coffee table, see page 42 or as a dining chair, page 91.

EDINBURGH

Edinburgh brings understated grandeur to the boot room or hallway. It's made from solid oak, with turned column supports and a useful grooved undershelf.

Design details

Finish: Vintage Oak

Features: Traditional mortise-and-tenon joinery.
Oak is brushed to highlight the grain.
Timber protected with IsoGuard®.



Two-seater bench
EDID-BEN-1200-VO
L: 120cm D: 42cm H: 47cm

925 €



Three-seater bench
EDID-BEN-1600-VO
L: 160cm D: 42cm H: 47cm

1,250 €



Pair with our Somerton baskets, see page 263.

LUDLOW

Ludlow's deeply shaped saddle seat gives this stool a sculptural look, while the solid oak offers welcome contrast to painted cabinetry.

Design details

Finish: Natural Oak
Darkened Oak

Features: Discreet glides under the legs protect your floors.
Timber protected with IsoGuard®.



NEW Bar stool
Darkened Oak
LUD-BAR-DO
H: 70cm W: 41cm D: 39cm

465 €



Bar stool
Natural Oak
LUD-BAR-IN
H: 70cm W: 41cm D: 39cm

465 €



Buckland bench seating

Buckland is our modular fitted seating, in a relaxed bench style that makes the most of your space. We find it works brilliantly in an open plan kitchen for laid-back dining, or in the boot room for pulling off wellies at the end of a long walk. All Buckland benches feature a painted timber frame and a solid oak top, with tongue-and-groove end panels and the option to add drawers and baskets. Your local store will be able to recommend the right Buckland bench configuration for you. They can also advise on the finishing touches like paint colour and handles and arrange for professional installation.

neptune.com/our-stores



Storage

These are the hero pieces in every home. From smart sideboards to grand dressers, our dining storage is made to be passed down from generation to generation.



FARLOW

Farlow is a minimalist, glass-fronted cabinetry collection that showcases quality craftsmanship and refined style. It features adjustable zig-zag shelving for versatility and functionality.

Design details

Finish: Silver Birch

Constable Green

Features: Made from hardwood plywood, oak interior and kiln-dried tulipwood.

Traditional mortise and tenon joints on the legs.

Hidden recessed magnets hold the door closed.



Low sideboard

FAR-LOW-SID-SI

W: 120cm D: 45cm H: 76cm

2,150 €



Cabinet

FAR-CAB-SI

W: 120cm D: 45cm H: 150cm

3,350 €



Dresser

FAR-GLS-DRE-SI

W: 120cm D: 45cm H: 200cm

4,650 €



Freestanding larder

Silver Birch

FAR-FUL-1200-LAR-SI

W: 120cm D: 45cm H: 200cm

4,950 €



Freestanding larder

Constable Green

FAR-FUL-1200-LAR-CG

W: 120cm D: 45cm H: 200cm

4,950 €



CHICHESTER

This traditional Georgian-style dresser is one of the first pieces of furniture we ever made. Choose from glazed doors, tongue-and-groove open shelving, or opt for hidden storage with a sideboard.

Design details

- Finish:** Shingle exterior with Natural Oak
Shell interior
- Features:** Adjustable shelves.
Upper shelves feature plate grooves.
Oak protected with IsoGuard®.

4ft glazed dresser
CHI-DRE-4FT-GLS-HG
W: 132cm D: 49cm H: 209cm
4,245 €



4ft open rack dresser
CHI-DRE-4FT-OPN-HG
W: 132cm D: 49cm H: 209cm
4,045 €



5ft glazed dresser
CHI-DRE-5FT-GLR-HG
W: 163cm D: 49cm H: 209cm
5,190 €



5ft open rack dresser
CHI-DRE-5FT-OPN-HG
W: 163cm D: 49cm H: 209cm
4,790 €



6ft glazed dresser
CHI-DRE-6FT-GLR-HG
W: 193cm D: 49cm H: 209cm
6,050 €



6ft open rack dresser
CHI-DRE-6FT-OPN-HG
W: 193cm D: 49cm H: 209cm
4,480 €



3ft sideboard
CHI-DRE-2DR-85-B-HG
W: 80cm D: 49cm H: 87cm
1,595 €



4ft sideboard
CHI-DRE-4FT-2DR-B-HG
W: 123cm D: 49cm H: 87cm
2,295 €



5ft sideboard
CHI-DRE-5FT-4DR-B-HG
W: 153cm D: 49cm H: 87cm
2,995 €



6ft sideboard
CHI-DRE-6FT-4DR-B-HG
W: 183cm D: 49cm H: 87cm
3,295 €







SUFFOLK

Suffolk's classic Shaker look suits interiors old and new. Choose between a classic low sideboard and contemporary full-length glazed dresser, ready to show off crockery and decorative wares stored on the shelves.

Design details

- Finish:** Silver Birch with Seasoned Oak exterior
Driftwood interior
- Features:** Adjustable shelves.
Oak protected with IsoGuard®.



4ft sideboard

SUF-SID-4FT-SI

W: 123cm D: 50cm H: 87cm

2,450 €



5ft sideboard

SUF-SID-5FT-SI

W: 153cm D: 50cm H: 87cm

3,050 €



6ft sideboard

SUF-SID-6FT-SI

W: 184cm D: 50cm H: 87cm

3,550 €



4ft contemporary dresser

SUF-DRE-CON-4FT-SI-K

W: 129cm D: 50cm H: 209cm

4,900 €



5ft contemporary dresser

SUF-DRE-CON-5FT-SI-K

W: 159cm D: 50cm H: 209cm

6,045 €



6ft contemporary dresser

SUF-DRE-CON-6FT-SI-K

W: 190cm D: 50cm H: 219cm

7,100 €



HOLBORN

Holborn is a love letter to oak, from the solid timber frame to the beautifully inlaid sliding doors in the base.

Design details

- Finish:** Natural Oak
- Features:** Soft-close sliding doors.
Adjustable shelves.
Oak protected with IsoGuard®.

5ft glazed dresser
HOL-DRE-5FT-K-IN
W: 154cm D: 40cm H: 203cm
5,590 €



6ft glazed dresser
HOL-DRE-6FT-K-IN
W: 186cm D: 40cm H: 203cm
7,045 €



5ft sideboard
HOL-DRE-5FT-2DR-B-IN
W: 152cm D: 40cm H: 84cm
2,595 €



6ft sideboard
HOL-DRE-6FT-2DR-B-IN
W: 183cm D: 40cm H: 84cm
3,295 €



HENLEY

Stately Henley harnesses the natural beauty and strength of solid oak. With deep adjustable shelves, it's cabinetry to cherish for a lifetime.

Design details

- Finish:** Classic Oak
- Features:** Adjustable shelves.
Timber protected with IsoGuard®.

3ft sideboard
HEND-SID-006
W: 83cm D: 49cm H: 87cm
2,195 €



4ft sideboard
HEND-SID-008
W: 122cm D: 49cm H: 87cm
2,595 €



4ft wine rack/bookcase
HEND-WIN-019
W: 122cm D: 38cm H: 87cm
2,195 €







SHEPTON

Shepton's glass-fronted cabinet can be whatever you want it to be - a linen cupboard, a display cabinet or smart dining room storage.

Design details

Finish: Lily

Features: Tempered glass door panels.
Adjustable shelves.

Glazed cabinet
SHEP-CAB-GLS-L/R-LI
W: 71cm D: 40cm H: 185cm
Available in left or right configuration.
2,450 €



SUNBURY

Sunbury looks and feels like an heirloom. This versatile piece could be a compact armoire for storing spare linens, or a dining room sideboard for housing crockery.

Design details

Finish: Lily & Darkened Oak

Features: Adjustable shelves.
Oak protected with IsoGuard®.



Sideboard
SUN-OCA-SID-LI
W: 81cm D: 40cm H: 109cm
1,850 €



ARDINGLY

Ardingly could be anything from a drinks cabinet to a desk or coffee station. The solid oak base and painted cabinetry features adjustable shelves and subtle lighting.

Design details

- Finish: Lily & Natural Oak
- Features: Adjustable shelves.
- Dimmable LED lighting.
- Cable management features.
- Oak protected with IsoGuard®.



Cabinet with mirror
ADL-CAB-LI-MIRR-02
W: 90cm D: 45cm H: 171cm
3,770 €





Freestanding kitchens

From islands and larders to prep stations, each piece combines timeless style with the flexibility to adapt – whether reimagining your kitchen layout or moving with you from one home to another.

BOROUGH

Crafted from natural oak, with gracefully curved corners for a contemporary feel, the Borough freestanding island and chopping block have been designed to effortlessly complement any kitchen.

Design details

Finish: Natural Oak

Freestanding island features:

Sealed solid Carrara marble worktop.

Includes four soft-close drawers.

Space for up to three bar stools.

Chopping block features:

Oak protected with food safe IsoGuard®.

Fixed end-grain oak chopping board.

Concealed soft-close drawer.



Freestanding chopping block

BTN-CHP-IN

W: 77cm D: 45cm H: 86cm

1,595 €



Freestanding kitchen island

BTN-ISL-1700-IN-MARB

W: 170cm D: 85cm H: 91cm

4,400 €



FARLOW

Farlow is a minimalist, glass-fronted cabinetry collection that showcases quality craftsmanship and refined style. It features adjustable zig-zag shelving for versatility and functionality.

Design details

Finish: Silver Birch

Constable Green

Features: Made from hardwood plywood, oak interior and kiln-dried tulipwood.

Traditional mortise and tenon joints on the legs.

Hidden recessed magnets hold the door closed.

Freestanding larder

Silver Birch

FAR-FUL-1200-LAR-SI

W: 120cm D: 45cm H: 200cm

4,950 €



Freestanding larder

Constable Green

FAR-FUL-1200-LAR-CG

W: 120cm D: 45cm H: 200cm

4,950 €



Farlow is also available as a dresser, cabinet and sideboard, see page 105.

SUFFOLK

These designs blend the flexibility of freestanding kitchen cabinetry with the pared-back Shaker style of our Suffolk kitchen.

Design details

- Finish:** Driftwood with Seasoned Oak
Features: Oak protected with IsoGuard®.
 Crafted with traditional joinery.
 Includes dovetail-jointed drawers.



Freestanding
kitchen larder
SUFK-FUL-1100-FS-LAR-DR
W: 120cm D: 65cm H: 222cm
6,050 €



Chopping block
SUFK-BAS-0500-BLK-DR
W: 80cm D: 50cm H: 86cm
2,595 €



CHARLECOTE

Raised on legs, this freestanding island evokes the timeless charm of a grand prep table. Complete with a solid oak worktop, it can be customised in your choice of paint colour.

Design details

- Finish:** Natural Oak
Features: Solid oak worktop.
 Includes dovetail-jointed drawers.
 Britten chrome knob handles as standard.



Freestanding
kitchen island, small
CHLK-1200-ISL-DR-IN
L: 120cm W: 90cm H: 92cm
3,845 €



Freestanding
kitchen island, large
CHLK-1645-ISL-DR-IN
L: 164cm W: 120cm H: 92cm
5,730 €







CHICHESTER

This chopping block and potboard were among the first pieces of furniture we ever made, inspired by the freestanding pieces that once made up a classic English country kitchen.

Design details

- Finish:** Shell with Natural Oak (chopping block)
Shingle with Natural Oak (potboard)
- Features:** Tongue-and-groove undershelf.
Soft-close drawers.
Oak protected with food-safe IsoGuard®.



End grain chopping block
CHI-CHP-TW-HE
W: 81cm D: 55cm H: 86cm
2,075 €



5ft potboard
CHI-DRE-POT-B-HG
W: 153cm D: 49cm H: 87cm
2,750 €



STOOLS

Crafted from solid timber, these kitchen stools combine the decorative with the functional.



Northwich round stool
Natural Oak
NOT-ROU-STO-IN
H: 42cm W: 33cm D: 33cm
295 €



Stratton step stool
Shingle with Natural Oak
STR-STE-505-HG
W: 43cm D: 40cm H: 51cm
650 €





BEDROOM

Harmonious and calming bedroom design not only ensures the room looks beautiful, it is also vital to our wellbeing. From sturdy beds and luxuriously comfortable mattresses through to elegant storage furniture, we have carefully considered every detail. You just need to choose your favourite styles, paint finishes and fabrics to create your very own haven of solace and comfort.

Beds	124
Headboards	132
Mattresses	136
Bedroom furniture	138
Bed linen	142

Beds

Somewhere you retreat to at the end of busy days and linger in on slow Sunday mornings. What could be more important than a great bed?



WALTON

Showcasing the beauty of natural oak and a refined silhouette, Walton is an elegant four-poster bed designed for contemporary grandeur.

Design details

- Finish:** Natural Oak with Hugo Pale Oat
Natural Oak with Linara Dark Fig
- Features:** Sprung slatted base.
Oak frame protected with IsoGuard®.



King four-poster bed
Hugo Pale Oat
WAL-BED-150-HUGPO
W: 157cm L: 211cm H: 160cm
2,550 €



King four-poster bed
Linara Dark Fig
WAL-BED-150-ROMFF
W: 157cm L: 211cm H: 160cm
2,395 €



Super king four-poster bed
Hugo Pale Oat
WAL-BED-180-HUGPO
W: 187cm L: 211cm H: 160cm
2,750 €



Super king four-poster bed
Linara Dark Fig
WAL-BED-180-ROMFF
W: 187cm L: 211cm H: 160cm
2,595 €



CHICHESTER

These beds have an elegant Georgian-inspired design with decorative finials. Choose between a customisable upholstered headboard or a classic timber one.

Design details

- Finish:** Shell
Shell with Linara Natural
- Features:** Sprung slatted base.



Bed base, single
CHI-BED-090B-HE
W: 90cm L: 190cm H: 36cm
875 €

Bed base, double
CHI-BED-135B-HE
W: 135cm L: 190cm H: 36cm
1,195 €

Bed base, king
CHI-BED-150B-HE
W: 150cm L: 200cm H: 36cm
1,250 €

Bed base, super king
CHI-BED-180B-HE
W: 180cm L: 200cm H: 36cm
1,350 €



Wooden headboard, single
CHI-BED-090L-HE-K
W: 91cm L: 195cm H: 125cm
1,675 €

Wooden headboard, double
CHI-BED-135L-HE-K
W: 136cm L: 195cm H: 125cm
2,275 €

Wooden headboard, king
CHI-BED-150L-HE-K
W: 151cm L: 205cm H: 125cm
2,325 €

Wooden headboard, super king
CHI-BED-180L-HE-K
W: 181cm L: 205cm H: 125cm
2,690 €



Upholstered headboard, single

CHI-BED-090L-ROMNA-HE-K

W: 91cm L: 195cm H: 125cm

1,750 €

Upholstered headboard, double

CHI-BED-135L-ROMNA-HE-K

W: 136cm L: 195cm H: 125cm

2,300 €

Upholstered headboard, king

CHI-BED-150L-ROMNA-HE-K

W: 151cm L: 205cm H: 125cm

2,500 €

Upholstered headboard, super king

CHI-BED-180L-ROMNA-HE-K

W: 181cm L: 205cm H: 125cm

2,545 €



LARSSON

Larsson is all about Gustavian-inspired details, with acorn finials and a carved footboard, while the headboard is upholstered in soft linen.

Design details

Finish: Antique Salt with Signature Linen Trellis

Features: Sprung slatted base.

Headboard upholstered in 100% linen.



Bed, double

LAR-BED-135L-CHL-TS

W: 136cm L: 195cm H: 126cm

2,350 €

Bed, king

LAR-BED-150L-CHL-TS

W: 151cm L: 205cm H: 126cm

2,495 €

Bed, super king

LAR-BED-180L-CHL-TS

W: 181cm L: 205cm H: 126cm

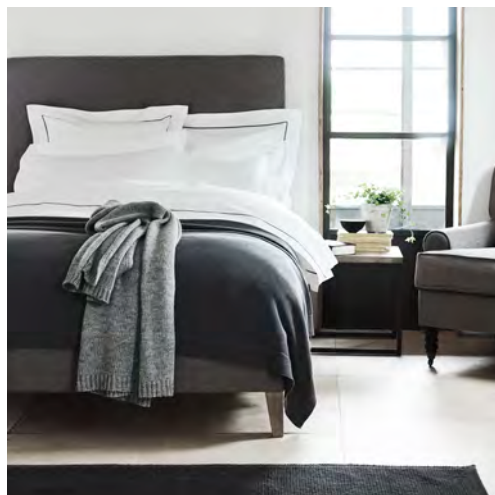
2,795 €

FRANCIS

This upholstered bed base leaves plenty of room for creativity, with customisable fabric and the option to add your own headboard.

Design details

- Finish:** Signature Linen Calico as standard with Natural Oak legs
- Features:** Sprung slatted base.
Oak legs protected with IsoGuard®.



Upholstered bed base, single

FRA-BED-090B-[]

W: 90cm L: 194cm H: 35cm

From 1,050 €



Upholstered bed base, double

FRA-BED-135B-[]

W: 135cm L: 194cm H: 35cm

From 1,295 €



Upholstered bed base, king

FRA-BED-150B-[]

W: 150cm L: 204cm H: 35cm

From 1,395 €



Upholstered bed base, euro king

FRA-BED-160B-[]

W: 160cm L: 204cm H: 35cm

From 1,395 €



Upholstered bed base, super king

FRA-BED-180B-[]

W: 180cm L: 204cm H: 35cm

From 1,550 €



WARDLEY

This four-poster bed is all about the beauty of oak. The simple silhouette is Shaker-inspired, while the pale finish keeps it contemporary.

Design details

- Finish:** Chalked Oak with Linara Natural
Snow with Linara Natural
Warm Black with Llinara Natural
- Features:** Sprung slatted base.
Customisable headboard.
Timber protected with IsoGuard®.



Four-poster bed, king
WARD-BED-150-SN/WB-[]
W: 160cm L: 215cm H: 225cm
From 2,370 €



Four-poster bed, king
WARD-BED-150-IC-[]
W: 160cm L: 215cm H: 225cm
From 2,825 €



Four-poster bed, super king
WARD-BED-180-SN/WB-[]
W: 160cm L: 215cm H: 225cm
From 3,025 €



Four-poster bed, super king
WARD-BED-180-IC-[]
W: 160cm L: 215cm H: 225cm
From 3,220 €





Headboards

The partner to our bed bases and a soft place to rest your head, choose from more than thirty textiles for your headboard. Our upholstered headboards come in Linara Natural as standard - turn to page 165 to see all our textiles.



CLEMMIE

Clemmie's shapely arch reflects antique silhouettes and bestows gentle grandeur on the bedroom. The design is simpler in the smaller sizes, but all make a statement.



Edge detail



Design details

- Features:**
- Foam-filled for comfortable support.
 - Oak struts for securing to bed.
 - French cleat wall fixing supplied.

Single to order only

CLE-HEA-90-[]

W: 90cm D: 8cm H: 126cm

From 675 €



Double

CLE-HEA-135-[]

W: 135cm D: 8cm H: 143cm

From 875 €



King

CLE-HEA-150-[]

W: 150cm D: 8cm H: 143cm

From 995 €



Super king

CLE-HEA-180-[]

W: 180cm D: 8cm H: 143cm

From 1,150 €



CHARLIE

Charlie’s arched and winged design suits both classic and contemporary spaces. There are voids in the wings for fitting reading lights, too.

Design details

- Features:
- Foam-filled for comfortable support.
 - Oak struts for securing to bed.
 - French cleat wall fixing supplied.

Double *to order only*
CRE-HEA-135-[]
W: 150cm D: 25cm H: 147cm
From 1,450 €



Edge detail



King *to order only*
CRE-HEA-150-[]
W: 165cm D: 25cm H: 147cm
From 1,595 €

Super king *to order only*
CRE-HEA-180-[]
W: 195cm D: 25cm H: 147cm
From 1,750 €

OLIVIA

Olivia’s simple scrolled design makes this headboard the perfect canvas for statement fabrics.

Design details

- Features:
- Foam-filled for comfortable support.
 - Oak struts for securing to bed.
 - French cleat wall fixing supplied.

Single
OLI-HEA-090-[]
W: 90cm D: 13cm H: 97cm
From 465 €



Edge detail



Double
OLI-HEA-135-[]
W: 135cm D: 13cm H: 97cm
From 675 €

King
OLI-HEA-150-[]
W: 150cm D: 13cm H: 97cm
From 795 €

Super king *to order only*
OLI-HEA-180-[]
W: 180cm D: 13cm H: 97cm
From 925 €





MATTRESSES

Our mattresses are made in the UK by bedmaking experts Harrison Spinks. Choose between our classic or premium collection, which includes an additional pillow top, both include natural fillings and Coretec™ pocket springs for a comfortable night's sleep.



DEWSBURY

Handcrafted by skilled artisans in Yorkshire, our two new mattresses are made using homegrown hemp and traceable British wool from the Harrison Spinks farm. Combining award-winning Cortec™ pocket springs with luxury natural fillings, it offers the perfect balance of comfort and support for an exceptional sleep experience. Glue-free, foam-free and free from FR chemical treatments, these mattresses ensure peace of mind while delivering a natural, high-quality sleep.

Design details

Classic Filled with British wool, flax and hemp. Precision-engineered Cortec™ pocket springs and micro high-density springs. Medium/firm support. Handwoven wool-viscose blend ticking cover.

Premium Filled with British wool, homegrown flax and hemp, BCI cotton and RMS mohair. Precision-engineered Cortec™ pocket springs and micro high-density springs. Pillow top is comprised of micro spring layers. Medium/firm support.

Single – Classic

DEW-CLS-MAT-090

W: 90cm L: 190cm D: 22cm

Springs: 1,800

1,350 €

Double – Classic

DEW-CLS-MAT-135

W: 135cm L: 190cm D: 22cm

Springs: 2,700

1,995 €

King – Classic

DEW-CLS-MAT-150

W: 150cm L: 200cm D: 22cm

Springs: 3,000

2,550 €

Super King – Classic

DEW-CLS-MAT-180

W: 180cm L: 200cm D: 22cm

Springs: 3,600

2,895 €



King – Premium

DEW-PRM-MAT-150

W: 150cm L: 200cm D: 30cm

Springs: 6,000

3,195 €

Super king – Premium

DEW-PRM-MAT-180

W: 180cm L: 200cm D: 30cm

Springs: 7,200

3,595 €

Bedroom furniture

From grand wardrobes to slender bedside tables, our bedroom furniture collections are as functional as they are beautiful.



FROME

Available in natural oak or lightly painted, Frome's soft rounded corners and woven undershelf brings natural warmth to bedroom schemes.

Design details

- Finish:** Natural Oak
Wam Black Oak
- Features:** Made from strong solid oak.
Soft-close drawer.
Woven honey-coloured undershelf.



Side table

Natural Oak
FRO-TAB-LAM-IN
W: 55cm D: 42cm H: 62cm
925 €



Side table

Warm Black
FRO-TAB-LAM-WBO
W: 55cm D: 42cm H: 62cm
925 €



ALDWYCH

Aldwych's tray-like top and clean lines make it a brilliant canvas for paint, so you can coordinate your storage with the rest of the bedroom.

Design details

- Finish:** Snow
- Features:** Soft-close drawers.
Adjustable shelves.



Tall bedside table

ALD-TAB-LAM-052-SN
W: 52cm D: 42cm H: 65cm
695 €



Low chest of drawers

ALD-DRW-3LOW-SN
W: 75cm D: 42cm H: 75cm
1,195 €



Wardrobe

ADL-WDB-ORI-110-SN
W: 110cm D: 65cm H: 209cm
3,450 €



CHICHESTER

With Chichester's signature combination of oak and painted timber, these pieces are united by Georgian-inspired skirting and mouldings.

Design details

- Finish:** Shell with Natural Oak exterior,
Shingle interior
Shingle with Natural Oak exterior,
Shell interior (housekeepers cupboard
and base)
- Features:** Soft-close drawers.
Adjustable shelves.
Oak protected with IsoGuard®.

Open bedside table
CHI-BCA-OPN-HE
W: 43cm D: 39cm H: 72cm
795 €



Bedside cabinet
CHI-BCA-CLO-L/R-HE
W: 43cm D: 39cm H: 72cm
Available in left or right configuration.
875 €



Dressing table
CHI-DRS-HE
W: 115cm D: 45cm H: 76cm
1,195 €



Original chest of drawers
CHI-DRW-STD-HE
W: 100cm D: 47cm H: 85cm
1,750 €



Grand chest of drawers
CHI-DRW-GND-HE
W: 153cm D: 49cm H: 92cm
2,995 €



Tall chest of drawers
CHI-DRW-5W-HE
W: 100cm D: 47cm H: 105cm
2,150 €



Housekeeper's cupboard base
CHI-HKC-DRW-B-HG
W: 124cm D: 55cm H: 71cm
2,250 €



Housekeeper's cupboard
CHI-HKC-HG
W: 133cm D: 56cm H: 209cm
4,545 €



Original wardrobe
CHI-WDB-ORI-1250-HE
W: 128cm D: 65cm H: 209cm
3,995 €



Grand wardrobe
CHI-WDB-GRN-1850-HE
W: 183cm D: 65cm H: 219cm
5,295 €



LARSSON

Larsson's delicate Gustavian-inspired design brings a soft femininity to the bedroom, with traditional carvings and unique floral hardware.

Design details

Finish: Antique Salt

Features: Soft-close drawers.
Adjustable shelves.



Open bedside table

LAR-BCA-SL

W: 43cm D: 39cm H: 72cm

695 €



Dressing table

LAR-DRS-SL

W: 120cm D: 53cm H: 79cm

975 €



Low chest of drawers

LAR-DRW-3LOW-SL

W: 80cm D: 42cm H: 75cm

1,350 €



Chest of drawers

LAR-DRW3-SL

W: 105cm D: 49cm H: 88cm

1,850 €



Tall chest of drawers

LAR-DRW-5TAL-SL

W: 64cm D: 49cm H: 116cm

1,995 €



Original wardrobe

LAR-WDB-ORI-1040-SL

W: 104cm D: 61cm H: 203cm

3,695 €



Grand wardrobe

LAR-WDB-GRN-1760-SL

W: 170cm D: 61cm H: 203cm

5,050 €



BED LINEN

Our bed linen is made in Portugal using the finest natural materials. Choose between cooling, super-soft cotton and laid-back brushed cotton designs, with coordinating bedspreads for cosy layering.



BEDSPREADS

Ideal for draping over the end of the bed in summer or layering through cooler months, our timeless bedspreads are finished by skilled artisans and promise to bring subtle texture, and comfort to your bedroom year-round.



Elle bedspread, White

100% Cotton
ELLE-BSP-WH
W: 250cm L: 260cm

245 €



Myla bedspread, Green

100% Cotton
MYLA-BSP-GR
W: 240cm L: 260cm

330 €



Etta bedspread, Natural

100% Cotton
ETTA-BSP-NA
W: 250cm L: 260cm

195 €



Tilda bedspread, Cactus

100% Cotton
TLD-BSP-CT
W: 240cm L: 250cm

295 €



ALBERTINE

Albertine promises a dreamy night's sleep, with 500 thread-count Egyptian cotton in a white sateen finish. Breathable and super soft against the skin, its Lily grosgrain ribbon border adds subtle contrast and structure.



Albertine duvet cover

100% Egyptian Cotton
ALT-DUV-COV-[]-LI

Single 135 €
Double 185 €
King 195 €
Super king 225 €

Albertine fitted sheet

100% Egyptian Cotton
ALT-FIT-SHE-[]-LI

Single 80 €
Double 95 €
King 105 €
Super king 120 €

Albertine flat sheet

100% Egyptian Cotton
ALT-FLA-SHE-[]-LI

Single 95 €
Double 105 €
King 120 €
Super king 135 €

Albertine pillow cases

100% Egyptian Cotton
ALT-HWP-[]-LI

Housewife 70x50 75 €
Housewife 90x50 90 €
Square 65x65 95 €

MADALENA

Cool, crisp and luxurious, Madalena is made from pure 300-thread-count cotton percale and adds a touch of femininity with a scalloped hem.



Duvet cover
100% cotton percale
MDL-DUV-COV-[]-WH
Double 185 €
King 195 €
Super king 225 €

Fitted sheet
100% cotton percale
MDL-FIT-SHE-[]-WH
Double 105 €
King 120 €
Super king 135 €

Pillow case pair
100% cotton percale
MDL-OXP-WH
Oxford 70x50 105 €

CALIE

One of our warmer bed linens, Calie is made from a blend of recycled cotton and TENCEL™ lyocell and has been woven and brushed for a super-soft, velvet-touch finish.



Duvet cover
50% recycled cotton,
50% TENCEL™ lyocell
CAL-DUV-COV-[]-OW
Double 135 €
King 160 €
Super king 175 €

Fitted sheet
50% recycled cotton,
50% TENCEL™ lyocell
CAL-FIT-SHE-[]-OW
Double 95 €
King 105 €
Super king 120 €

Pillow case pair
50% recycled cotton,
50% TENCEL™ lyocell
CAL-OXP-70X50-OW
Oxford 70x50 65 €

TUSOCK

Our Tussock designs are crafted from naturally beautiful New Zealand sheepskins. Available in off-white Pearl, the hot water bottle offers welcome comfort on cold winter's nights.



Tussock hot water bottle

Pearl

100% sheepskin

TUS-HOT-BOT-RL

95 €



Find our range of Tussock rugs on page 260, and scatter cushions on page 251.



BATHROOM

Bathrooms are often seen as practical rather than beautiful spaces, but we're firm believers that they can be both. Our collection looks to precedent, with beautiful Georgian-style cabinets and traditional washstands. And yet, every adjustable shelf and soft-close drawer lives up to the demands of modern life. Choose from solid oak with a protective IsoGuard® finish, customisable painted timber, cool Carrara marble and polished chrome accessories.

Chichester washstands	148
Jarrow wall cabinet	151
Edinburgh washstands	152
Taps & bathroom accessories	154

CHICHESTER

These fitted bathroom cabinets each feature traditional mouldings and a customisable paint finish. Visit your local store to choose hardware and discuss the right configuration for you.

Design details

- Finish:** Shell exterior
Shingle interior
- Features:** Ceramic basins.
Constructed with durable mortise-and-tenon joinery.



Curved door base cabinet
CHIBA-BAS-0346-1DC-L/R-HE
W: 35cm D: 52cm H: 84cm
1,295 €



375 three-drawer base cabinet
CHIBA-BAS-0375-3DW-HE
W: 38cm D: 52cm H: 84cm
1,250 €



600 sink door base cabinet
Includes undermounted sink
CHIBA-BAS-0600-2D-HE
W: 60cm D: 52cm H: 84cm
1,395 €



600 sink drawer base cabinet
Includes undermounted sink
CHIBA-BAS-0600-2DW-HE
W: 60cm D: 52cm H: 84cm
1,550 €



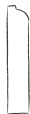
Base end panel sold in sets of two
CHIBA-BAS-EP-HE-02
W: 12mm D: 565mm H: 840mm
150 €



Kick board
CHIBA-BAS-KB-HE
W: 2000mm D: 12mm H: 120mm
60 €



Skirting board
CHIBA-SKT-2700-HE
W: 2700mm D: 20mm H: 100mm
110 €





CHICHESTER

A traditional countertop design with an oak surface, or an undermounted basin surrounded by Carrara marble. Which will you choose?

Design details

- Finish:** Shell with Natural Oak exterior
Shell with Carrara marble exterior
Shingle interior
- Features:** Ceramic basins.
Oak protected with IsoGuard®.



850 countertop washstand
CHIBA-WST-0850-1DW-HE
W: 85cm D: 45cm H: 73cm
1,750 €



500 reversible door wall cabinet
CHIBA-WAL-0500-1DS-L/R-HE
W: 50cm D: 18cm H: 70cm
695 €



1220 countertop washstand
CHIBA-WST-1220-1DW-HE
W: 122cm D: 45cm H: 73cm
2,195 €



640 washstand
CHIBA-WSU-0640-2DK-HE
W: 64cm D: 56cm H: 97cm
2,020 €



500 countertop washstand
CHIBA-WST-0500-L/R-HE
W: 50cm D: 43cm H: 73cm
1,395 €



1240 double door washstand
CHIBA-WSU-1240-4DK-HE
W: 124cm D: 56cm H: 97cm
3,425 €



640 countertop washstand
CHIBA-WST-0640-2D-HE
W: 64cm D: 45cm H: 73cm
1,895 €



1240 double drawer washstand
CHIBA-WSU-1240-4DWK-HE
W: 124cm D: 56cm H: 97cm
3,725 €



1240 countertop washstand
CHIBA-WST-1240-4D-HE
W: 124cm D: 45cm H: 73cm
3,150 €



960 curved washstand
CHIBA-WSU-0960-2DCK-HE
W: 96cm D: 56cm H: 97cm
3,825 €





JARROW

Jarrow is a mirrored bathroom cabinet – with a difference. It's designed to recess into the wall so you get practical depth without the bulkiness.

Design details

Finish: Shell

Features: LED lighting.

Three adjustable glass shelves.

Jarrow 560 wall cabinet
JRW-WAL-560-L/R-HE
W: 56cm D: 21cm H: 82cm
1,150 €



EDINBURGH

The warmth and texture of solid oak set against luxurious marble. Edinburgh comes in two styles – louvred doors or open shelving.

Design details

Finish: Vintage Oak

Features: Undermounted ceramic basin.

Carrara marble with a honed finish.

Timber protected with IsoGuard®.

700 open washstand
EDIB-WSU-0700-OP-VO-K
W: 70cm D: 56cm H: 95cm
2,245 €



1000 open washstand
EDIB-WSU-1000-OP-VO-K
W: 100cm D: 56cm H: 95cm
2,625 €



640 closed washstand
EDIB-WSU-0640-L/R-VO-K
W: 64cm D: 56cm H: 97cm
2,300 €



1000 closed washstand
EDIB-WSU-1000-VO-K
W: 100cm D: 56cm H: 97cm
3,325 €



1490 closed washstand
EDIB-WSU-1490-VO-K
W: 149cm D: 56cm H: 97cm
4,495 €





TAPS

Bathroom taps with a classic chrome finish. Choose between classic and contemporary designs, and taps to mount on the sink or on the wall.

Design details

Finish: Chrome

Bamburgh lever tap

BAM-TAP-S3H

W: 180mm D: 140mm H: 880mm

295 €



Bamburgh single-lever tap

BAM-TAP-SLT

W: 116mm D: 273mm H: 373mm

330 €



Bamburgh wall-mounted tap

BAM-TAP-WMT

W: 250mm D: 194mm H: 112mm

485 €



Perrin & Rowe single-lever tap

BCA-TAP-PER-4341CP

W: 120mm D: 270mm H: 380mm

525 €



ACCESSORIES

The small but important details that ensure everything has a place in the bathroom, each designed to match beautifully with our Bamburgh taps.

Design details

Finish: Chrome

Features: Brass with a polished chrome finish.
Fitting hardware supplied.

Bamburgh hook

BAM-ACC-HOOK

Dia: 6cm H: 6cm

33 €



Bamburgh loo roll holder

BAM-ACC-LRH

W: 18cm D: 9cm H: 9cm

60 €



Bamburgh towel ring

BAM-ACC-RIN

W: 21cm D: 6cm H: 24cm

65 €



Bamburgh towel rail

BAM-ACC-RAI

W: 66cm D: 6cm H: 7cm

115 €







Leather Saddle

NEPTUNE

Signature Linen
Saffron

NEPTUNE



DECORATING, COLOURS & FABRICS

We take a cohesive approach to interiors. When it comes to creating a beautiful and relaxing space, details like paint colours and tiles provide the all-important backdrop for furniture and accessories. This section guides you through our paint and fabric collections, as well as our wall and floor coverings and IsoGuard® finish.

Paint	159
Timber aftercare	162
Fabrics	165
Wall & floors	170



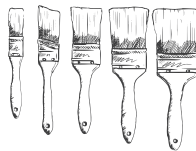
Paint

Developing our own paint was a natural next step for us, allowing us to curate a colour palette which offers a spectrum of choice without feeling overwhelming. It also means we can ensure the very best quality and results.

Working closely with our expert British supplier, our eggshell and emulsion paints are all water-based and very low in VOCs (Volatile Organic Compounds).

The same eggshell paint is used to customise our timber furniture. Our paint service is a versatile tool for tailoring our furniture to suit your home, while the ability to repaint it in years to come ensures longevity.

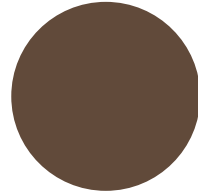
Head to your local store to speak to our team or visit our website to find out more about our customisable painted furniture service.



This season in colour

Introducing our seasonal paint colour, Saddle. A rich, medium-toned brown inspired by the worn leather patina of a classic English saddle. Sitting between russet and chocolate brown, this mellow, velvety shade brings dark drama to stand-out pieces of furniture or warmth to colour-drenched snugs, libraries and boot rooms.

Saddle's grounded, earthy hue, with slight red undertones, ensures it pairs well with a broad palette of accent colours. Pair it with complementary shades, such as warm green Olive or deep Blakeney Blue. Or add contrast with colours like Potter's Pink, Old Rose or Saffron.



Saddle

Our paints are absolutely always water-based. High-performing, low in chemicals and practically odour-free, they're a far better option for our homes, the environment and our own health. It also means that brushes need only a simple rinse with water.

It's worth noting that the colours shown here are a close representation of their true shades, but to see the real thing, we suggest trying our sample paint pots.

Matt emulsion

Finish: deep in tone and matt. Best suited for previously painted walls, wallpapered walls, lining paper ceilings and newly plastered walls.

125ml sample pot 7 € / 2.5l 65 €

Eggshell

Finish: up to 22% sheen and durable. Suitable for wooden doors, furniture, trim, skirting, cornicing and walls.

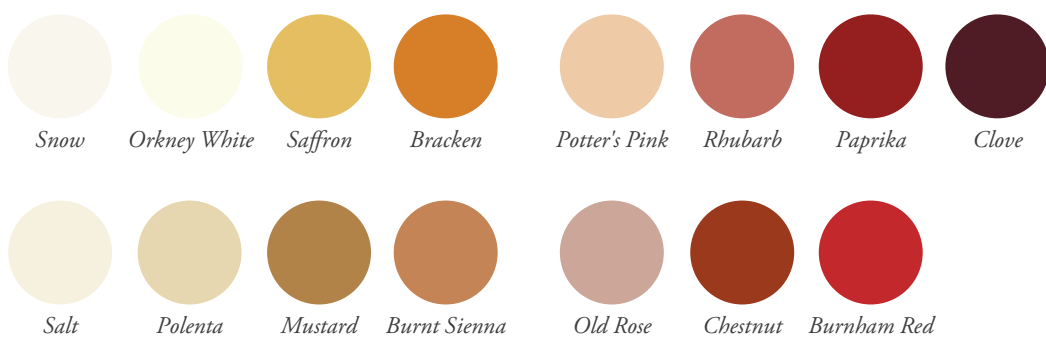
2.5l 90 €

Primer undercoat

A neutral base to use on most prepared surfaces from walls to woodwork for the highest quality finish.

1l 40 € / 2.5l 95 €

Our paints



Timber care with IsoGuard®

IsoGuard® is a wood finishing oil – but not as you know it. All our interior solid oak furniture and kitchen cabinetry comes pre-treated with interior IsoGuard®, while our teak garden furniture is finished with the exterior version.

The revolutionary formula penetrates below the surface of the timber, bonding with it at a cellular level. It creates an extremely effective barrier against stains and spills without masking the natural beauty of the timber.

It contains linseed oil, a natural food safe ingredient that protects the timber against damage. Linseed oil can darken the appearance of oak, so we add a pigment to correct this.



Interior finishes

The interior IsoGuard® comes in three finishes which lend individual character to our different furniture collections.

Natural Oak

This is an authentic reflection of white oak in its natural state. The added pigment simply reverses the darkening effect of the linseed oil to restore the original colour.

Seasoned Oak

Seasoned Oak has a lighter hue than Natural Oak, which highlights the contrasting wood grain. It's designed to emulate the subtly silvered patina oak naturally develops with age.

Chalked Oak

The palest of our IsoGuard® finishes, Chalked Oak lends our oak a limewashed look. The result is light and contemporary, blending in seamlessly with other materials and colours in the home.

For reapplying IsoGuard®**Natural Oak IsoGuard®**

100ml 30 €

Seasoned Oak IsoGuard®

100ml 30 €

Chalked Oak IsoGuard®

100ml 30 €

For taking care of all of your IsoGuard® protected designs**IsoGuard® care kit**

Includes: Surface Soap for deep cleaning; LimeSpot treatment for stubborn spots and stains; Spot Stain remover for greasy marks and fingerprints; and two e-cloths for wiping, dabbing and drying.

ISOG-CAR-KIT 80 €

Exterior IsoGuard® touch up kit

Includes: Wood Cleaner for general upkeep; Top Coat oil for refreshing the finish. Available in two finishes for our outdoor furniture: Moss and Weathered Moss.

ISOG-EX-MOSS/WMOSS-CAR-KIT 140 €

Eco Refresh spray

For refreshing and restoring

ISOG-ECO-SPR-050 500ml 90 €

Surface Care spray

For a monthly deep clean

ISOG-SUR-SPR-050 500ml 32 €

Tannin Spot remover

For black marks left by wet pans and cutlery

INTL-CAR-500-TAN-REM 500ml 60 €



Our fabrics

We have curated a fabric collection that allows you to explore and experiment, confident in the knowledge that we work with the very best manufacturers.

We can't relax and enjoy our homes if we are worrying about damaging upholstery or soft furnishings, so choosing the right material for the right purpose is especially important here.

Our collection spans hard-wearing wool and cotton fabrics, as well as pure linens. All are quality and performance tested so we know exactly how they will behave in your home and how best to care for them.

A note on Martindale

A Martindale score is the amount of rubs an upholstery fabric can take before it begins to show signs of wear and tear. We split the results of these tests into scores that relate to two categories: 'everyday use' and 'heavy duty'.

Fabrics that are suitable for everyday use sit between 20,000 to 25,000 and are ideal for general upholstery in the home like armchairs and sofas.

The heavy duty fabrics sit between 25,000 to 100,000. The higher the score, the better it will cope in high-traffic areas of the home. Any fabric in this category is also an excellent choice for families with children and pets.



L I N E N

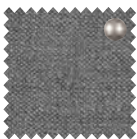
A tactile, yet remarkably durable fabric that brings classic texture to everyday upholstery and has the beautiful look of natural linen slubs.



Chloe Ash
FAB-CHL-AH
115 €/pm



Chloe Fig
FAB-CHL-FF
115 €/pm



Chloe Lead
FAB-CHL-LD
115 €/pm



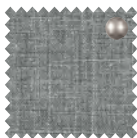
Chloe Denim
FAB-CHL-DN
115 €/pm



Harry Mineral
FAB-HRY-MIN
115 €/pm



Harry Cloud
FAB-HRY-CD
115 €/pm



Harry Storm
FAB-HRY-TM
115 €/pm



Harry Mortar
FAB-HRY-TR
115 €/pm



Harry Rose Hip
FAB-HRY-RH
115 €/pm



Heavyweight Linen
Pale Oat
FAB-LIN-PO
115 €/pm



Heavyweight Linen
Millet
FAB-LIN-ML
115 €/pm



Heavyweight Linen
Spelt
FAB-LIN-SP
115 €/pm



Signature Linen
Calico
FAB-SIG-LIN-CA
115 €/pm



Signature Linen
Trellis
FAB-CHL-TS
115 €/pm



Signature Linen
Moss
FAB-CHL-MO
115 €/pm



Signature Linen
Saffron
FAB-SIG-LIN-AF
115 €/pm

COTTON LINEN

Seamlessly blending the strength and softness of cotton with the refined texture of linen, for a brushed fabric that is both durable and versatile.



Linara Natural
FAB-ROM-NA
90 €/pm



Linara Cobble
FAB-ROM-CL
90 €/pm



Linara Moss
FAB-ROM-MO
90 €/pm



Linara Dark Fig
FAB-ROM-FF
90 €/pm



Linara Flax Blue
FAB-ROM-FB
90 €/pm



Linara Smoke
FAB-ROM-SM
90 €/pm



Linara Walnut
FAB-ROM-WAL
90 €/pm

COTTON VELVET

Woven from cotton with a touch of polyester for enhanced durability and a delicate sheen, our luxurious velvet strikes the perfect balance between strength and versatility.



Isla Ermine
FAB-ISL-01-ER
90 €/pm



Isla Old Rose
FAB-ISL-01-OD
90 €/pm



Isla Steel
FAB-ISL-01-EE
90 €/pm



Isla Finch
FAB-ISL-01-FI
90 €/pm



Cotton Velvet
Rust
FAB-COT-VEL-RT
90 €/pm



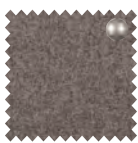
Cotton Velvet
Dark Olive
FAB-COT-VEL-DOL
90 €/pm

WOOL

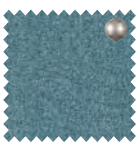
Luxuriously soft, breathable, and durable, our collection of natural, hypoallergenic wools is designed to keep you warm in winter while allowing airflow in summer.



Angus Apricot
FAB-ANG-AC
95 €pm



Angus Flint
FAB-WOO-AN
95 €pm



Angus Teal
FAB-ANG-TE
95 €pm



Harris Tweed
Fig Check
FAB-HRS-FF
135 €pm



Harris Tweed
Bircher
FAB-HRS-BI
135 €pm



Harris Tweed
Marmalade
FAB-HRS-MM
135 €pm

LEATHER

Sustainably sourced from European hides, our pure leather is tanned in Italy and finished with a natural blend of oil and wax for added protection.



Tan Leather
Not available
by the metre

BOUCLE

With subtle loops that add texture and give it a tactile quality, our tightly woven Bouclé fabric has a high rub count which makes it a durable choice for upholstery and cushions.



Boucle Ecrú
FAB-BOU-ECRU
90 €pm



Fermoie

This season we're continuing to work with Fermoie, to showcase the fabrics of this iconic British designer and maker of fine textiles on some of our favourite Neptune designs.

Based just a few miles from us in Wiltshire, Fermoie shares our commitment to creating timeless designs that are easy to live with, and an unwavering dedication to providing quality products and service.

Walls & floors

Strong engineered oak and spruce shiplap boarding. Rustic terracotta tiles with a glossy glaze and cool, clean-cut marble tiles. Our diverse wall and floor coverings inject character into the home, weaving a tale of tone and texture for you to build upon.



WILCOT

The ceramic Wilcot wall tiles are designed and hand finished by our expert partners in Marlborough, using time honoured techniques. Each is finished with a crackle glaze, so no two are exactly the same.

Design details

Finish: Silver Birch / Orkney White / Pale Oat / Flax Blue / Aqua Blue / Sage / Rhubarb

Features: Made from bisque fired clay.
Finished with a gloss crackled glaze.
Use our Crackle Glaze Sealant to protect against water, oil, grease and limescale.

NEW Wilcot 7.5x15cm tiles

WIL-TIL-075X150-AB/AE/FB/OKW/PO/RB/SI

L: 15cm W: 7.5cm D: 1cm

44pc 0.5m² pack

185 € (370 € per m²)



NEW Wilcot 10x20cm tiles

WIL-TIL-100X200-AB/AE/FB/OKW/PO/RB/SI

L: 20cm W: 10cm D: 1cm

28pc 0.5m² pack

185 € (370 € per m²)

NEW Wilcot 13x13cm tiles

WIL-TIL-130X130-AB/AE/FB/OKW/PO/RB/SI

L: 13cm W: 13cm D: 1cm

30pc 0.5m² pack

175 € (350 € per m²)

BARBURY

The terracotta Barbury wall tiles are handmade by our expert partners in Marlborough, using traditional methods. Each is finished by hand in their Wiltshire studio with a crackle glaze, so no two are exactly the same.

Design details

Finish: Blakeney Blue / Old Rose / Shingle / Saffron

Features: Made from terracotta.
Finished with a gloss crackled glaze.
Use our Crackle Glaze Sealant to protect against water, oil, grease and limescale.



Barbury crackle glaze tiles

BAR-TIL-110X110-HG/OD/FB/BB/AF

L: 11cm W: 11cm D: 1cm

40pc 0.5m² pack

260 € (520 € per m²)

Crackle glaze tile sealant, 500ml

For use on Barbury crackle glaze tiles

CRA-GLA-SEA-05

27 €



MELDON

Meldon is one of our most rustic tiles, with uneven edges and a ridged surface that create an organic feel once laid. Each tile is made from terracotta and glazed by hand in Wiltshire. Choose between four soft, neutral colourways.

7.5x15cm ceramic tiles
MEL-TIL-075X150-FO /MI/SN/ST
L: 15cm W: 8cm D: 1cm
44pc 0.5m² pack
150 € (300 € per m²)

10x20cm ceramic tiles
MEL-TIL-100X200-FO/MI/SN/ST
L: 20cm W: 10cm D: 1cm
25pc 0.5m² pack
150 € (300 € per m²)



Fog

Mist



Snow

Salt

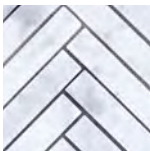
KENNET

These wall and floor tiles are crafted from luxurious Carrara marble. Choose from a classic rectangular shape, sleek and contemporary herringbone or the hexagonal design which creates a beautiful honeycomb pattern once laid.

Kennet marble tiles
KEN-TIL-100X200
L: 20cm W: 10cm D: 1cm
25pc 0.5m² pack
150 € (300 € per m²)

Kennet herringbone marble tiles
KEN-TIL-HER-01
L: 31cm W: 26cm D: 1cm
12 sheets (42 tiles per sheet) 1m² pack
160 € (160 € per m²)

Kennet hexagonal marble tiles
KEN-TIL-HEX-01
L: 29cm W: 28cm D: 1cm
12 sheets (36 tiles per sheet) 1m² pack
205 € (205 € per m²)

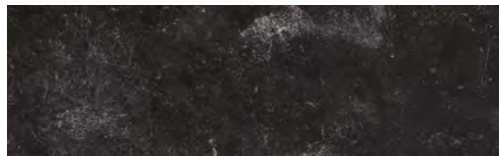


10x20cm

Herringbone

Hexagonal

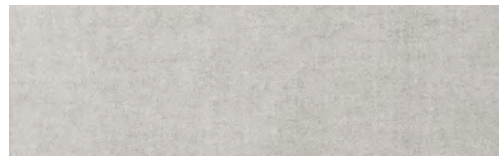




Buxton limestone floor tiles
 River Grey. Sold as single tile.
 FLO-LIM-RG
 L: 60cm W: 40cm D: 2cm
 32 € per tile (133 € per m²)



Cranbrook spruce rough boarding 3.3m²
 Silver Birch, for walls and ceilings
 CRA-BOA-REB-202X22X3500
 L: 350cm W: 20.2cm D: 2.2cm
 390 € (118 € per m²)



Hepworth wall covering
 Natural
 HEP-WAL-COV-NA
 L: 850cm W: 70cm
 220 € per roll

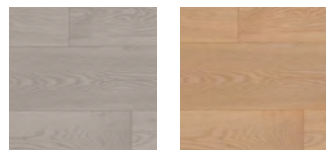
Cranbrook and Hepworth are suitable
 for using on ceilings as well as walls,
 but not as flooring.

MARTON

Marton is our engineered wood flooring, which combines the stability of plywood with the beauty of solid oak. It has a classic plank design, with traditional tongue and groove profiling on each board to ensure a seamless fit. Its IsoGuard® finish protects the oak against wear and tear, while a UV cured top coat maintains the colour.

Design details

Finish: Chalked Oak or Natural Oak
Features: Protected with IsoGuard®.



Chalked Oak

Natural Oak

Marton engineered flooring 2.888m² pack
 L: 190cm W: 19cm D: 1.5cm
 Chalked Oak MAR-FLO-IC-01
 Natural Oak MAR-FLO-IN-01
 330 €





LIGHTING

Lighting has a profound effect on how we live in our homes, with the ability to transform the mood of a room and mark the shift from day to night. Our collection spans innovative architectural lighting, statement pendants, versatile task lights, and everything in between. Add beautiful cotton and linen lampshades, and you have everything you need for harmonious, layered lighting.

Lamps	178
Desk lamps	185
Floor lamps	186
Shades	191
Pendant & ceiling lights	194
Wall lights	202

Table lamps

Our table lamps come in all shapes and sizes, from pared-back designs to statement pieces. In metal, ceramic, glass, timber and rattan, there's a lamp for every setting.



MARINA

Complemented by an antique brass stepped base, this petite table lamp marries feminine scalloped shapes with the natural texture of raffia.

Design details

Finish: Raffia and Antique Brass
Shade: Marina
Bulb: E14



Table lamp
MAR-LAM-420
Dia: 26cm H: 43cm
175 €



DELPHI

The solid spherical base of Delphi is hand-carved by skilled artisans, and once lit the calming hues of natural onyx are complemented by the warm white Henry lampshade.

Design details

Finish: Natural Onyx
Shade: Henry
Bulb: E27



Table lamp with 15" Henry shade
in Warm White
DEL-LAM-GN-SHA-044-15H-WW
Dia: 37cm H: 48cm
530 €



CASPIAN

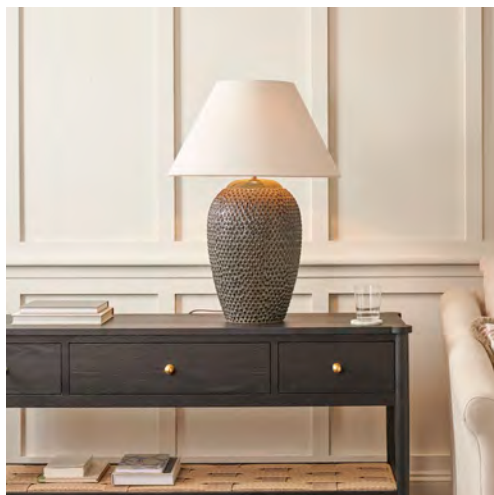
Caspian is crafted from ceramic, with a beaded texture, striking deep green-blue glaze and a linen lampshade.

Design details

Finish: Reactive Green

Shade: Caspian

Bulb: E27 GLS



Large table lamp
with linen shade
CAP-LAM-680
Dia: 50cm H: 68cm
490 €



Small table lamp
with linen shade
CAP-LAM-380
Dia: 38cm H: 39cm
265 €

DUNE

Inspired by the intricate patterns of shells found across the British coastline, Dune has a distressed finish and comes with a linen lampshade.

Design details

Finish: Reactive Blue

Shade: Dune

Bulb: E27 GLS



Large table lamp
with linen shade
DUN-LAM-730
Dia: 40cm H: 73cm
385 €



Small table lamp
with linen shade
DUN-LAM-450
Dia: 34cm H: 45cm
265 €

DALSTON

With its Chinese-inspired double gourd shape and lustrous glaze, choose Dalston where you want impactful, stylish lighting.

Design details

Finish: Shell
 Shade: Henry or Lucile in Clara Warm White
 Bulb: E27 GLS



Lamp base
 DAL-LAM-HE
 Dia: 28cm H: 53cm
 235 €



With Henry 19.5" shade
 DAL-LAM-HE-SHA-020-19H-WW
 320 €

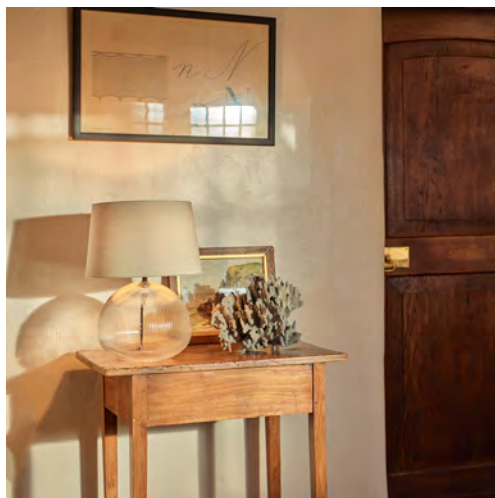
With Lucile 19.5" shade
 DAL-LAM-HE-SHA-020
 350 €

MALTON

Malton's organic shaped table lamps are crafted from fluted glass and come with matching lampshades for a softly diffused light.

Design details

Finish: Glass
 Shade: Malton
 Bulb: E27 GLS



Round table lamp with linen shade
 MAL-LAM-440-GL-BZ
 Dia: 33cm H: 45cm
 245 €



Pill table lamp with linen shade
 MAL-LAM-580-GL-BZ
 Dia: 43cm H: 59cm
 275 €





ATHENA

Skilfully handwoven from natural honey-coloured rattan, this shapely table lamp is rich in both warmth and texture.

Design details

Finish: Rattan
Shade: Athena
Bulb: E27 GLS

Medium lamp base
ATH-LAM-350-RAT
Dia: 24cm H: 45cm
330 €

With scalloped rattan shade
ATH-LAM-MED-18A-RAT
495 €

With Oliver 18" shade
ATH-LAM-MED-18O-WW
400 €



Large lamp base
ATH-LAM-450-RAT
Dia: 32cm H: 56cm
465 €

With scalloped rattan shade
ATH-LAM-LRG-22A-RAT
660 €

With Oliver 22" shade
ATH-LAM-LRG-22O-WW
570 €



MASON

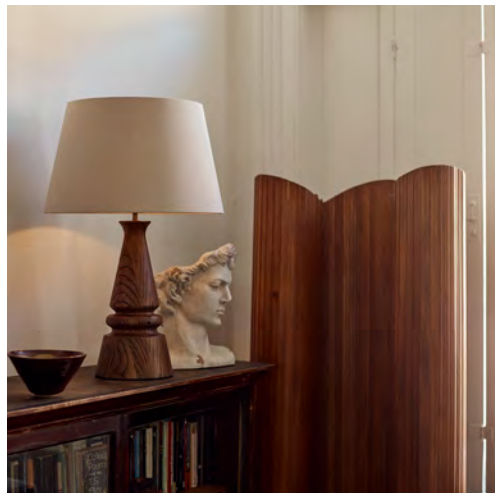
Reminiscent of a classic chess piece, Mason's sculptural design is carved from solid ash and hand-finished with a nut-brown stain.

Design details

Finish: Nut-brown stain

Shade: Mason

Bulb: E27 GLS



Medium lamp base,
nut-brown with linen shade

MAS-LAM-MD-WL

Dia: 44cm H: 67cm

490 €



DAWES

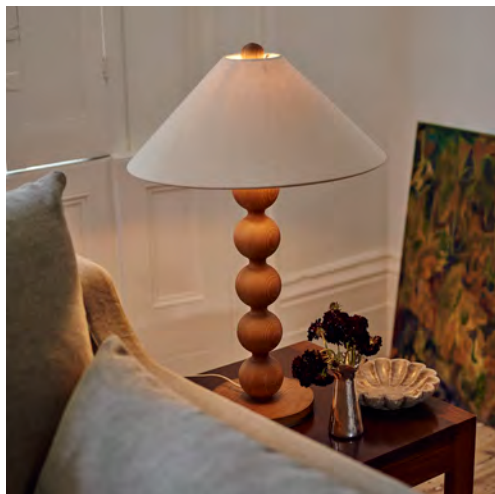
Inspired by the revival of the bobbin, Dawes is a statement, oversized lamp that comes complete with a linen shade.

Design details

Finish: Honey stain

Shade: Dawes

Bulb: E27 GLS



Bobbin lamp base,
with linen shade

DAW-BOB-TAB-01

Dia: 46cm H: 70cm

525 €



HANOVER

Hanover is full of subtle Regency references, like the ribbed and fluted details to the stem. Choose from nickel and black-bronze finishes.

Design details

- Finish: Nickel/Black Bronze
- Shade: Henry or Oliver in Clara Warm White
- Bulb: E14 Golf Ball



Lamp base, small
HAN-LAM-025-BZ/NI-01
W: 6cm D: 9cm H: 32cm
115 €

With Henry 7.5" shade
HAN-LAM-SML-BZ/NI-01-7H-WW
147 €

With Oliver 8" shade
HAN-LAM-SML-BZ/NI-01-8O-WW
148 €

HIGHGATE

Crafted from oak, Highgate's slender turned stem evokes Swedish Gustavian style.

Design details

Finish: Seasoned Oak
Shade: James or Henry in Clara Warm White
Bulb: E27 GLS



Seasoned Oak lamp base, small
 HIG-SML-LAM-IS
 Dia: 17cm H: 41cm

265 €

With James 11" shade
 HIG-LAM-SML-IS-11J-WW

320 €

With Henry 15" shade
 HIG-LAM-SML-IS-15H-WW

330 €



BROMPTON

A smart feature on any desk or side table, this industrial-style lamp is adjustable in three places using traditional wingnuts.


Design details

Finish: Nickel
Bulb: E27 Golf Ball



Desk lamp
 BRO-LAM-DES-NI
 Dia: 14cm H: 66cm
 225 €





Floor lamps

Floor lamps play a key role in layered lighting schemes, from articulated reading lamps to decorative designs for adding atmosphere.

BROMPTON

These reading lamps are adjustable in height and angle using vintage-style wingnuts. Choose between a polished nickel or warm brass finish.

Design details

Finish: Nickel/Antique Brass

Bulb: E27 Golf Ball

Reading floor lamp
BRO-LAM-REA-BA-01/NI
Dia: 20cm H: 105cm
525 €



HANOVER

This floor lamp's Regency-inspired design has a subtle grandeur, with a stepped square base and traditional bronze or nickel finish.

Design details

Finish: Nickel/Black Bronze

Shade: James or Lucile in Clara Warm White

Bulb: E27 GLS

Floor lamp base
HAN-LAM-125-NI/BZ
Dia: 20cm H: 132cm
290 €
With James 14" shade
HAN-LAM-FLO-NI/BZ-14J-WW
355 €
With Lucile 19" shade
HAN-LAM-FLO/125-BZ-19L-WW
400 €



HIGHGATE

Highgate's slender, lathe-turned stem and petite base allow it to squeeze into smaller corners, where it pairs beautifully with empire lampshades.

Design details

Finish: Silver Birch/Seasoned Oak
Shade: Henry or Oliver in Clara Warm White
Bulb: E27 GLS



Silver Birch floor lamp base

HIG-LAM-FLO-SI

Dia: 25cm H: 120cm

450 €

With Henry 15" shade

HIG-LAM-FLO-SI-SHA-044

515 €

With Oliver 18" shade

HIG-LAM-FLO-SI-SHA-038

530 €



Seasoned Oak floor lamp base

HIG-LAM-FLO-IS

Dia: 25cm H: 120cm

625 €

With Henry 15" shade

HIG-LAM-FLO-IS-SHA-044

690 €

With Oliver 18" shade

HIG-LAM-FLO-IS-SHA-038

705 €





Lampshades

You've chosen your lamp base now all you need is an equally beautiful lampshade.



ATHENA

Athena's scalloped design takes its inspiration from shell-like silhouettes. Handwoven from natural rattan, its rich honey-colour brings texture and warmth.

18"	165 €
-----	-------

24"	195 €
-----	-------



Rattan



OLIVER

A little wider than a typical empire shade, Oliver's sloping design adds a sophisticated flourish to floor and table lamps.

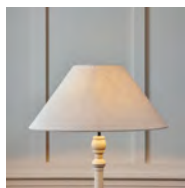
8"	33 €
----	------

12"	55 €
-----	------

18"	80 €
-----	------

22"	105 €
-----	-------

28"	155 €
-----	-------



Clara Warm White



LUCILE

Lucile is a classic French drum lampshade, with a very subtle slope that's equally suited to traditional and contemporary lamp bases.



12"	60 €
15"	90 €
17"	95 €
19"	115 €



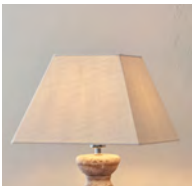
Clara Warm White

JAMES

With its sloping square shape, James is a smart shade that pairs well with clean-lined lamp collections like Hanover.



8"	39 €
11"	55 €
14"	65 €
16"	80 €



Clara Warm White

BRUNSWICK

Brunswick is designed to shroud a wall light and soften its light for an ambient glow.

Clara Warm White

5.5"	26 €
------	------



HENRY

A classic empire shade that's available in timeless neutral colourways and beautiful patterned fabrics.

7.5"	33 €
------	------

15"	65 €
-----	------

19.5"	95 €
-------	------

26"	150 €
-----	-------



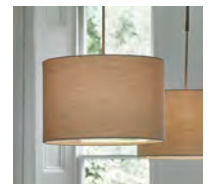
Clara Warm White



IONA

This is our pendant lampshade, which comes with a removeable diffuser to hide the bulb and omit a softer light.

18"	175 €
-----	-------



Clara Warm White



Pendant & ceiling lights

Classic and contemporary pendants for greeting you in the hallway, illuminating family dinners and hanging low over the kitchen island.

CECILE

Cecile combines gathered cotton-linen shades with a serene, scalloped form and antique brass hardware.

Finish: Linen-cotton blend with Antique Brass.

Bulb: E27

Cable: L: 300cm

NEW Gathered pendant, small

CEC-PENS-LIN

H: 26cm W: 40cm L: 40cm

295 €



NEW Gathered pendant, large

CEC-PENL-IN

H: 31cm W: 70cm L: 70cm

650 €



ATHENA

Inspired by shell-like silhouettes, Athena's scallop-edged pendant and chandelier are handwoven from natural rattan and come with opal globe bulb covers for a warm glow.

Finish: Rattan with Antique Brass
Bulb: G9



Pendant light
ATH-PENL-RAT
Dia: 45cm H: 20cm
265 €



Uplighter chandelier
ATH-LAM-CHA-RAT
Dia: 80cm H: 50cm
650 €



MARINA

Suspended from an antique brass chain, this pendant marries feminine scalloped shapes with the natural texture of raffia.

Finish: Raffia with Antique Brass
Bulb: G9



Scalloped pendant light
MAR-PENL-RAF
Dia: 60cm H: 30cm
360 €



MALTON

With an organic shape, this fluted glass pendant is suspended from a black-bronze chain. Use it to illuminate your hallway, kitchen island or dining table.

Finish: Glass & Bronze

Bulb: E27 Squirrel cage



Round pendant light

MAL-PENS-GL-BZ

Dia: 26cm H: 28cm

235 €



HANOVER

Hanover's large steel frame features subtle Regency-inspired details and supports six light bulbs, each shrouded by an elegant tapering shade. Use it to illuminate a dining table, seating area, or staircase

Finish: Bronze

Nickel

Bulb: E14 Candle

Pendant, small
HAN-PENS-BZ
Dia: 75cm H: 251cm
525 €



Pendant, small
HAN-PENS-NI
Dia: 75cm H: 251cm
525 €



Pendant, large
HAN-PENL-BZ
Dia: 108cm H: 254cm
825 €



Pendant, large
HAN-PENL-NI
Dia: 108cm H: 254cm
825 €



EMERSON

This solid brass pendant is traditionally spun to create a textural, ribbed effect, while its raw finish takes on a unique patina over time.

- Finish: Brass
- Bulb: E27 Squirrel cage

Pendant light
EMER-PEN-RAW-BRASS
Dia: 41cm H: 10cm
315 €



SHAFTESBURY

Shaftesbury celebrates the simple beauty of hand blown glass. Opt for clear or ribbed glass, and a bronze or chrome finish for the industrial-style chain.

- Finish: Glass & Chrome
- Glass & Bronze
- Ribbed Glass & Chrome
- Ribbed Glass & Bronze
- Bulb: E27 Squirrel cage
- Cable: L: 200cm



Glass pendant, small
SHA-PEN-02-GL/GL-BZ
Dia: 25cm H: 37cm
Chrome 250 € Bronze 280 €



Ribbed glass pendant, small
SHA-PEN-250-GL/GL-BZ
Dia: 25cm H: 35cm
Chrome 265 € Bronze 290 €



Glass pendant, medium
SHA-PEN-01-GL/GL-BZ
Dia: 31cm H: 45cm
Chrome 305 € Bronze 330 €



KEATS

Keats has a wide-angled shade that's made for hanging low, where it will cast a wide pool of light over a kitchen island or dining table.

Finish: Bronze/Antique Brass
Nickel
Bulb: E27 Squirrel cage
Cable: L: 200cm



Conical pendant
KEA-PEN-298-BZ/BA
Dia: 30cm H: 31cm
135 €



Pendant, large
KEA-PENL-NK
Dia: 44cm H: 14cm
165 €



BROWNING

The Browning pendant has a simple, contemporary silhouette, with a slender metal framework.

Finish: Bronze
Bulb: E27 Squirrel cage
Cable: L: 200cm

Pendant, small
BRW-PENS-BZ
W: 36cm D: 36cm H: 30cm
425 €



Pendant, large
BRW-PENL-BZ
W: 52cm D: 52cm H: 46cm
750 €



3 bulb pendant
BRW-PEN-108-BZ
W: 36cm D: 108cm H: 30cm
895 €



Architectural lighting

Subtle spotlighting for ceilings, beams and alcoves that's powerful, but never glaring.



COATES

Versatile Coates is designed to recess into a ceiling or surface, where the adjustable aluminum reflector bulbs produce a diffused yet powerful light.

Finish: White

Bulb: Farrel bulbs (included)

AR111 recessed light, triple
COA-AR111-3LED-15D-WHD
W: 51cm D: 19cm H: 13cm



390 €

AR50 recessed light, double
COA-LIG-DBL-AR50
W: 21cm D: 12cm H: 10cm



135 €

SOANE

Soane's matt black or white surround mounts onto a ceiling or overhead surface. Use the adjustable aluminum reflector bulbs to cast targeted light exactly where you need it.

Finish: White/Black

Bulb: Farrel bulbs included

AR111 surface mounted light, single
SOA-AR111-1LED-WH/-AK
W: 13cm D: 14cm H: 20cm



135 €

AR111 surface mounted light, double
SOA-AR111-2LED-WH/AK
W: 12cm D: 32cm H: 19cm



235 €

Wall lights

From space-saving bedside lighting to atmospheric hallway illumination, wall lights are versatile tools for creating a welcoming home.



CECILE

These petite wall lights combine gathered cotton-linen shades with a serene, scalloped form and antique brass hardware.

Finish: Linen-cotton blend with Antique Brass.

Bulb: E14

NEW Gathered uplighter
CEC-WALL-UP-LIN

H: 26cm W: 27cm L: 14cm

135 €



NEW Gathered wall light
CEC-WALL-LIN

H: 19cm W: 14cm L: 24.5cm

165 €



ATHENA

Inspired by shell-like silhouettes, these petite wall light designs bring warmth, texture and a softly diffused glow.

- Finish: Rattan with Antique Brass
- Bulb: G9 (uplighter)
E14 Golf Ball (mini wall light)

Wall light uplighter
ATH-LAM-WAL-UPL-RAT
W: 27cm D: 15cm H: 19cm
135 €



Mini wall light
ATH-MIN-LAM-WAL-RAT-01
Dia: 21cm H: 36.8cm
165 €



MARINA

With an antique brass backplate and scalloped raffia shade, this petite wall light has a neat, tailored feel.

- Finish: Raffia with Antique Brass
- Bulb: G9

Scalloped wall light
MAR-LAM-WAL-RAF
W: 23cm D: 12cm H: 24cm
130 €



Marina is also available as a table lamp, see page 179.

SHAFTESBURY

Elegant and refined, with a hint of Art Deco glamour. These wall lights have ribbed glass shades that softly diffuse the light.

Finish: Bronze/Chrome

Bulb: E27 Golf ball

Ribbed wall light, Bronze

SHA-WAL-BZ-GL

Dia: 15 H: 27cm

195 €



Ribbed wall light, Chrome

SHA-WAL-NI-GL

Dia: 15 H: 27cm

165 €



KEATS

Keats features a smart conical shade in metal or glass. The wall lights are adjustable in two places, so the light is exactly where you need it.

Finish: Nickel/Bronze

Nickel with glass

Bronze with glass

Bulb: E27 Squirrel cage



Wall light, small

KEA-WAL-SIN-155-BZ-01/NK-02

Dia: 16cm H: 40cm

130 €



Wall light with glass shade, small

KEA-WAL-SIN-155-GL-BZ-01/01

Dia: 16cm H: 41cm

175 €



HANOVER

Understated and classic, Hanover's slender backplate and stem allow it to squeeze into nooks and crannies for decorative wall lighting.

Finish: Nickel/Bronze
Shade: Henry or Oliver in Harry Cloud or Clara Warm White
Bulb: E27 Golf Ball



Wall light

HAN-LAM-WAL-NI/BZ
W: 7cm D: 14cm H: 28cm

115 €

With Henry 7.5" shade
HAN-LAM-WAL/WAL-BZ-7H-WW

147 €

With Oliver 8" shade
HAN-LAM-WAL/WAL-BZ-8O-WW

148 €



BROMPTON

Brompton is adjustable in two places using traditional wingnuts and features a domed shade.

Finish: Nickel
Bulb: E27 Golf ball

Wall light, small

BRO-LAM-WAL-SML-NI
W: 14cm H: 21.5cm D: 20.5cm

125 €



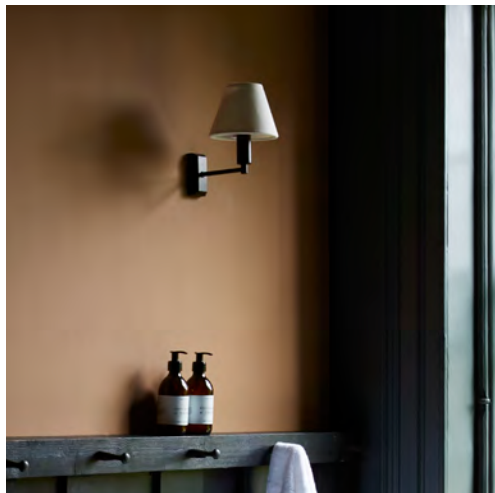
BRUNSWICK

Brunswick is subtly traditional in style, with a low arm that's designed to support a candle shade.

Finish: Chrome/Bronze

Shade: Henry or Oliver in Harry Cloud or Clara Warm White

Bulb: G9



Wall light

BRU-LIG-WAL-01/BZ-01

W: 5cm D: 18cm H: 15cm

95 €

With Henry 7.5" shade

BRU-LAM/LAM-BZ-H-WW

127 €

With Oliver 8" shade

BRU-LAM-80-WW/-BZ-80-WW

128 €



DARTMOUTH

Illuminate your garden path or porch with this discreet task light. Dartmouth is made from hardy powder-coated aluminum with an aged bronze finish.

Finish: Bronze

Bulb: MR16 GU5.3 bulb included



Outdoor mast light

DAR-LIGM-LAM

W: 8cm D: 9cm H: 13cm

165 €





ACCESSORIES

Candles & fragrance	211
Candles & holders	214
Decorative	218
Tabletop	224
Place setting	238
The flower shop	244
Scatter cushions	250
Throws	256
Rugs	258
Baskets	262
Wall art	266
Mirrors & clocks	274

Candles & holders

Scented candles, slender candlesticks, chunky pillar candles and charming tealight holders for adding subtle atmosphere.



SCENTED CANDLES

Our scented candle collection is inspired by the British coast and country and designed to bring the outdoors in.

Design details

Details: 100% natural vegan wax

Dims: Dia: 9.3cm H: 8.1cm

Burntime: Approx. 35hrs



The Rose Garden

ROS-GAR-CAN

Top notes: Rose, Bergamot, Tea Accord

Mid notes: Rose Bud, Violet, Cassis

Base notes: Cedar, Patchouli, Amber, Musk

55 €



The Lavender Field

LAV-FLD-CAN

Top notes: Agreste, Lemon, Pink Pepper, Anisic

Mid notes: Lavender, Iris, Lovage, Thyme

Base notes: Patchouli, Cedarwood

55 €



The Wild Meadow

WILD-MEAD-CAN

Top notes: Juniper Berries, Grapefruit, Buchu Leaf, Petitgrain

Mid notes: Wild Flowers, Green Grass

Base notes: Galbanum, Patchouli, Woods

55 €



The Herb Garden

HERB-GAR-CAN

Top notes: Eucalyptus, Peppermint, Rosemary, Thyme, Basil

Mid notes: Galbanum, Camphor, Pine Needle, Jasmine, Lily of the Valley

Base notes: Cedarwood, Earthy Accords, Spices

55 €



The Vegetable Patch

VEG-PTCH-CAN

Top notes: Fresh ripe tomatoes, Green tomato leaves

Mid notes: Lavender

Base notes: Woods, Oakmoss, Patchouli

55 €





NIGHTINGALE

These candles are handmade in Denmark. Each one is traditionally dipped to create the tapering shape and ensure solid colour throughout.

Design details

Finish: Saffron / Constable Green / Calico / Olive / Walnut

Details: Dia: 2cm H: 36cm
Approx. 15hrs burn time



Tapered candles, pack of four
Calico
NIGHT-TAPE-CAL

26 €



Tapered candles, pack of four
Saffron
NIGHT-TAPE-AF

26 €



Tapered candles, pack of four
Olive
NIGHT-TAPE-OLI

26 €



Tapered candles, pack of four
Constable Green
NIGHT-TAPE-CG

26 €



Tapered candles, pack of four
Walnut
NIGHT-TAPE-WAL

26 €



BLYTON

Unscented pillar candles made from mineral wax. Classic Blyton comes in different shapes and sizes and a range of core and seasonal shades.

Design details

Finish: **NEW** Walnut / Calico / Charcoal / Mist / Juniper / Saffron

7x9cm pillar candle
BLY-CAN-07X09-[]-01
Approx. 45hrs burn time
10 €



7x15cm pillar candle
BLY-CAN-07X15-[]-01
Approx. 65hrs burn time
12 €



10x10cm pillar candle
BLY-CAN-10X10-[]-01
Approx. 55hrs burn time
16 €



10x15cm pillar candle
BLY-CAN-10X15-[]-01
Approx. 80hrs burn time
20 €



MALPAS

Hand-carved from solid Makrana marble by skilled artisans, the Malpas four-wick candle and bowl bring refined elegance to any space.

Design details

Finish: Solid Makrana marble

Details: Hand-carved.

Cotton wick for consistent burn.

Four-wick candle
MAL-CAN-WH
H: 6.5cm Dia: 25cm
Approx. 18hrs burn time
140 €



Bowl
MAL-BOW-WH
H: 10cm Dia: 30cm
130 €



SOLARA

Handmade from solid brass, the Solara candle snuffer brings elegance to the simple ritual of extinguishing a flame.

Design details

Finish: Antique Brass

Details: Crafted from solid brass.
Hand-polished.



NEW Candle snuffer
SOLA-CAN-SNF-BA
H: 5cm W: 4cm L: 28cm
39 €



FLOELLA

A playful addition to tablescapes and mantelpieces, Floella is a contemporary take on the classic bobbin designs of the 17th Century.

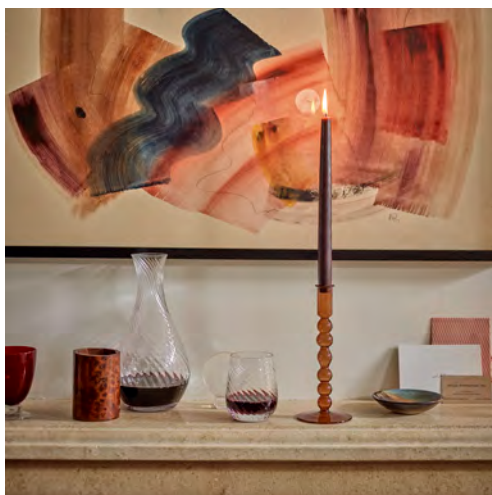
Design details

Finish: Amber / Olive glass

Candle holder, slim
Amber
FLO-CAN-HOL-AM-SLIM
Dia: 9cm H: 22cm
30 €



Candle holder, slim
Olive
FLO-CAN-HOL-OL-SLIM
Dia: 9cm H: 22cm
30 €



Embleton candle holder, small
EMB-CAN-HOL-WH-SML
Dia: 9cm H: 10cm
30 €



Embleton candle holder, large
EMB-CAN-HOL-WH-LRG
Dia: 9cm H: 18cm
39 €



Amble candle holder
AM-CAN-HOL-WH
W: 10cm D: 10cm H: 11.7cm
39 €



Suthfield tealight holder, small
SUT-TEA-01-WH
Dia: 11cm H: 8cm
26 €



Suthfield tealight holder, medium
SUT-TEA-02-WH
Dia: 13cm H: 12cm
39 €



Broadfield candle dome, small
BRO-CAN-DOM-SML
Dia: 12cm H: 16cm
33 €



Browning lantern, small
BRWN-LANT-SML-01
H: 37.9cm W: 15.5cm D: 20.5cm
95 €



Browning lantern, medium
BRWN-LANT-MED-01
H: 46.9cm W: 18.5cm D: 25.4cm
120 €



Browning lantern, tall
BRWN-LANT-TAL-01
H: 57.3cm W: 18.5cm D: 18.5cm
145 €



Heddon candlestick, small
Brass
HED-CAN-STI-04
Dia: 11cm H: 9cm
65 €



Heddon candlestick, small
Warm Black
HED-CAN-STI-SML-WB
Dia: 11cm H: 9cm
65 €



Heddon candlestick, tall
Brass
HED-CAN-STI-05
Dia: 9cm H: 14cm
70 €



Heddon candlestick, tall
Warm Black
HED-CAN-STI-TAL-WB
Dia: 9cm H: 14cm
70 €



Heddon candlestick, large
Brass
HED-CAN-STI-03
Dia: 9cm H: 19cm
75 €



Heddon candlestick, large
Warm Black
HED-CAN-STI-LRG-WB
Dia: 9cm H: 19cm
75 €





Decorative

These are the finishing touches
that bring our homes to life.

Choose from rustic vases,
unique sculptures, and photo
frames to treasure.

DECORATIVE POTS & VASES

Crafted from glazed stoneware, terracotta and marble, these decorative pieces showcase the unique techniques of skilled artisans and celebrate traditional materials and craft.

Broseley footed pot
BRL-POT-FOT-MO
Dia: 25cm H: 12cm
43 €



Broseley low pot
BRL-POT-LOW-MO
Dia: 22cm H: 10cm
39 €



Broseley pot, small
BRL-POT-SML-MO
Dia: 18cm H: 17cm
33 €



Broseley pot, large
BRL-POT-LRG-MO
Dia: 24cm H: 26cm
80 €



Haybrook vase, round
HAY-VAS-ROU-SN
Dia: 27cm H: 23cm
115 €



Haybrook vase, medium
HAY-VAS-MED-SN
Dia: 20cm H: 28cm
95 €



Haybrook vase, large
HAY-VAS-LRG-SN
Dia: 23cm H: 32cm
115 €



NEW Verwood urn vase
VER-URN-VAS-BGE
Dia: 21.5cm H: 23cm
105 €



NEW Verwood vase
VER-VAS-BGE
Dia: 24.5cm H: 28cm
95 €



Malpas bowl
MAL-BOW-WH
H: 10cm Dia: 30cm
130 €



Leven vase, round
LVN-VAS-RND-OW
Dia: 22cm H: 18cm
95 €



Leven vase, tall
LVN-VAS-TAL-OW
Dia: 22cm H: 27cm
105 €



Lavington vase, round
LVG-VAS-RND-BU
Dia: 23cm H: 22cm
130 €



Potterne vase, tall
PTN-VAS-TAL-BU
Dia: 16cm H: 30cm
105 €



Tarragon pot
TARR-POT-SML
Dia: 16cm H: 14cm
20 €



Thyme pot
THYM-POT-SML
Dia: 14cm H: 13cm
20 €



VASES

Whether filled with blooms, a candle or left empty, our glass vases are made for versatile styling.



Islington fluted vase, small

ISL-FLU-VAS-SML

Dia: 15cm H: 19cm

65 €



Islington fluted vase, medium

ISL-FLU-VAS-MED

Dia: 24cm H: 27cm

105 €



Newington hurricane vase, medium

NEI-VAS-0320

Dia: 22cm H: 32cm

105 €



Newington hurricane vase, large

NEI-VAS-0400

Dia: 27cm H: 40cm

135 €



Richmond hurricane vase, small

RIC-HUR-01

Dia: 15cm H: 33cm

80 €



Richmond hurricane vase, medium

RIC-HUR-02

Dia: 19cm H: 35cm

95 €



Raynes vase, medium

RAY-HUR-VAS-MED

Dia: 14cm H: 22cm

60 €



Raynes vase, large

RAY-HUR-VAS-LRG

Dia: 18cm H: 30.5cm

95 €



Serena vase, small

SER-GRE-VAS-SML

Dia: 18cm H: 21cm

55 €



Serena vase, large

SER-GRE-VAS-LRG

Dia: 21cm H: 32cm

80 €





OBJETS

Our sculptures take their forms from nature and architecture, in a spectrum of textures and shades that bring individual character to surfaces around the home.



Matlock book ends
MATL-BK-MARB-GN
W: 6.5cm Dia: 9cm H: 15cm
160 €



Malborough book ends,
curve
MAL-BK-MARB-01
W: 20cm D: 5cm H: 12.5cm
80 €



Malborough book ends,
round
MAL-BK-MARB-02
W: 14cm D: 4cm H: 1.5cm
80 €



Suthfield artichoke, small
SUT-ORN-01
Dia: 15cm H: 21cm
55 €



Suthfield artichoke, large
SUT-ORN-02
Dia: 18cm H: 28cm
75 €



Hickstead horse, small
HICK-HOR-SML
W: 12cm D: 30cm H: 24cm
60 €



Gosse seahorse, small
GOS-SEA-SML
W: 11cm D: 14cm H: 31cm
39 €

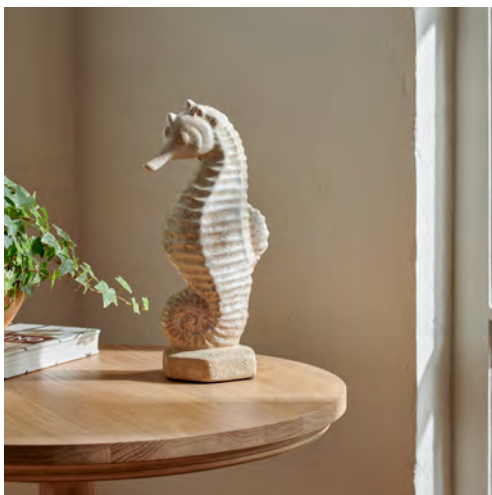
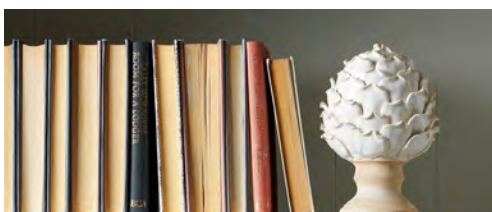


PHOTO FRAMES

Our considered frames provide a fitting home for treasured photographs and stylish prints.



NEW Montpellier frame, 4x6

Light Green

MON-FRA-4X6-LGN

W: 14cm H: 19cm D: 1cm

33 €



NEW Montpellier frame, 4x6

Pink

MON-FRA-4X6-PP

W: 14cm H: 19cm D: 1cm

33 €



Montpellier frame, 4x6

Green & White

MON-FRA-4X6-GN-WH

W: 14cm H: 19cm D: 1cm

33 €



Montpellier frame, 5x7

Blue

MON-FRA-5X7-BU

W: 16cm H: 21cm D: 1cm

47 €



Porter photo frame, 4x6

POR-FRA-4X6

W: 17cm H: 22cm D: 2cm

39 €



Porter photo frame, 6x8

POR-FRA-6X8

W: 22cm H: 27cm D: 2cm

55 €



Porter photo frame, 8x10

POR-FRA-8X10

W: 27cm H: 32cm D: 2cm

65 €



Tabletop & serveware

Sitting around the table will always feel like a special occasion with our collection of crockery and serving pieces.



AMBERLEY

Amberley's natural silhouette reflects the artistry of skilled craftspeople in Portugal. Each piece is crafted from hardwearing stoneware and finished with a hand-applied reactive glaze, resulting in a unique, yellow-speckled finish.

Mug

Reactive Yellow

AMB-MUG-YE

W: 13.5cm D: 9cm H: 9.2cm

24 €



Cereal bowl

Reactive Yellow

AMB-BOW-YE

Dia: 16cm H: 8.2cm

22 €



Dipping bowl

Reactive Yellow

AMB-DIP-BOW-YE

W: 17cm H: 3cm D: 9.5cm

16 €



Pasta bowl

Reactive Yellow

AMB-PAS-BOW-YE

Dia: 22.5cm H: 5cm

26 €



Bread platter

Reactive Yellow

AMB-BRE-PLA-YE

W: 23.5cm H: 3.2cm D: 12.5cm

26 €



Salad plate

Reactive Yellow

AMB-SAL-PLA-YE

Dia: 22cm H: 2cm

22 €



Oval platter

Reactive Yellow

AMB-OVA-PLA-YE

W: 34cm D: 16.5cm H: 4cm

39 €



Dinner plate

Reactive Yellow

AMB-DIN-PLA-YE

Dia: 28.5cm H: 2.4cm

26 €



Serving bowl

Reactive Yellow

AMB-SER-BOW-YE

Dia: 27cm H: 12cm

80 €



Round platter

Reactive Yellow

AMB-ROU-PLA-YE

Dia: 36cm H: 4cm

80 €



Jug

Reactive Yellow

AMB-JUG-YE

W: 19.5cm D: 13cm H: 18cm

80 €



MELBURY

Handcrafted from durable stoneware in Portugal, Melbury is finished with a hand-painted rustic navy stripe, adding timeless, artisanal charm to your kitchen.

Storage jar, small
MELB-JAR-SML-BU
Dia: 12.1cm H: 12.1cm
39 €



Storage jar, large
MELB-JAR-LRG-BU
Dia: 18.8cm H: 20.9cm
60 €



Spoon rest
MELB-SPN-RST-BU
Dia: 12cm H: 1.9cm
14 €



Utensil pot
MELB-UTN-POT-BU
W: 12.9cm D: 13.1cm H: 18.3cm
39 €



Pouring bowl, small
MELB-POUR-BOW-SML-BU
W: 18cm D: 19.3cm H: 8.5cm
39 €



Pouring bowl, medium
MELB-POUR-BOW-MED-BU
W: 24.7cm D: 26.5cm H: 9.3cm
55 €



Pouring bowl, large
MELB-POUR-BOW-LRG-BU
W: 30.2cm D: 33.4cm H: 10cm
65 €



BRAMLEY

Crafted from durable stoneware in Portugal, these baking essentials feature a hand-applied reactive glaze, creating a unique speckled effect on each piece.

Pie dish
BRAM-PIE-DISH-RW
Dia: 26.7cm H: 5.5cm
39 €



Baking dish, small
BRAM-BAK-DISH-SML-RW
W: 17.1cm D:24cm H: 7cm
33 €



Baking dish, medium
BRAM-BAK-DISH-MED-RW
W: 21.3cm D:34.60cm H: 7.5cm
47 €



Baking dish, large
BRAM-BAK-DISH-LRG-RW
W: 25.9cm D:43.70cm H: 8.6cm
60 €



Pouring cups, set of three
BRAM-POUR-CUP-RW
W: 15.3cm D: 11.8cm H: 6.5cm
39 €



Butter dish
BRAM-BUT-DISH-RW
W: 12.5cm D:19cm H: 8cm
39 €



Lemon squeezer
BRAM-LEM-SQU-RW
W: 17.4cm D:13.10cm H: 8.5cm
26 €



SENNEN

Crafted from stoneware, Sennen's organic, ruffled silhouette and hand-applied reactive glaze bring texture to any table setting.



Mug

Vintage White
SEN-MUG-OW
W: 13cm D: 8cm H: 9cm
20 €



Cereal bowl

Vintage White
SEN-BOW-SO4-OW
Dia: 15cm H: 9cm
20 €



Salad bowl

Sand
SEN-BOW-SAL-SD
Dia: 27cm H: 12cm
80 €



Side plate

Vintage White
SEN-PLA-SID-SO4-OW
Dia: 22cm H: 3cm
20 €



Round platter

Sand
SEN-ROU-SER-PLA-SD
Dia: 39cm H: 9cm
135 €



Dinner plate

Vintage White
SEN-PLA-DIN-SO4-OW
Dia: 28cm H: 4cm
26 €



Bread platter

Sand
SEN-BRE-PLA-SD
W: 12cm D: 24cm H: 4cm
30 €



Pasta bowl

Vintage White
SEN-BOW-PAS-SO4-OW
Dia: 23cm H: 7cm
26 €



Dipping bowl

Sand
SEN-DIP-BOW-SD
W: 7cm D: 16cm H: 3cm
16 €



CLOVELLY

Clovelly stoneware evokes a laidback, contemporary feel with its organic shapes and beautifully textured finish.



Cereal bowl

Reactive White

CLOV-CB-RW

Dia: 18cm H: 6cm

16 €



Pasta bowl

Reactive White

CLOV-PB-RW

Dia: 24cm H: 5cm

20 €



Side plate

Reactive White

CLOV-SP-RW

Dia: 21cm H: 3cm

16 €



Dinner plate

Reactive White

CLOV-DP-RW

Dia: 27cm H: 4cm

20 €



Serving board

Reactive White

CLO-SER-BOA-RW

W: 18cm D: 32cm H: 1cm

33 €



BOWSLEY

Each Bowsley piece features a delicate beaded border and ribbed surface. The white glaze is picked out by soft grey details for a gently distressed look.



Mug
BOW-01-MUG-WH
W: 9cm D: 13cm H: 11cm
12 €



Milk jug
BOW-01-MIL-JUG-WH
W: 9cm D: 14cm H: 9cm
12 €



Jug, medium
BOW-01-JUG-MED-WH
W: 11cm D: 17cm H: 17cm
26 €



Bowl
BOW-01-BOW-WH
Dia: 15cm H: 8cm
16 €



Jug, tall
BOW-01-JUG-TALL-WH
W: 14cm D: 22cm H: 22cm
39 €



Salad bowl
BOW-01-BOW-SAL-WH
Dia: 30cm H: 10cm
47 €



Cake stand
BOW-01-CAK-STA-WH
Dia: 30cm H: 10cm
47 €



Pasta bowl
BOW-01-BOW-PAS-WH
Dia: 29.5cm H: 4.8cm
20 €



Platter
BOW-01-CAK-PLA-WH
Dia: 31cm H: 1cm
33 €



Side plate
BOW-01-PLA-SID-WH
Dia: 20cm H: 2cm
16 €



Sugar pot
BOW-01-POT-SUG-WH
L: 14cm W: 8cm H: 12cm
26 €



Dinner plate
BOW-01-PLA-DIN-WH
Dia: 30cm H: 3cm
20 €



Teapot
BOW-01-POT-TEA-WH
L: 27cm W: 16cm H: 16cm
39 €



MOLLAND

Made in Portugal from durable stoneware, the Molland collection is hand-finished with a reactive glaze in a unique flax blue tone.

NEW Cup & saucer
MOLL-TEA-SAU-BU
H: 7cm Dia: 16cm
30 €



Espresso mug
MOLL-ESP-MUG-BU
W: 9cm D: 7cm H: 6cm
16 €



Cappuccino mug
MOLL-CAP-MUG-BU
W: 13cm D: 8cm H: 9cm
26 €



MALBOROUGH

Crafted from solid marble, Malborough's unique veining and grey and brown ripples showcase the natural beauty of this stone.

Dipping bowls, set of three
Brown marble
MAL-DIP-MARB-01
Dia: 6cm H: 3cm
Dia: 8cm H: 4cm
Dia: 10cm H: 5cm
65 €



Serving board, round
Brown marble
MAL-SRV-MARB-01
Dia: 35cm H: 2cm
90 €



Serving board, oval
Brown marble
MAL-SRV-MARB-02
L: 35cm W: 19cm H: 2cm
90 €



Cake stand
Brown marble
MAL-CAK-MARB-01
Dia: 30cm H: 13cm
115 €



Footed bowl
Brown marble
MAL-FTPLT-MARB-01
Dia: 28cm H: 17cm
135 €



STORAGE & ORGANISATION

Timber and rattan trays for carrying drinks out to the garden, sturdy chopping blocks and serving boards, and lidded storage jars for keeping things neat and tidy.

Ashcroft bowl
ASC-BOW-WH
Dia: 30cm H: 13cm
60 €



Ashcroft bread basket, small
ASC-BBKT-40X18-WH
W: 40cm D: 18cm H: 8cm
43 €



Ashcroft tray
ASC-TRA-24X14-WH
W: 25cm D: 14cm H: 5cm
26 €



Ashcroft square tray
ASC-TRA-53X53-WH
W: 53cm D: 53cm H: 8cm
95 €



Orford rolling pin
ORF-PIN-OAK-IN-01
Dia: 4cm L: 40cm
60 €



Ashcroft tray, small
ASC-TRA-55X36-WH
W: 55cm D: 36cm H: 8cm
75 €



NEW Orford chopping board
ORF-BOA-OAK-IN-02
W: 52cm D: 41cm H: 5cm
240 €



Ashcroft tray, medium
ASC-TRA-64X43-WH
W: 64cm D: 43cm H: 9cm
95 €



Orford chopping board
ORF-BOA-OAK-IN-01
W: 40cm D: 55cm H: 4cm
195 €



Ashcroft butler's tray
ASC-TRA-TAB-WH
L: 61cm W: 41cm H: 9cm
150 €



Borough long oak chopping block
BOU-LON-OAK-01
W: 18cm D: 52cm H: 2cm
95 €



Henley round tray
Classic Oak
HEN-TRA-01-IN
Dia: 43cm H: 5cm
210 €



Borough oak chopping block
BOU-REC-OAK-01
W: 30cm D: 48cm H: 2cm
105 €



Terence butler's tray
Natural Oak
TER-TRA-REC-IN
W: 41cm D: 61cm H: 9cm
195 €



Lana bon bon bowl
LAN-BON-BOWL
Dia: 18cm H: 14cm
39 €



Lana trifle bowl
LAN-TRI-BOW-LRG
Dia: 25cm H: 22cm
75 €



Belmont glass jar, small
BEL-JAR-0170
Dia: 12cm H: 23cm
33 €



Belmont glass jar, medium
BEL-JAR-0180
Dia: 22cm H: 30cm
65 €



Wingfield glass jar, small
WIG-JAR-SML-120
Dia: 11cm H: 12cm
30 €



Wingfield glass jar, medium
WIG-JAR-MED-135
Dia: 12cm H: 14cm
33 €



Wingfield glass jar, tall
WIG-JAR-TAL-265
Dia: 11cm H: 27cm
47 €



Broadfield glass dome
BRO-DOM-01
Dia: 26cm H: 19cm
75 €



Lewes lidded jar, small
LEW-JAR-SM
Dia: 12cm H: 11cm
26 €



Lewes lidded jar, medium
LEW-JAR-MED
Dia: 12cm H: 15cm
30 €



Lewes lidded jar, large
LEW-JAR-XL
Dia: 12cm H: 22cm
33 €



GLASS & BARWARE

Our collection includes glassware for every occasion, from simple Hoxton to decadent Bethnal, while statement coolers and carriers will be the envy of guests.

Bethnal bistro glass,
set of two
BETH-GLS-BG-SO2
Dia: 9cm H: 12cm
43 €



Bethnal champagne coupe,
set of two
BETH-GLS-CC-SO2
Dia: 10cm H: 21cm
43 €



Lydford wine bucket, medium
LYF-WIN-BUC-01
W: 26cm D: 21cm H: 23cm
175 €



Islington tumbler glasses,
set of four
ISL-TUM-GLA-S04
Dia: 9cm H: 11cm
90 €



Islington highball,
set of four
ISL-HI-GLA-S04
Dia: 8cm H: 15cm
90 €



Islington white wine glasses,
set of four
ISL-WHI-GLA-S04
Dia: 8cm H: 21cm
105 €



Islington red wine glasses,
set of four
ISL-RED-GLA-S04
Dia: 9cm H: 22cm
105 €



Islington champagne flutes,
set of four
ISL-CHA-FLU-S04
Dia: 7cm H: 24cm
95 €



Islington carafe
ISL-CAR-GLA-01
Dia: 14cm H: 27cm
60 €



Lydford wine bucket, large
LYF-WIN-BUC-02
W: 36cm D: 30cm H: 20cm
240 €







Greenwich white wine glasses, set of six
GRE-WH-WIN-SO6
Dia: 9cm H: 16cm
95 €



Greenwich red wine glasses, set of six
GRE-RD-WIN-SO6
Dia: 9cm H: 17cm
95 €



Greenwich champagne flutes, set of six
GRE-CHA-FLU-SO6
Dia: 7cm H: 20cm
90 €



Hoxton small water glasses, set of six
HOX-WA-TUM-SO6
Dia: 9cm H: 10cm
60 €



Hoxton tall water glasses, set of six
HOX-WA-GLA-SO6
Dia: 8cm H: 15cm
65 €



Hoxton white wine glasses, set of six
HOX-WH-WIN-SO6
Dia: 9cm H: 22cm
90 €



Hoxton red wine glasses, set of six
HOX-RD-WIN-SO6
Dia: 8cm H: 22cm
90 €



Hoxton champagne flutes, set of six
HOX-CHA-FLU-SO6
Dia: 7cm H: 23cm
80 €



Primrose glassware, set of four
PRIM-REC-GLA-SO4
Dia: 8.5cm H: 10cm
55 €



Primrose carafe
PRIM-REC-CAR-GLA
Dia: 13cm H: 23cm
39 €



Ella tumbler, Saffron
ELL-GLA-TUM1-AF
Dia: 8.6cm H: 10cm
12 €



Ella tumbler, Forest
ELL-GLA-TUM1-FR
Dia: 9cm H: 10cm
12 €



Ella tumbler, Rose
ELL-GLA-TUM1-RS
Dia: 9cm H: 10cm
12 €



Ella glass jug
ELL-JUG-01-CL
Dia: 11cm H: 25cm
33 €



Pimlico tapered jug & stirrer
PIM-TAP-JUG-STI
Dia: 13cm H: 30cm
65 €



Ashcroft jug, small
ASC-WAT-JUG-SML-WH
Dia: 16cm H: 27cm
115 €





Place setting

Having a trusty collection of place settings means you'll always be ready to serve in style, from relaxed gatherings to more formal dinner parties.

TABLE LINEN

Tablecloths, runners, placemats and napkins for protecting your tabletop and creating a welcoming, layered scheme.

NEW Acorn napkins, set of four

FVS-NAP-SO4-BO

L: 45cm W: 45cm

80 €



NEW Mabel placemats, set of four

MBL-PLA4-OL

H: 1.5cm W: 35cm L: 50cm

95 €



Fife napkins, set of four

FIFE-NAP-SO4-GN

W: 45cm H: 45cm

70 €



Fife tablecloth

FIFE-TCLO-250/350-GN

250cm x 175cm 185 €

350cm x 175cm 225 €



Fife table runner

FIFE-RUN-350-GN

W: 50cm H: 350cm

120 €



Maeve napkins, set of four

MAE-NAP-SO4-OV

L: 45cm W: 45cm

75 €



Maeve tablecloth

MAE-TCLO-250/350-OV

250cm x 175cm 185 €

350cm x 175cm 250 €



Maeve table runner

MAE-RUN-250/350-OV

250cm x 50cm 95 €

350cm x 50cm 130 €



Neptune kitchen apron

NEPT-KIT-APR-AK

W: 85cm H: 80cm

115 €



Neptune kitchen towel

Black or Red

NEPT-KIT-TOW-AK/RD

W: 45cm H: 75cm

47 €



Quinn kitchen towel

Natural or White

QUN-STR-KIT-TOW-NA/WH

W: 45cm H: 70cm

39 €



Emily napkins, set of six

Salt

EMI-NAP6-ST

L: 45cm W: 45cm

80 €



Emily linen tablecloth

Salt

EMI-TCLO-350-ST

L: 350cm W: 175cm

225 €



PLACEMATS

Placemats not only protect your dining table, but they are also a key ingredient in creating a cohesive tablescape. Choose between sturdy woven designs and soft fabric ones.

NEW Mabel placemats, set of four
MBL-PLA4-OL

H: 1.5cm W: 35cm L: 50cm

95 €



Ashbourne round placemats, set of four

Rattan

ASH-RAT-ROU-NA

W: 30cm Dia: 30cm

95 €



Ashcroft scalloped edge round placemats, set of six

Silver Reed hand-woven rattan

ASC-SCA-PLA-ROU

Dia: 35cm H: 1cm

155 €



Ashcroft small round placemats, set of six

Silver Reed hand-woven rattan

ASC-PLA-29X29-WH

Dia: 29cm H: 1cm

130 €



Ashcroft rectangular placemats, set of six

Silver Reed hand-woven rattan

ASC-PLA-REC-WH

W: 42cm D: 30cm H: 1cm

180 €



Ashcroft serving mats, set of two

Silver Reed hand-woven rattan

ASC-TRI-MED-WH

W: 45cm D: 33cm H: 1cm

90 €



Ashcroft round coasters, set of six

Silver Reed hand-woven rattan

ASC-COA-RND-WH

Dia: 12cm H: 6cm

60 €



Ashcroft napkin rings, set of six

Silver Reed hand-woven rattan

ASC-NAP-RND-WH

Dia: 6cm H: 4cm

30 €



NEW Carnaby napkin rings, set of four

Merlot

CBY-GLA-NAP-RN-MLT

H: 2cm Dia: 4.5cm

24 €







CUTLERY

Smart and classic through to relaxed, colourful designs. Our cutlery comes in 24 or 36 piece sets, while the carriers and organisers help to keep things neat.



NEW Orford salad servers
ORF-SDS-OAK-IN
H: 31cm W: 7cm
20 €



Salcombe 24pc cutlery set
Saffron Stripe
SAL-CUT-24PC-AF
L: 26cm W: 19cm H: 6cm
155 €



Salcombe 24pc cutlery set
Navy Stripe
SAL-CUT-24PC-NY
L: 26cm W: 19cm H: 6cm
160 €



Handsworth 24pc cutlery set
Olive/Salt
HAN-CUT-01-24PC-OL/ST
L: 26cm W: 19cm H: 6cm
135 €



Thaxted 36pc cutlery set
THA-CUT-36-ST
L: 25cm W: 29cm H: 8cm
265 €



Stuart 36pc cutlery set
Presented in a velvet-lined box
STU-CUT-36PC-ST
L: 24cm W: 37cm H: 5cm
495 €



Ashcroft cutlery & condiment
basket
Silver Reed hand-woven rattan
ASC-CCB-WH
W: 20cm D: 20cm H: 30cm
60 €



Ashcroft cutlery tray
Silver Reed hand-woven rattan
ASC-CTRA-36X31-WH
W: 31cm D: 36cm H: 6cm
60 €



The flower shop

Here you will find everything from
gorgeous blooms to potted succulents.

Highly realistic, with no care and
maintenance necessary.



FLORAL STEMS

Our single stem faux flowers can be styled individually or grouped together in a bouquet.

NEW Hydrangea stem

Light Brown
HYD-FLO-LBWN
Dia: 21cm H: 53cm
30 €



Hydrangea stem

White
HYD-FLO-084-WH
Dia: 22cm H: 84cm
30 €



Potted hydrangea, small

White
HYD-POT-WH
Dia: 20cm H: 45cm
115 €



NEW Sunflower stem

Brown
SUNF-STM-BWN
Dia: 18cm H: 76cm
26 €



NEW Sunflower stem

Light Brown
SUNF-STM-LBWN
Dia: 18cm H: 76cm
26 €



Ranuncula

Warm Pink
RAN-STM-WP
Dia: 17cm H: 57cm
20 €



Peony bundle

White
PEO-BUN-DU-WH
Dia: 20cm H: 64cm
60 €



Peony stem

Burgundy
PEO-SPR-BG
Dia: 15cm H: 79cm
33 €



Foxglove

White
FOX-FLO-090-WH
Dia: 28cm H: 90cm
26 €



Snowball

White
SNO-FLO-084-WH
Dia: 24cm H: 84cm
26 €



Rose stem

Yellow
ROS-FLO-YE
Dia: 16cm H: 63cm
27 €



Rose stem

Pink
ROS-FLO-PP
Dia: 16cm H: 63cm
27 €



Rose stem

White
ROS-FLO-WH
Dia: 18cm H: 91cm
27 €



FLORAL SPRAYS

Enjoy beautiful arrangements all year round with our voluminous lifelike flowers.



Mimosa spray

Yellow

MIM-STE-YEL

Dia: 37cm H: 122cm

33 €



Wisteria spray

White

WIS-SPR-WH

Dia: 26cm H: 110cm

60 €



Peony spray

Pink

PEO-SPR-PP

Dia: 33cm H: 112cm

55 €



Ranuncula bunch

White

RAN-BUN-WH

Dia: 20cm H: 64cm

60 €



Berry flower spray

Pink

BER-FLO-SPR-PP

Dia: 45cm H: 109cm

33 €



Magnolia branch

White

MAG-FLO-TRE-090-WH

Dia: 25cm H: 90cm

26 €



Daisy spray

Brown

DSY-SPR-BWN

Dia: 41cm H: 102cm

30 €



Magnolia spray

Green

MAG-FLO-TRE-103-GN

Dia: 20cm H: 103cm

60 €



Hellebore spray

Burgundy

HEL-SPR-01-BG

Dia: 20cm H: 56cm

20 €





FOLIAGE

Twigs and greenery for adding depth and contrast to bouquets, or for displaying alone for pared-back décor.

NEW Eucalyptus wreath

Light Russet

EUC-WRE-LRR

Dia: 61cm H:19cm

195 €



NEW Eucalyptus spray

Brown

EUC-SPR-BWN

Dia: 30cm H: 96cm

40 €



NEW Eucalyptus spray

Burgundy

EUC-SPR-BG

Dia: 20cm H: 76cm

30 €



Eucalyptus mini spray

Russet

EUC-MIN-SPR-RR

Dia: 20cm H: 99cm

20 €



Eucalyptus berry spray

Dark Green

EUC-BER-SPR-DRG

Dia: 78cm H: 121cm

33 €



Eucalyptus spray

Russet

EUC-SPR-RR

Dia: 71cm H: 109cm

47 €



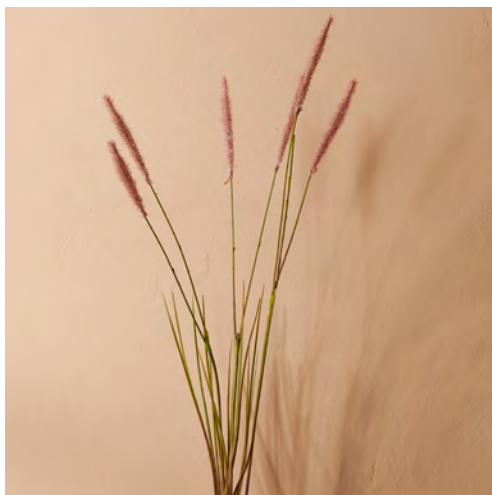
Eucalyptus red box spray

Russet

EUC-RED-BOX-SPR-RR

Dia: 38cm H: 119cm

60 €



Queen Anne's Lace

Pink

QUE-ANN-LCE-SPRY-PNK

Dia: 45cm H: 97cm

30 €



Wild stem

Pink

WLD-STE-PNK

Dia: 64cm H: 101cm

20 €



NEW Rose leaf spray

Soft Pink

ROS-LEA-SPR-TP

Dia: 28cm H: 116cm

43 €

**NEW Leaf spray**

Burgundy

LEA-SPR-BG

Dia: 23cm H: 98cm

26 €

**NEW Maple leaf twig**

Burgundy

MAP-LEA-BG

Dia: 20cm H: 76cm

27 €

**Pittosporum spray**

PIT-FLO-088

Dia: 12cm H: 88cm

26 €

**Hops bunch**

Green

HOP-BUN-GR-WH

Dia: 20cm H: 83cm

60 €

**Rowan Blossom**

White

RWN-BLS-STM-WH

Dia: 45cm H: 90cm

26 €

**Sage leaf spray**

Green

SAG-LEA-01-GN

Dia: 15cm H: 71cm

16 €

**Berry twig**

Blue

BER-TWI-BU

Dia: 14cm H: 56cm

12 €

**Berry Spray**

White

BER-SPR-01-WH

Dia: 30cm H: 107cm

20 €

**Olive spray**

Green

OLI-SPR-GN

Dia: 70cm H: 93cm

20 €

**Spiraea spray**

Yellow

SPIR-SPR-YE

Dia: 80cm H: 121cm

20 €





Cushions

Scatter cushions are an effective tool for bringing pattern and colour to a space. Ours spotlight a wide range of beautiful fabrics, from printed linens to bouclé.

WOOL

From Harris Tweed to simple stripes, all of our natural wool cushions are luxuriously soft thanks to their fine, long fibers.

Florence 35x55cm
Harris Tweed Check
FLO-CUS-35X55-HRSFF
135 €



Adie 45x45cm
Natural
ADIE-CUS-45X45-NA
100 €



Adie 35x55cm
Natural
ADIE-CUS-35X55-NA
96 €



Myra 45x45cm
Natural
MYR-CUS-45X45-NA
100 €



Myra 35x55cm
Natural
MYR-CUS-35X55-NA
96 €



SHEEPSKIN

Tussock brings the luxurious softness of our sheepskin rugs to a scatter cushion. The New Zealand wool has a signature curl and oatmeal colouring, instantly bringing cosy, chalet style to a living space.

Tussock 45x45cm
Pearl
TUS-CUS-45X45-RL
260 €



Tussock 57x57cm
Pearl
TUS-CUS-57X57-RL
440 €



LINEN

From raw fringed edges and Oxford borders to our large floral patterns, we have linen cushions to suit every taste.

Beatrix 35x55cm
Harry Mineral
BEA-CUS-35X55-HRYMIN
95 €



Beatrix 35x55cm
Harry Mortar
BEA-CUS-35X55-HRYTR
95 €



Beatrix 45x45cm
Harry Fawn
BEX-CUS-45X45-HRYFA
110 €



Beatrix 45x45cm
Chloe Lead
BEA-CUS-45X45-CHLLD
130 €



Beatrix 45x45cm
Harry Storm
BEA-CUS-45X45-HRYTM
110 €



Beatrix 45x45cm
Signature Linen Moss
BEA-CUS-45X45-CHLMO
130 €



Beatrix 57x57cm
Chloe Ash
BEA-CUS-57X57-CHLAH
195 €



Beatrix 57x57cm
Signature Linen Trellis
BEA-CUS-57X57-CHLTS
195 €



Grace 45x45cm
Orla Moss
GRA-CUS-45X45-ORLMO
95 €



Grace 45x45cm
Orla Saffron
GRA-CUS-45X45-ORLAF
95 €



Grace 45x45cm
Orla Trellis
GRA-CUS-45X45-ORLTS
95 €



Isabelle 35x55cm
Harry Apricot
ISA-CUS-35X55-HRYAC
110 €



Isabelle 35x55cm
Harry Rosehip
ISA-CUS-35X55-HRYRH
110 €



Isabelle 35x55cm
Signature Linen York Rose
ISA-CUS-35X55-CHLYR
130 €



Isabelle 45x45cm
Chloe Denim
ISA-CUS-45X45-CHLDN
135 €



Isabelle 45x45cm
Harry Cloud
ISA-CUS-45X45-HRYCD
115 €



Isabelle 45x45cm
Signature Linen Moss
ISA-CUS-45X45-CHLMO
135 €



Grace 57x57cm
Emma Mustard
GRA-CUS-57X57-EMMMS
140 €



Grace 57x57cm
Emma Sage
GRA-CUS-57X57-02-EMMAE
140 €



Grace 57x57cm
Emma Teal
GRA-CUS-57X57-EMMTE
140 €



Grace 57x57cm
Emma Dove
GRA-CUS-57X57-EMMDV
145 €



Grace 55x35cm
Samuel Rust
GRA-CUS-55X35-SMURT
66 €



Grace 45x45cm
Orla Apricot
GRA-CUS-45X45-ORLAC
95 €



Grace 45x45cm
Orla Flax Blue
GRA-CUS-45X45-ORLFB
95 €



OUTDOOR CUSHIONS

Made from durable materials, these cushions are a simple way to add comfort, pattern, and texture to garden spaces.

Fine Stripe cushion
Blue
FNE-STR-CUS-43X43-BL
W: 43cm H: 43cm
95 €



Fine Stripe cushion
Green
FNE-STR-CUS-55X35-GR
W: 55cm H: 35cm
115 €



Orissa floor cushion
Natural
ORSA-FLR-CUS-60X60-NA
W: 60cm H: 60cm D: 20cm
195 €



Wide Stripe cushion
Green
WDE-STR-CUS-43X43-GR
W: 43cm H: 43cm
95 €



Wide Stripe cushion
Blue
WDE-STR-CUS-55X35-BL
W: 55cm H: 35cm
115 €



COTTON

Traditionally block-printed and embroidered by skilled artisans in India, our collection of patterned, feather-filled cushions adds a touch of subtle colour to any room.

Dora 45x45cm
Green
DOR-CUS-45X45-GN
80 €



Dora 35x55cm
Green
DOR-CUS-35X55-GN
65 €



Frida 45x45cm
Natural
FRI-CUS-45X45-GN
95 €



Frida 35x55cm
Natural
FRI-CUS-35X55-GN
80 €



Eve 45x45cm
Navy
EVE-CUS-45X45-NY
80 €



Clover 45x45cm
Navy
CLV-CUS-45X45-NY
90 €



Mae 45x45cm
Mustard
MAE-CUS-45X45-MS
80 €



Florrie 55x55cm floor cushion
Navy
FLOR-FLR-CUS-55X55-NY
90 €



VELVET

Woven from cotton with a touch of polyester for added durability, our luxurious velvet cushions are available in rich jewel-like tones.



Florence 45x45cm
Isla Ermine
FLO-CUS-45X45-ER-01
90 €



Florence 45x45cm
Isla Otter
FLO-CUS-45X45-ISLOT-01
90 €



Florence 45x45cm
Isla Finch
FLO-CUS-45X45-ISLFI-01
90 €



Florence 45x45cm
Isla Old Rose
FLO-CUS-45X45-ISL-OD
90 €



Florence 45x45cm
Isla Fox
FLO-CUS-45X45-ISLFO-01
90 €



Florence 45x45cm
Isla Steel
FLO-CUS-45X45-ISL-EE
90 €



Florence 45x45cm
Isla Kingfisher
FLO-CUS-45X45-ISLKI-01
90 €



Grace 57x57cm
Isla Kingfisher
GRA-CUS-57X57-ISLKI-01
135 €



Florence 45x45cm
Isla Mallard
FLO-CUS-45X45-ISLMD-01
90 €



Grace 57x57cm
Isla Mallard
GRA-CUS-57X57-IS-
LMD-01
135 €





Throws

Woollen throws for layering over the bed or sofa in winter and wrapping up in on late summer evenings.

Hetton throw, Rust

80% Polyacrylic, 10% wool,
5% alpaca wool, 5% Viscose
HET-THR-RT
L: 200cm W: 140cm

245 €

**Hetton throw, Chestnut**

80% Polyacrylic, 10% wool,
5% alpaca wool, 5% Viscose
HET-THR-CE
L: 200cm W: 140cm

245 €

**Otterburn throw, Burnt Sienna**

45% lambswool 55% merino
OTB-THR-NE
L: 220cm W: 140cm

290 €

**Bailey throw, Constable Green**

100% wool
BAI-THR-CG
L: 220cm W: 140cm

295 €

**Riley throw, Teal**

100% cotton
RIL-THR-220X260-LG-TE
W: 260cm L: 220cm

370 €

**Denton throw, Shingle**

100% cotton
DNT-THW-HG
L: 170cm W: 130cm

210 €

**Sudbury throw, Natural**

100% merino lambswool
SUD-THR-NA
L: 220cm W: 145cm

345 €

**Cromer throw, Alpine**

55% lambswool 45% merino
lambswool
CRO-THR-AL
L: 220cm W: 140cm

330 €



The image shows a warm and inviting living room. A light-colored sofa is positioned in the upper half of the frame, adorned with several decorative cushions. One cushion features a bold orange and cream geometric pattern, while others have stripes and small green dots. In the foreground, a large, rectangular rug with a dense, textured weave in shades of beige and cream covers the floor. A portion of a light-colored wooden coffee table is visible on the left. The floor beneath the rug is made of light wood planks. The overall atmosphere is one of comfort and natural elegance.

Rugs

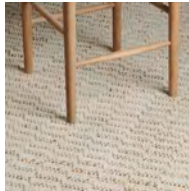
Rugs are essential for harmonious interiors, warming up stone and timber flooring while injecting colour and pattern. Our collection spans plush sheepskins, geometric flatweaves, natural jutes and woollen kilims.

NEW Carradale doormat

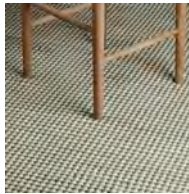
100% jute
CRD-DMT-[]-NA
60x90cm 75 €
90x120cm 120 €

**Sonning, Beige**

59% jute, 23% wool,
13% cotton, 5% polyester
SON-RUG-[]-BGE
170x240cm 390 €
200x300cm 525 €

**Marlow, Green**

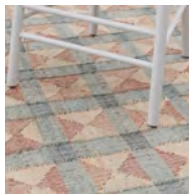
100% wool
MRLW-RUG-[]-GR
170x240cm 465 €
200x300cm 675 €

**Taplow, Natural**

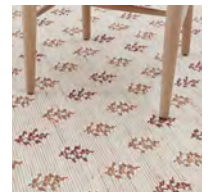
100% jute
TPLW-RUG-[]-NA
170x240cm 390 €
200x300cm 525 €

**Calan, Teal**

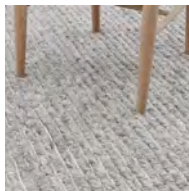
44% jute, 35% wool,
10% cotton, 11% polyester
CAL-RUG-[]-TE
170x240cm 675 €
200x300cm 925 €

**Rona, Burnt Sienna**

44% jute, 35% wool,
10% cotton, 10% polyester,
1% Viscose
RON-RUG-[]-NE
170x240cm 675 €
200x300cm 925 €

**Laith, Grey**

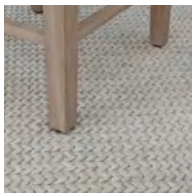
98% New Zealand wool,
1% nylon, 1% polyester
LAI-RUG-[]-GR
170x240cm 795 €
200x300cm 1,195 €
300x400cm 1,850 €

**Arran, Rust**

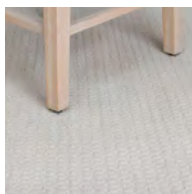
41% jute, 38% wool,
19% cotton, 2% nylon
ARR-RUG-[]-RT
170x240cm 675 €
200x300cm 925 €



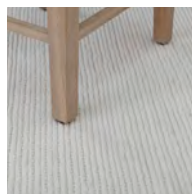
Elgin rug, Birch
 60% viscose 40% cotton
 ELN-RUG-[]-BC
 170x240cm 875 €
 200x300cm 1,295 €



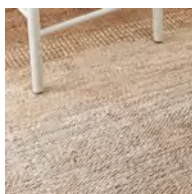
Longford rug, Oatmeal
 90% wool, 10% cotton
 LNG-RUG-[]-OA
 170x240cm 550 €
 200x300cm 775 €



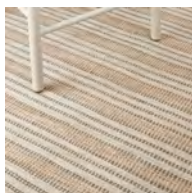
Tolsey plaid rug, Off White
 100% wool
 TOL-RUGP-[]-OF
 170x240cm 625 €
 200x300cm 875 €



Bantham, White Ombre
 100% jute
 BAN-JUTE-RUG-[]-WH
 170x240cm 625 €
 200x300cm 875 €



Fistral rug, Grey
 90% wool, 10% cotton
 FIS-WOOL-RUG-[]-GR
 170x240cm 525 €
 200x300cm 795 €



TUSOCK

These sheepskins are made from the wool of Corriedale sheep, known for its close-cropped curl and soft and tactile handle. Available in two sizes and a choice of off-white Pearl or earthy Brown.

Tussock sheepskin rug, Pearl
 100% natural sheepskin
 TUS-SHE-01/02
 Single 215 €
 Double 410 €



Tussock sheepskin rug, Brown
 100% natural sheepskin
 TUS-SHE-01/02-BRWN
 Single 205 €
 Double 390 €





Baskets

All our baskets are handwoven by skilled artisans in Asia. The natural jute, seagrass and rattan designs offer versatile storage as well as plenty of warmth and texture.



Somerton waste paper basket
Rattan
SOML-BKT-008
28cm x 21cm x 28cm 65 €



Somerton boot room basket
Rattan
SOML-BCH-BKT-63X26
63cm x 26cm x 31cm 130 €



Somerton laundry basket
Rattan
SOML-LAU-BKT
50cm x 44cm x 33cm 175 €



Somerton broom cupboard basket
Rattan
SOML-BRO-BKT
48cm x 26cm x 31cm 135 €



Somerton bathroom storage
Rattan
SOML-BAT-BKT-44X50/44X80
50cm x 44cm x 23cm 90 €
80cm x 44cm x 23cm 160 €



Somerton storage basket
Rattan
SOML-BKT-011/012
43cm x 41cm x 38cm 135 €
52cm x 41cm x 38cm 165 €



Somerton round log basket
Rattan
SOML-BKT-014/013
54cm x 53cm 220 €
67cm x 63cm 260 €



NEW Neptune Boot jack
Natural Oak
NEPT-BOOT-JCK-OK
W: 36cm D: 17cm H: 8cm
70 €



Somerton under console basket
Rattan
SOML-BKT-006/005/004
46cm x 28cm x 28cm 95 €
63cm x 28cm x 28cm 95 €
86cm x 28cm x 28cm 130 €



Somerton under bed storage
Rattan
SOML-BED-BKT-70X65/85X70
70cm x 65cm x 16cm 155 €
85cm x 70cm x 14cm 180 €



Somerton rectangular basket
Rattan
SOML-BKT-018/017
40cm x 30cm x 28cm 95 €
60cm x 45cm x 35cm 145 €



Somerton log basket
Rattan
SOML-BKT-016/015
79cm x 49cm x 49cm 290 €
90cm x 60cm x 60cm 320 €



Ashcroft pot

Silver Reed rattan
ASC-POT-09X09-WH

9cm x 10cm 16 €

**Ashcroft lidded box**

Silver Reed rattan
ASC-BOX-[]-WH

17cm x 17cm x 18cm 47 €

30cm x 17cm x 18cm 80 €

**Ashcroft tissue box cover**

Silver Reed rattan
ASC-BOX-[]-WH

14cm x 14cm 39 €

25cm x 13cm x 6cm 39 €

**Ashcroft box tray**

Silver Reed rattan
ASC-BTRA-[]-WH

27cm x 21cm x 9cm 43 €

35cm x 26cm x 12cm 65 €

43cm x 31cm x 15cm 115 €

**Ashcroft magazine basket**

Silver Reed rattan
ASC-MAG-28X50-WH

50cm x 28cm x 36cm 195 €

**Ashcroft utility basket**

Silver Reed rattan
ASC-UTIL-50X44-WH

50cm x 44cm x 33cm 290 €

**Ashcroft soft basket**

Silver Reed rattan
ASC-BKT-[]-WH

40cm x 32cm x 19cm 95 €

51cm x 43cm x 21cm 135 €

**Ashcroft umbrella basket**

Silver Reed rattan
ASC-UMB-22X22-WH

22cm x 56cm 130 €

**Ashcroft waste paper basket**

Silver Reed rattan
ASC-PBKT-25X31-WH

25cm x 25cm x 31cm 75 €

**Ashcroft lidded bin**

Silver Reed rattan
ASC-BIN-30X30-WH

30cm x 34cm 120 €

**Ashcroft pedal bin**

Silver Reed rattan
ASC-PED-BIN-WH

22cm x 30cm 175 €

**Ashcroft laundry basket**

Silver Reed rattan
ASC-LBKT-RND-40X67-WH

40cm x 67cm 265 €



Arbroath basket, small
Hand-woven jute
ARB-BKT-01
W: 26cm D: 20cm H: 28cm
33 €



Arbroath basket, medium
Hand-woven jute
ARB-BKT-02
W: 31cm D: 23cm H: 31cm
43 €



Arbroath basket, large
Hand-woven jute
ARB-BKT-03
W: 36cm D: 26cm H: 34cm
55 €



Arbroath laundry basket
Hand-woven jute
ARB-LBKT-NA
Dia: 40cm H: 62cm
75 €



Littleton oval basket
Rattan with removable zinc liner
LIT-BKT-003
W: 40cm D: 30cm H: 15cm
135 €



Littleton rectangular basket
Rattan with removable zinc liner
LIT-BKT-002
W: 45cm D: 23cm H: 15cm
135 €



Littleton round basket
Rattan with removable zinc liner
LIT-BKT-004
Dia: 34cm H: 17cm
90 €



Littleton square basket
Rattan with removable zinc liner
LIT-BKT-001
W: 30cm D: 30cm H: 15cm
115 €



Alva baskets, set of three
Natural
ALV-BKT-03
Dia: 30.5cm H: 19.5cm
Dia: 25.5cm H: 16cm
Dia: 20.5cm H: 14cm
33 €



Crombie basket, square
CRB-SQU-BKT
W: 12cm D: 12cm H: 14cm
20 €



Crombie basket, rectangular
CRB-REC-BKT
W: 30cm D: 12cm H: 12cm
26 €



Redford basket, small
Natural
RED-BKT-01
Dia: 35cm H: 40cm
60 €



Redford basket, medium
Natural
RED-BKT-02
Dia: 40cm H: 46cm
90 €



Redford basket, large
Natural
RED-BKT-03
Dia: 45cm H: 51cm
95 €



Wall art

Wall art is one of the simplest ways to decorate your home. Curate a unique gallery wall by combining limited edition prints and abstract sketches.



Landscape & architecture prints

NEW Golden Summer evening
at Burnham Overy Staithe
GOL-SUM-EVE-PRI

W: 63cm H: 73cm D: 3cm

550 €



NEW Late afternoon light,
West Wittering beach
LATE-AFT-LI-PRI

W: 63cm H: 73cm D: 3cm

550 €



NEW Summer morning Cloud-
scape, Brancaster Beach
SUM-MOR-CLDS-PRI

W: 68cm H: 68cm D: 3cm

550 €



NEW Late summer evening,
view from Glastonbury Tor
LATE-SUM-EVE-PRI

W: 68cm H: 68cm D: 3cm

550 €



Caledonia - Tentsmuir Beach,
Afternoon Light
CLD-PRI-TEN-BEA

W: 75cm H: 65cm D: 3cm

280 €



Paper art

NEW Kemsley paper wall art -
Square

KEM-PAP-PRI-01

W: 4.5cm H: 50cm D: 50cm

165 €



Overton paper wall art I
OVE-PAP-PRI-01

W: 60cm H: 120cm D: 6cm

330 €



Overton paper wall art II
OVE-PAP-PRI-02

W: 120cm H: 120cm D: 6cm

775 €



Abstract prints

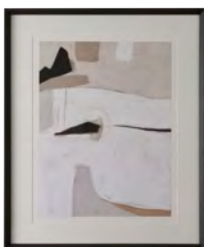
NEW Abstract scene in Navy
ABS-ART-NY
W: 64cm H: 79cm D: 5cm
465 €



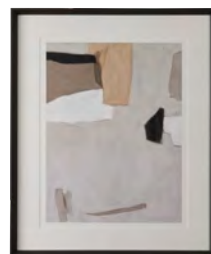
NEW Abstract scene in Olive
ABS-ART-OL
W: 64cm H: 79cm D: 5cm
465 €



Abstract scene
in Potter's Pink I
ABS-ART-PP1
W: 70cm H: 84cm D: 4cm
425 €



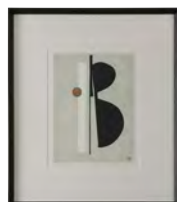
Abstract scene
in Potters Pink II
ABS-ART-PP2
W: 70cm H: 84cm D: 4cm
425 €



Abstract scene
in Burnham Red I
ABS-ART-RED1
W: 64cm H: 74cm D: 4cm
360 €



Abstract scene
in Burnham Red II
ABS-ART-RED2
W: 64cm H: 74cm D: 4cm
360 €



Radiance I
RAD-PRI-01
W: 84cm H: 84cm D: 5cm
625 €



Radiance II
RAD-PRI-02
W: 84cm H: 84cm D: 5cm
625 €



Circle I
CIR-PRI-01
W: 53cm H: 53cm D: 3cm
195 €



Circle II
CIR-PRI-02
W: 53cm H: 53cm D: 3cm
195 €



Ink III
INK-PRI-03
W: 33cm H: 38cm D: 3cm
130 €



Ink IV
INK-PRI-04
W: 33cm H: 38cm D: 3cm
130 €



Affinity I
AFF-PRI-01
W: 80cm H: 80cm D: 3cm
390 €



Affinity II
AFF-PRI-02
W: 80cm H: 80cm D: 3cm
390 €



Affinity III
AFF-PRI-03
W: 96cm H: 96cm D: 3cm
525 €



Affinity IV
AFF-PRI-04
W: 97cm H: 97cm D: 3cm
525 €



Deeper I
DEP-PRI-01
W: 83cm H: 83cm D: 3cm
395 €



Deeper II
DEP-PRI-02
W: 83cm H: 83cm D: 3cm
395 €



Botanical & organic prints

Clipsham - Acanthus Spinolus
CLI-PRI-05
W: 51cm H: 61cm D: 3cm
210 €



Clipsham - Canna Indica Rubra
CLI-PRI-07
W: 51cm H: 61cm D: 3cm
210 €



Clipsham - Aethiopis
CLI-PRI-06
W: 51cm H: 61cm D: 3cm
210 €



Clipsham - Cinera Cum Flora
CLI-PRI-08
W: 51cm H: 61cm D: 3cm
210 €



Whitechapel - East Indian
Strychnos 1
WHI-PRI-01
W: 79cm H: 109cm D: 3cm
485 €



Whitechapel - East Indian
Strychnos 2
WHI-PRI-02
W: 79cm H: 109cm D: 3cm
485 €



Illustrative & fine art prints

Marylebone - Branston Square
MAB-PRI-BRY
W: 59cm H: 48cm D: 2cm
165 €



Marylebone - Wyndham Street
MAB-PRI-WYN
W: 59cm H: 48cm D: 2cm
165 €



Illustrative & fine art prints

Still Life Vase I

STL-PRI-VAS-01

W: 55cm H: 63cm D: 4cm

245 €



Still Life Vase II

STL-PRI-VAS-02

W: 55cm H: 63cm D: 4cm

245 €



Still Life Vase III

STL-PRI-VAS-03

W: 55cm H: 63cm D: 4cm

245 €



Still Life Vase IV

STL-PRI-VAS-04

W: 55cm H: 63cm D: 4cm

245 €



Sketch, Seated I

SKE-SEA-01

W: 45cm H: 40cm D: 3cm

165 €



Sketch, Seated III

SKE-SEA-03

W: 45cm H: 40cm D: 3cm

165 €



Sketch, Seated V

SKE-SEA-05

W: 86cm H: 120cm D: 5cm

595 €



Sketch, Dancer I

SKE-DAN-01

W: 57cm H: 79cm D: 3cm

285 €



Sketch, Dancer II

SKE-DAN-02

W: 57cm H: 79cm D: 3cm

285 €



Buckland print ledges

These subtle ledges let you rearrange your artwork displays anytime you wish. Each is crafted from solid timber with profiled sides to keep items in position.

Natural Oak

BUC-LED-1000/1500/2200

1m W: 100cm D: 7cm H: 4cm 130 €

1.5m W: 150cm D: 7cm H: 4cm 195 €

2.5m W: 220cm D: 7cm H: 4cm 260 €

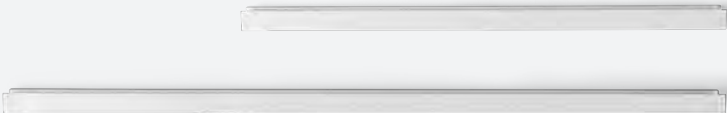


Salt

BUC-LED-1000/1500-ST

1m W: 100cm D: 7cm H: 4cm 115 €

1.5m W: 150cm D: 7cm H: 4cm 130 €





Mirrors & clocks

Mirrors and clocks may feel like essentials, but they should be decorative too. Elevate the ordinary with timber and antiqued metal designs.



PAINTED MIRRORS

Mirrors housed in painted solid wood frames. Choose between lightly distressed finishes and customisable designs.

Chichester rectangular mirror

Shell

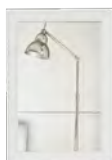
CHI-MIR-[]-HE

W: 56cm H: 82cm D: 7cm 470 €

W: 56cm H: 154cm D: 7cm 675 €

W: 82cm H: 124cm D: 7cm 695 €

W: 100cm H: 154cm D: 7cm 975 €

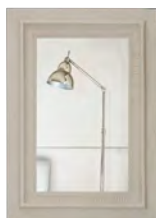


Lavenham rectangular mirror

Driftwood

LAV-MIR-02-DR

W: 80cm H: 115cm D: 7cm 550 €



Bembridge rectangular mirror

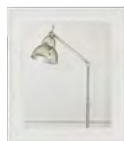
Shell

BEM-MIR-[]-HE

W: 56cm H: 66cm D: 4cm 165 €

W: 67cm H: 79cm D: 4cm 220 €

W: 56cm H: 154cm D: 4cm 350 €



Buckingham round mirror

Off White

BUC-RND/MIR-[]-OF

Dia: 59cm D: 5cm 245 €

Dia: 74cm D: 6cm 315 €

Dia: 99cm D: 6cm 495 €



Buckingham rectangular mirror

Off White

BUC-REC-[]-OF

W: 56cm H: 82cm D: 5cm 315 €

W: 82cm H: 124cm D: 6cm 525 €

W: 120cm H: 205cm D: 6cm 925 €



METAL MIRRORS

Introduce sophisticated texture to a room with our metal-framed mirrors. Choose between blackened steel and vintage-style gilt designs in a wide range of sizes.

Carter rectangular mirror

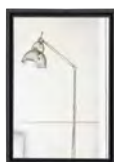
Blackened Steel

CAR-MIR-[]

W: 59cm H: 84cm D: 4cm 575 €

W: 104cm H: 158cm D: 4cm 995 €

W: 84cm H: 194cm D: 4cm 975 €



Fleming round mirror

Gilt Gold

FLE-MIR-02-GD

Dia: 89cm D: 3cm 390 €



Fleming rectangular mirror

Gilt Gold

FLE-MIR-REC-124-GD

W: 82cm H: 124cm D: 4cm 650 €



TIMBER MIRRORS

These mirrors are made from strong solid oak, with simple moulded frames that celebrate traditional materials and craft.

Edinburgh round mirror

Vintage Oak

EDI-MIR-[]-VO

Dia: 67cm D: 5cm 675 €

Dia: 96cm D: 5cm 1,150 €



CLOCKS

The Harrison clock is equally at home in classic and contemporary settings, with a moulded frame and classic dial. Choose between painted tulipwood and warm solid oak.



Harrison wall clock
Seasoned Oak
HAR-WCLO-0435-IS
Dia: 44cm D: 5cm



195 €

Index

- A** Abbotsbury 173
Acorn 239
Albertine 143
Aldwych 43, 139
Alex 33
Alva 265
Amberley 225
Amble 217
Arbroath 265
Architectural lighting 200
Ardingly 71, 114
Armchairs 24
Arran 259
Artificial flowers 244
Arthur 32
Arundel 42, 78, 99
Ashbourne 240
Ashcroft 232, 240, 264
Athena 182, 191, 196, 204
Audley 27
Audrey 27
- B** Bailey 257
Balmoral 84
Bamburgh 154
Bantham 260
Barbury 171
Bar stools 88
Baskets 262
Bath & body 155
Bathroom accessories 154
Battersea 77
Beds 124
Bedroom furniture 138
Bed linen 143
Belmont 233
Bembridge 275
Benches 99, 102
Bethnal 234
Blankets 256
Blanket box 35
Blyton 215
Bookcases 51
Borough 80, 89, 117
Bowsley 230
Bramley 227
Branscombe 173
Broadfield 217, 233
Brompton 185, 187, 206
- Bronte 213
Broseley 219
Browning 199
Brunswick 193, 207
Buckingham 275
Buckland 68, 102, 272
Buxton 174
- C** Calan 259
Calie 144
Candles & diffusers 210
Carnaby 240
Carter 276
Carradale 259
Casey 26
Caspian 180
Cecile 195, 203
Ceiling lights 194
Chairs 88
Chalford 39
Charlecote 118
Charlie 134
Chawton 53
Chesil 173
Chichester 43, 51, 67, 72, 106, 121, 126, 140, 148
Chillham 173
Clemmie 133
Cleo 25
Clocks 277
Clovelly 229
Coasters 240
Coat racks 66
Coates 201
Coffee tables 36
Coniston 44
Console tables 36
Cranbrook 174
Crockery 224
Crombie 265
Cromer 257
Cushions 250
Cutlery 243
- D** Dalston 181
Dartmouth 207
Dawes 183
Delphi 179
Denton 257
Desks 70
- Dewsbury 137
Dining chairs 88
Dining tables 76
Dora 247
Dressers 105
Dressing tables 140
Drinks trolley 44
Dune 180
- E** Edinburgh 40, 68, 101, 152
Elgin 260
Elle 143
Ella 237
Eliza 15
Eloise 34
Embleton 217
Emerson 198
Emily 239
Etta 143
Eva 18
- F** **Fabric** 165
Farlow 105, 117
Fermoie 169
Fife 239
Fistral 260
Fleming 276
Floating shelf 68
Floella 216
Floor lamps 186
Flooring 170
Flowers 244
Footstools 30
Francis 129
Freestanding kitchen 117
Frome 37, 47, 139
- G** George 19
Glassware 234
Gosse 222
Greenwich 237
- H** Handsworth 243
Hanover 184, 187, 197 206
Harrison 277
Harrogate 86
Havana 94
Haybrook 219
Headboards 132
Hebden 71
Heddon 217
- Henley 35, 41, 51, 63, 110
Henry 193
Hepworth 174
Hetton 257
Hickstead 222
Highgate 185, 188
Holborn 110
Home office 70
Hot water bottle 145
Housekeepers cupboard 140
Hoxton 237
- I** Ice bucket 234
Iona 193
Islington 220, 234
IsoGuard® 162
- J** James 192
Jarrow 151
- K** Keats 199, 205
Kenilworth 92
Kennet 172
Keswick 44
Kitchen freestanding 117
- L** Laith 259
Lamps 178
Lampshades 190
Lana 233
Larsson 73, 128, 141
Lavenham 275
Lavington 219
Leven 219
Lewes 233
Life-like flowers 244
Lighting 177
Littleton 265
Longford 260
Long Island 17, 32
Lottie 18
Lucile 192
Ludlow 101
Lydford 234
Lynton 64
- M** Mabel 240
Madeleine 28
Madelena 144
Maeve 239
Malborough 222, 231

- Malpas 215, 219
 Malton 181, 197
 Marina 179, 196, 204
 Marlow 259
 Marton 174
 Mason 183
 Matilda 28
 Matlock 222
Mattresses 136
Media cabinets 62
 Melbury 226
 Meldon 172
 Miller 98
 Milo 33
Mirrors 64, 274
 Molland 231
 Montague 95
 Montpellier 223
 Mowbray 98
 Myla 143
- N** **Napkin rings 240**
 Neptune 239
 Newington 220
 Nightingale 214
 Northwich 121
- O** **Objets 222**
Occasional chairs 24
Occasional tables 36
 Oliver 191
 Olivia 21, 134
 Ophelia 31
 Orford 232, 243
Organisation 232
 Orissa 253
 Otterburn 257
Ottoman 34
Outdoor cushions 253
- P** **Paint 159**
 Pembroke 59
Pendant lights 194
Photo frames 223
Pictures & prints 266
 Pimlico 237
Placemats 240
 Porter 223
 Portobello 48
Pots & vases 219
 Potterne 219
 Primrose 237
 Print ledge 272
 Prints 266
- Q** Quinn 239
- R** Raynes 220
 Redford 265
 Richmond 220
 Riley 257
 Rona 259
Rugs 258
 Rupert 31
- S** Salcombe 243
 Savernake 175
Scatter cushions 250
Scented candles 211
 Seaton 173
 Sennen 228
 Serena 220
Serveware 225
Shades 290
 Shaftesbury 198, 205
Sheepskins 251
 Sheldrake 85
 Shepton 113
 Shoreditch 23, 97
Side tables 36
 Soane 201
Sofas 14
 Solara 216
 Somerton 263
 Sonning 259
 Stools 121
Storage 104
Storage box 35
 Stratford 81
 Stratton 121
 Stuart 243
 Sudbury 257
 Suffolk 67, 87, 93, 109, 118
 Sunbury 113
 Suthfield 217, 222
- T** **Table lamps 178**
Table linen 239
Tables 76
 Tamworth 173
 Taplow 259
- Taps 154**
 Tedbury 173
 Terence 232
 Thaxted 243
 Theo 29
 Thornbury 39
Throws 256
 Tilda 143
 Tilbury 89
Tiles & wall coverings 170
 Tolsey 260
 Tussock 145, 251, 260
TV cabinets 62
- U** **Upholstery 14**
- V** **Vases 219**
 Verwood 219
- W** **Wall art 266**
Wall coverings 170
Wall lights 203
 Walter 26
 Walton 125
 Wardley 69, 90, 130
Washstands 148
 Wilcot 171
 Wingfield 233
Workstations 72
 Wycombe 29, 42, 83, 91, 100

Help, it's always at hand

No matter how small or large your query, it's easy to get in touch with us.

In store

You'll find our knowledgeable store teams throughout Ireland and Europe, but if you can't pop in, know that they're still here to help. You can find your nearest by turning to the back cover, or by heading online. neptune.com/our-stores

Alternatively if we don't have a store in your country please email our international team international@neptune.com and we will try to connect you with an international partner or stockist who can support with your order.

Online

Our website is the easiest and quickest way to explore all our designs in depth. It's also where you can read our 'Inspiration' journal full of ideas and advice, and where you can talk to us using our live chat feature (available Monday–Friday 9am–5:45pm, Saturday 9am–5.30pm and Sunday 10am–4pm). at neptune.com

Some good things to know

For more details on our returns policy, delivery service, guarantees and pricing, visit neptune.com.

Our guarantees

We guarantee our accessories and parasols for one year. We guarantee Neptune manufactured sinks and taps, garden furniture and mattresses for five years. This excludes any thirdparty suppliers. When it comes to upholstered furniture – sofas, armchairs, footstools, ottomans, headboards, and dining chairs – we guarantee the fabric and cushion inners for three years, and the frame for a lifetime. And for our furniture and kitchens (when fitted by one of our accredited installers), we build these to last a lifetime, so that's how long we guarantee them for.

Neptune, Blagrove, Swindon, Wiltshire SN5 8YG
+44 (0) 1793 427300 info@neptune.com neptune.com

© COPYRIGHT NEPTUNE (EUROPE) LTD 2025.

To make sure that everything's as accurate as possible, we triple check our directory before it makes its way to you. But, very occasionally, something might slip through. If you do spot anything amiss, just let us know and we'll get it changed as soon as we can. We're very sorry if any mistakes mean that your piece isn't quite what you expected, or if it turns out that the price is wrong. You can absolutely still cancel or return your order – just head to neptune.com/pages/delivery-returns for all the details on how to do that. And, just so you know, all the prices in our directory are the RRP.

E&OE

GERMANY

Neptune Berlin +49 (0)30 32766972

Neptune Fellbach +49 (0)711 95794970

Neptune Tegernsee +49 (0)8022 7057384

Neptune by Helma Interior

Heidelberg +49 (0) 6221 401740

Neptune by Faszination

Oschatz +49 9 03435/90340

FRANCE

Neptune Paris +33 (0)1 40 28 90 56

Neptune Paris Ouest

+33 (0)1 40 28 90 56

Neptune by Fabrica

Eymet +33 (0)5 53 24 70 19qww

Neptune by Beaumont

Trélissac +33 (0)5 53 04 35 04

Neptune by Just Kitchens

Miélan +33 (0)5 62 58 03 64

Neptune by Sierra Home

Samoens 74340 +33 6 21 23 24 10

AUSTRIA

Neptune by Steinwender

Wien +43 (0)1 533 33 02

BELGIUM

Neptune by O&V Home Interiors

Seneffe +32 (0) 475 55 69 33

ITALY

Neptune by Adi Arredamenti

Brescia +39 030 216 7152

Neptune by Forteshire

Forte dei Marmi +39 0584 876 254

THE NETHERLANDS

Neptune by The Classic House

Weteringbrug (near Schiphol)

+31 (0)71 7113251

LIECHTENSTEIN

Neptune by Allure

Vaduz +423 (0)370 1367

SWITZERLAND

Neptune by Styles Interiors

Mont-sur-Rolle +41 21 826 05 70

Neptune by Friolet Interiors

Zurich +41 43 268 52 00

We do everything we can to make sure our directory is as environmentally sound as possible. The paper is FSC-certified as coming from responsible sources, and is carbon balanced by the World Land Trust. It's then printed in the UK by Pureprint, a CarbonNeutral® company where everything, from their buildings to their processes, is managed in an environmentally-friendly way (if you'd like to get technical, they're ISO 14001 certified).



